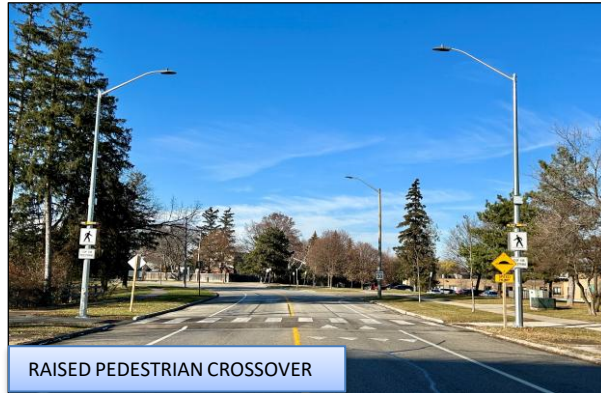
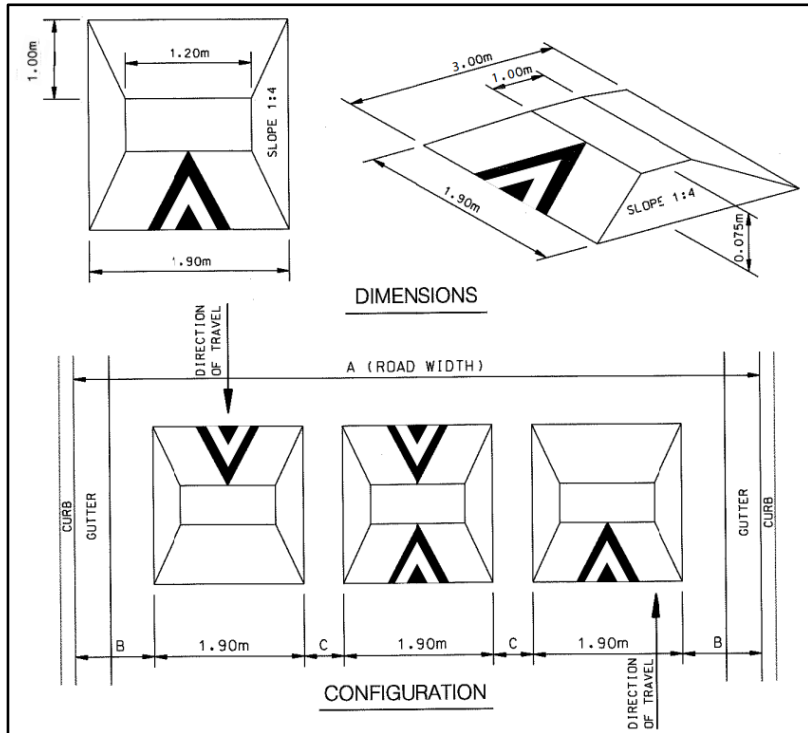


# TRAFFIC CALMING DEVICES



# SPEED CUSHION DESIGN



- Raised area on a roadway that does not cover the entire width of the road
- Designed to accommodate wide wheel base of emergency vehicles (easy passage)
- Designed to discourage drivers from travelling at excessive speeds
- A series of speed cushions is more effective than a single installation
- Use on neighbourhood roads

# LOYALIST DRIVE

Between Unity Drive and Orleans Road



Existing Traffic Signal Locations



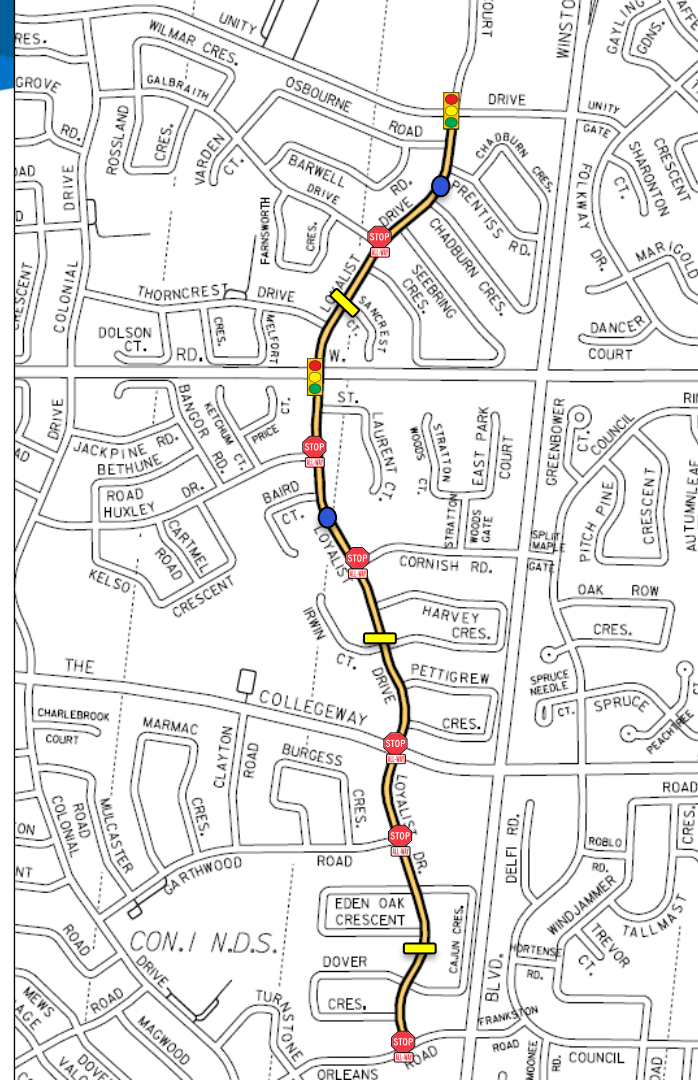
Existing All-Way Stop Locations



Proposed Speed Cushion Locations

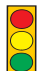



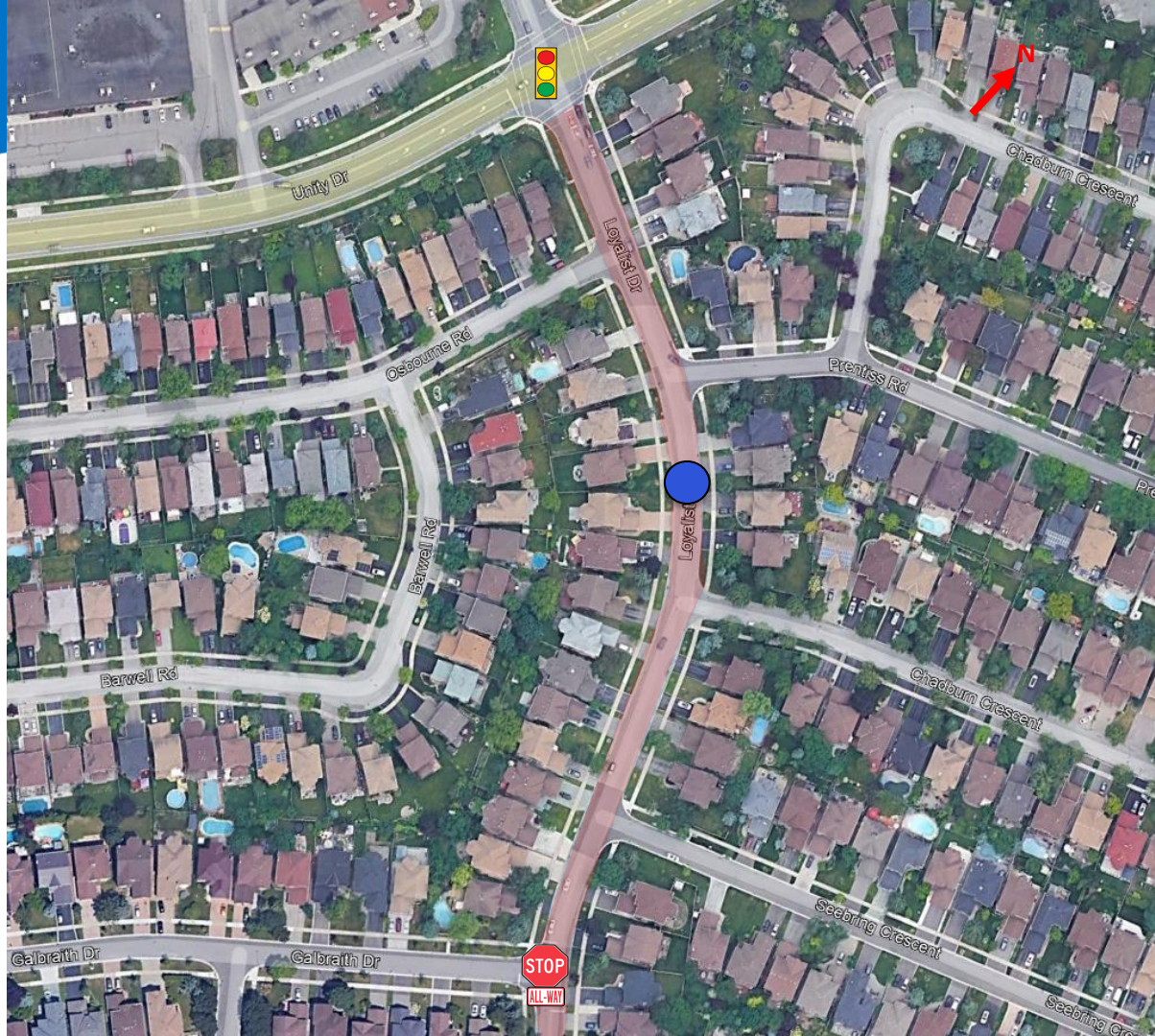
Proposed Flexible Bollard Locations



# LOYALIST DRIVE

Between Unity Drive and Galbraith Drive

-  Existing Traffic Signal Location
-  Existing All-Way Stop Location
-  Proposed Flexible Bollard Location
-  Proposed Pavement Marking (yellow centre line)



# LOYALIST DRIVE

Between Galbraith Drive and  
Burnhamthorpe Road W



Existing Traffic Signal  
Location



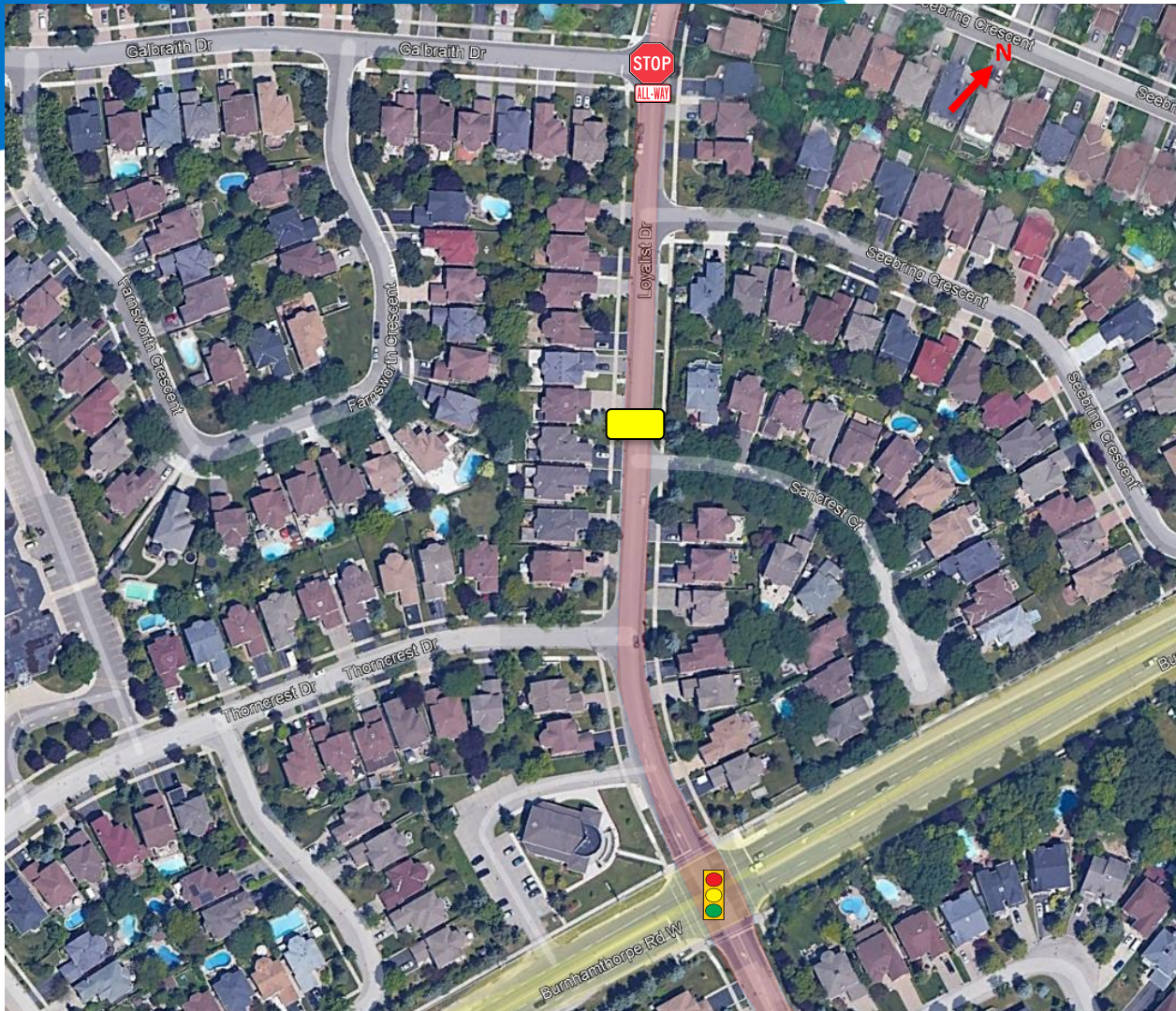
Existing All-Way  
Stop Location



Proposed Speed  
Cushion Location



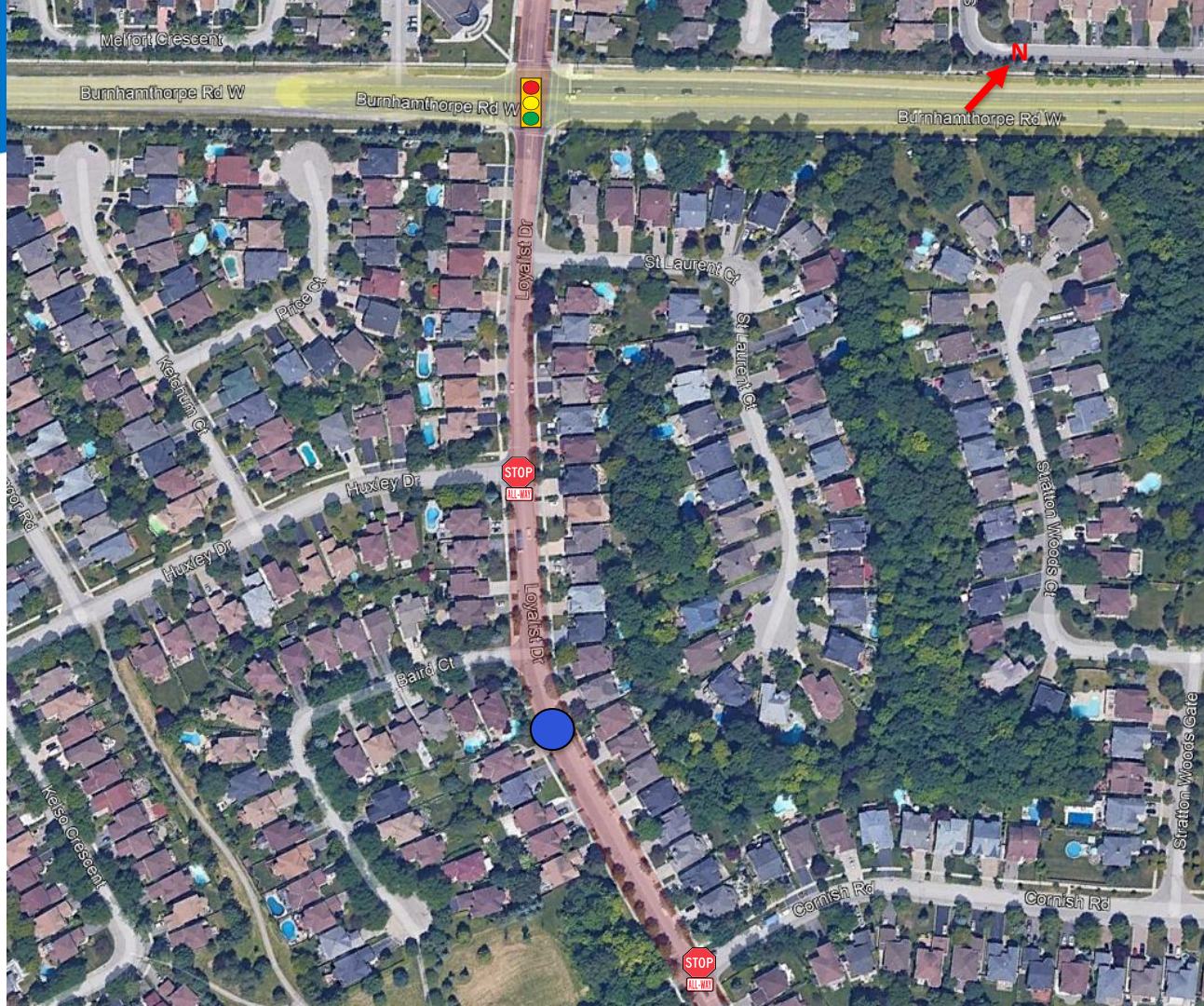
Proposed Pavement  
Marking (yellow centre line)



# LOYALIST DRIVE

Between Burnhamthorpe Road W  
and Cornish Road

-  Existing Traffic Signal Location
-  Existing All-Way Stop Locations
-  Proposed Flexible Bollard Location
-  Proposed Pavement Marking (yellow centre line)



# LOYALIST DRIVE

Between Cornish Road and The Collegeway



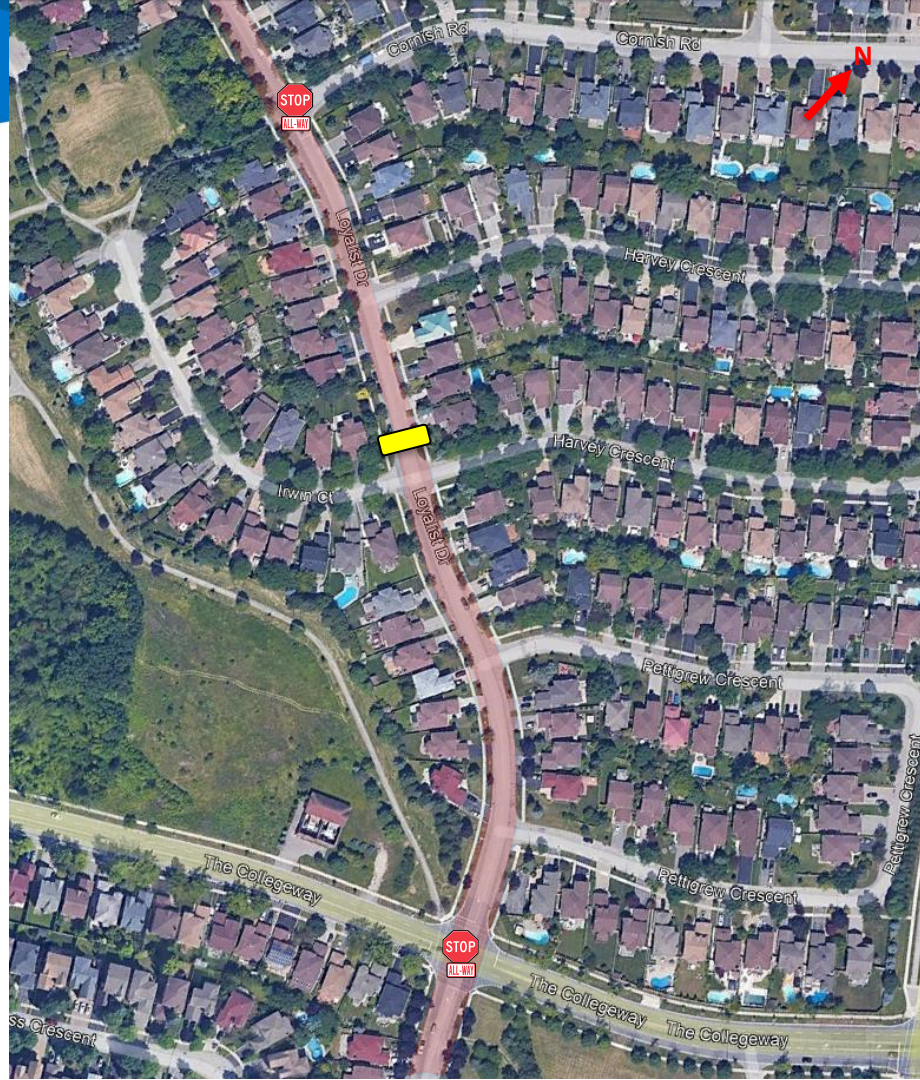
Existing All-Way  
Stop Locations



Proposed Speed  
Cushion Location



Proposed Pavement  
Marking (yellow centre line)



# LOYALIST DRIVE

Between The Collegeway and  
Orleans Road



Existing All-Way  
Stop Locations



Proposed Speed  
Cushion Location



Proposed Pavement  
Marking (yellow centre line)

