

**1315 BOUGH BEECHES BOULEVARD**

MISSISSAUGA, ON L4W 4A1

**Project Number**  
25-141

**Client**  
1315 BOUGH BEECHES LTD  
2700 DUFFERIN ST., UNIT 50  
TORONTO, ON M6B 4J3

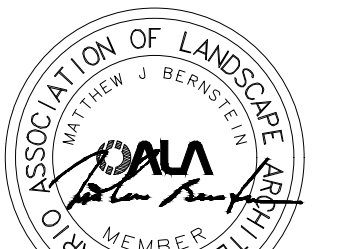
**Consultant**

ARCADIS  
55 ST. CLAIR AVENUE WEST,  
TORONTO, ON M4V 2Y7  
TEL: 416.596.1930  
FABIAN PAPA & PARTNERS  
3901 HIGHWAY 7, SUITE 500  
VAUGHAN, ON L4L 8L5  
TEL: 905.264.2420  
WIND ASSOCIATES LTD.  
47 ROSELAWN AVENUE  
TORONTO, ON M4R 1E5  
TEL: 416.968.3511

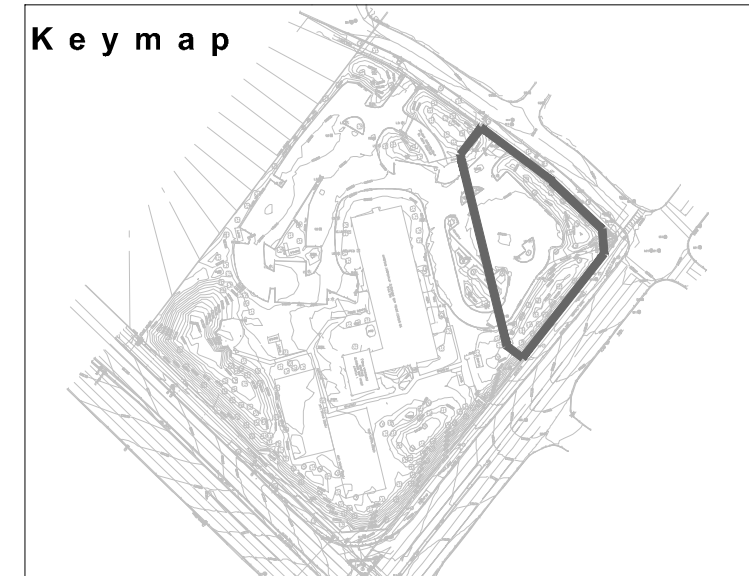
**Revisions**

1	ISSUED FOR OPA ZBA SUBMISSION 1	2026-03-13	LTC
#	ISSUED FOR XXX	YYYY-MM-DD	BY

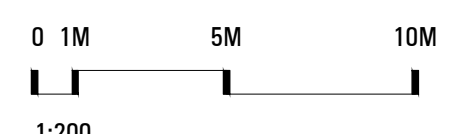
**Stamp**



**Key map**



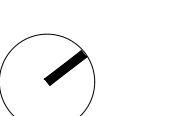
**Scale**



**Phase**

OPA / ZBA PHASE

**North**



**Drawing Name**

PUBLIC UTILITY PLAN

**Sheet Number**

NOT FOR CONSTRUCTION

**LU.101**

**LEGEND**

- PROPERTY LINE
- UNDERGROUND PARKING EXTENT
- PEDESTRIAN CONCRETE PAVING
- PEDESTRIAN UNIT PAVING A
- PEDESTRIAN UNIT PAVING B
- VEHICULAR UNIT PAVING A
- RUBBERIZED SURFACE
- SOD
- K9 ARTIFICIAL TURF
- ASPHALT
- LINE OF SOIL AREA ZONE
- BIKE RACKS
- EXISTING TREE TO REMAIN REFER TO ARBORIST REPORT AND TYP
- TREE PROTECTION FENCE REFER TO ARBORIST REPORT AND TYP
- SEATWALL BENCH
- OUTDOOR AMENITY FURNITURE
- FENCING AND SCREENS
- PEDESTRIAN LIGHT BOLLARD WITH DARK SKY COMPLIANT LUMINAIRE
- PEDESTRIAN LIGHT COLUMN WITH DARK SKY COMPLIANT FIXTURE

**NOTES**

- REFER TO ARBORIST REPORT FOR THE DETAILS ON THE EXISTING TREES TO REMOVE AND THE EXISTING TREES TO REMAIN

**PEDESTRIAN UNIT PAVING TYPE A PERMACON - BOULEVARD TLI**  
 SIZE: 120x240x80MM  
 FINISH: SMOOTH  
 COLOR: 75% LIGHT GREY SMOOTH, 25% LIGHT CHARCOAL SMOOTH  
 LAYING PATTERN: RUNNING BOND

**PEDESTRIAN UNIT PAVING TYPE B UNILOCK - TRIVIA**  
 SIZE: 190x260x60MM  
 FINISH: SMOOTH  
 COLOR: STORM  
 LAYING PATTERN: STACK BOUND

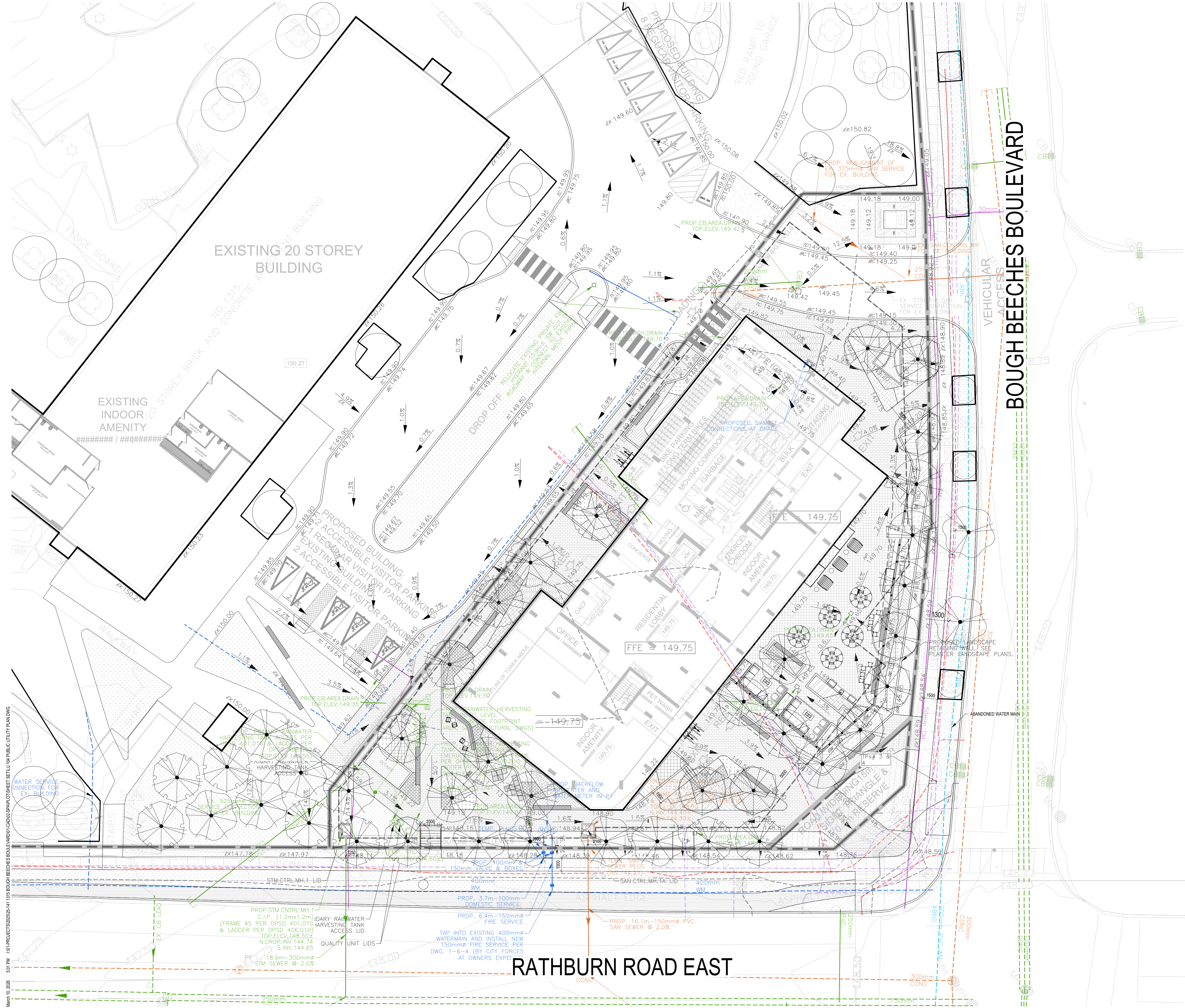
**VEHICULAR UNIT PAVING A UNILOCK - PROMENADE**  
 SIZE: 190x300x100MM  
 FINISH: SMOOTH  
 COLOR: OPAL BLEND  
 LAYING PATTERN: HERRINGBONE

**UTILITIES LEGEND**

- SEWER SYSTEM
- STORM WATER SYSTEM
- WATER MAIN
- ABANDONED WATER MAIN
- GAS MAIN
- HYDRO
- TELECOM
- TEST PITS LOCATIONS REFER TO QLA INVESTIGATION

**NOTES**

- UTILITIES AND SERVICES CONFIRMED BY QLA REPORT PREPARED ON 2026-01-29 BY PLANVIEW UTILITY SERVICES LTD., A CHUDRAMOORTHY. REFER TO QLA REPORT
- ALL UTILITY AND SERVING REFER TO CIVIL ENGINEER DRAWINGS



March 10, 2026 5:07 PM I:\01-PROJECTS\2025\141-1315 BOUGH BEECHES BOULEVARD\01-CADD\3D\SPARC\01SHEET SET\104 PUBLIC UTILITY PLAN.DWG