

1315 BOUGH BEECHES BOULEVARD

MISSISSAUGA, ON L4W 4A1

Project Number
25-141

Client
1315 BOUGH BEACHES LTD
2700 DUFFERIN ST., UNIT 50
TORONTO, ON M6B 4J3

Consultant

ARCADIS
55 ST. CLAIR AVENUE WEST,
TORONTO, ON M4V 2Y7
TEL: 416.596.1930
FABIAN PAPA & PARTNERS
3901 HIGHWAY 7, SUITE 500
VAUGHAN, ON L4L 8L5
TEL: 905.264.2420
WIND ASSOCIATES LTD.
47 ROSELAWN AVENUE
TORONTO, ON M4R 1E5
TEL: 416.968.3511

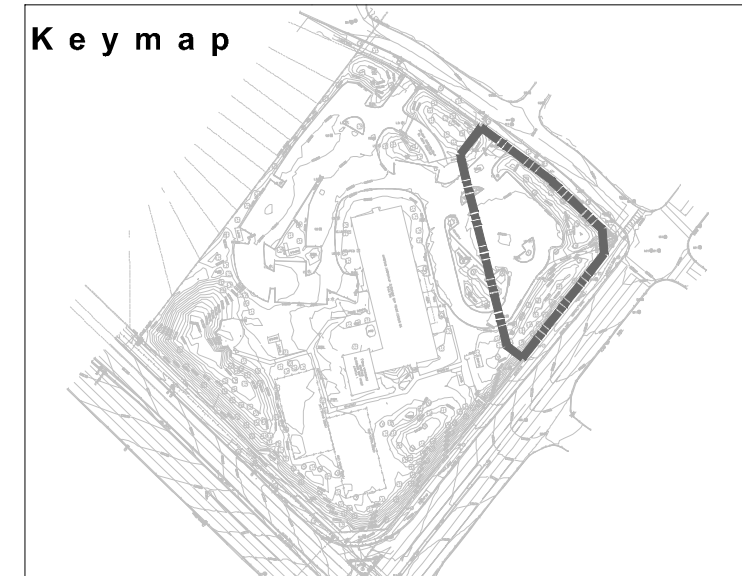
Revisions

1	ISSUED FOR OPA ZBA SUBMISSION 1	2026-03-13	LTC
#	ISSUED FOR XXX	YYYY-MM-DD	BY

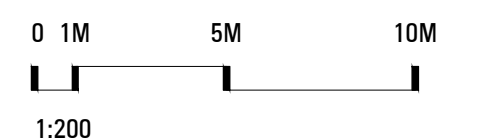
Stamp



Key map



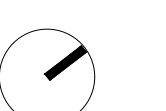
Scale



Phase

OPA / ZBA PHASE

North



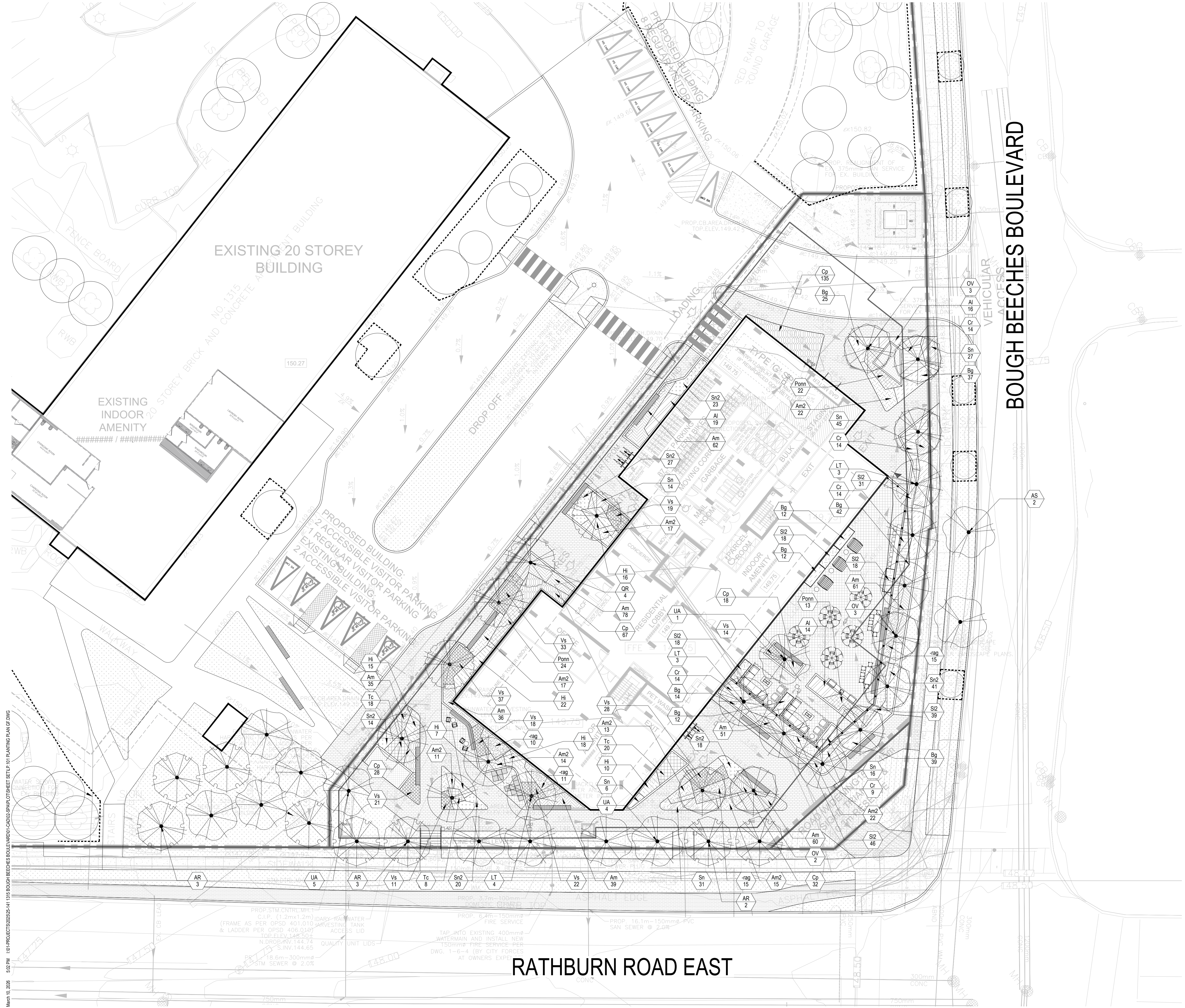
Drawing Name

PLANTING PLAN GF

Sheet Number

NOT FOR CONSTRUCTION

LP.101



LEGEND

- PROPERTY LINE
- UNDERGROUND PARKING EXTENT
- PEDESTRIAN CONCRETE PAVING
- PEDESTRIAN UNIT PAVING A
- PEDESTRIAN UNIT PAVING B
- VEHICULAR UNIT PAVING A
- RUBBERIZED SURFACE
- SOD
- K9 ARTIFICIAL TURF
- ASPHALT
- LINE OF SOIL AREA ZONE
- BIKE RACKS
- EXISTING TREE TO REMAIN REFER TO ARBORIST REPORT AND TYP
- TREE PROTECTION FENCE REFER TO ARBORIST REPORT AND TYP
- SEATWALL BENCH
- OUTDOOR AMENITY FURNITURE
- FENCING AND SCREENS
- PEDESTRIAN LIGHT BOLLARD WITH DARK SKY COMPLIANT LUMINAIRE
- PEDESTRIAN LIGHT COLUMN WITH DARK SKY COMPLIANT FIXTURE

NOTES

1. REFER TO ARBORIST REPORT FOR THE DETAILS ON THE EXISTING TREES TO REMOVE AND THE EXISTING TREES TO REMAIN

PEDESTRIAN UNIT PAVING TYPE A PERMACON - BOULEVARD TLI
 SIZE: 120x240x80MM
 FINISH: SMOOTH
 COLOR: 75% LIGHT GREY SMOOTH, 25% LIGHT CHARCOAL SMOOTH
 LAYING PATTERN: RUNNING BOND

PEDESTRIAN UNIT PAVING TYPE B UNILOCK - TRIVIA
 SIZE: 190x280x60MM
 FINISH: SMOOTH
 COLOR: STORM
 LAYING PATTERN: STACK BOUND

VEHICULAR UNIT PAVING A UNILOCK - PROMENADE
 SIZE: 100x300x100MM
 FINISH: SMOOTH
 COLOR: OPAL BLEND
 LAYING PATTERN: HERRINGBONE

March 10, 2026 5:02 PM I:\01-PROJECTS\2025-141\1315 BOUGH BEECHES BOULEVARD\01-CADD\3-SPRINT\01-SHEET SET\101 PLANTING PLAN OF DWG