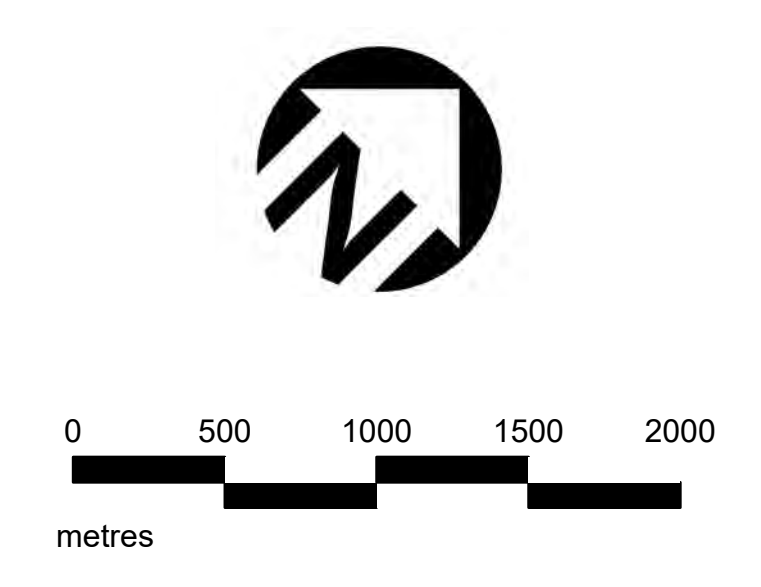


Schedule 7 Land Use Designations



LAND USE DESIGNATIONS

 Residential Low-Rise I	 Office
 Residential Low-Rise II	 Business Employment
 Residential Mid-Rise	 Industrial
 Residential High-Rise	 Airport
 Mixed Use	 Institutional
 Mixed Use Limited	 Public Open Space
 Downtown Mixed Use	 Private Open Space
 Downtown Core Mixed Use	 Greenlands
 Convenience Commercial	 Parkway Belt West
 Motor Vehicle Commercial	 Utility
 Mixed Employment	

BASE MAP INFORMATION

 Heritage Conservation District
 1996 NEP/2000 NEF Composite Noise Contours
 LBPIA Operating Area Boundary See Aircraft Noise Policies
 Area Exception from LBPIA Operating Area
 Natural Hazards

STRATEGIC GROWTH AREAS

 Downtown Core
 Growth Centre
 Growth Node
 Employment Area
 Lakeview Innovation Corridor Employment Area
 Special Policy Area
 Special Purpose Area

- Notes:**
1. Major Transit Station Areas are shown on Schedule 8 and Schedules 8A to 8R.
 2. The limits of the Natural Hazards shown on this schedule are for illustrative purposes only. The appropriate Conservation Authority should be consulted to determine their actual location.
 3. Base map information (e.g. roads, highways, railways, watercourses), including any lands or bodies of water outside the city boundaries, is shown for information purposes only.
 4. Roads shown on this schedule are existing or under construction and are shown for information purposes only. For future roads refer to Schedule 3, Long Term Street Network.

MISSISSAUGA OFFICIAL PLAN

Schedule 7 Land Use Designations



LAND USE DESIGNATIONS

Residential Low-Rise I	Office
Residential Low-Rise II	Business Employment
Residential Mid-Rise	Industrial
Residential High-Rise	Airport
Mixed Use	Institutional
Mixed Use Limited	Public Open Space
Downtown Mixed Use	Private Open Space
Downtown Core Mixed Use	Greenlands
Convenience Commercial	Parkway Belt West
Motor Vehicle Commercial	Utility
Mixed Employment	

STRATEGIC GROWTH AREAS

Downtown Core	Employment Area
Growth Centre	Lakeview Employment Corridor Employment Area
Growth Node	Special Policy Area
	Special Purpose Area

BASE MAP INFORMATION

Heritage Conservation District	Area Exception from LBPIA Operating Area
1996 NEP/2000 NEF Composite Noise Contours	Natural Hazards
LBPIA Operating Area Boundary	See Aircraft Noise Policies

Notes:

1. Major Transit Station Areas are shown on Schedule 8 and Schedules 8A to 8R.
2. The limits of the Natural Hazards shown on this schedule are for illustrative purposes only. The appropriate Conservation Authority should be consulted to determine their actual location.
3. Base map information (e.g. roads, highways, railways, watercourses), including any lands or bodies of water outside the city boundaries, is shown for information purposes only.
4. Roads shown on this schedule are existing or under construction and are shown for information purposes only. For future roads refer to Schedule 3, Long Term Street Network.

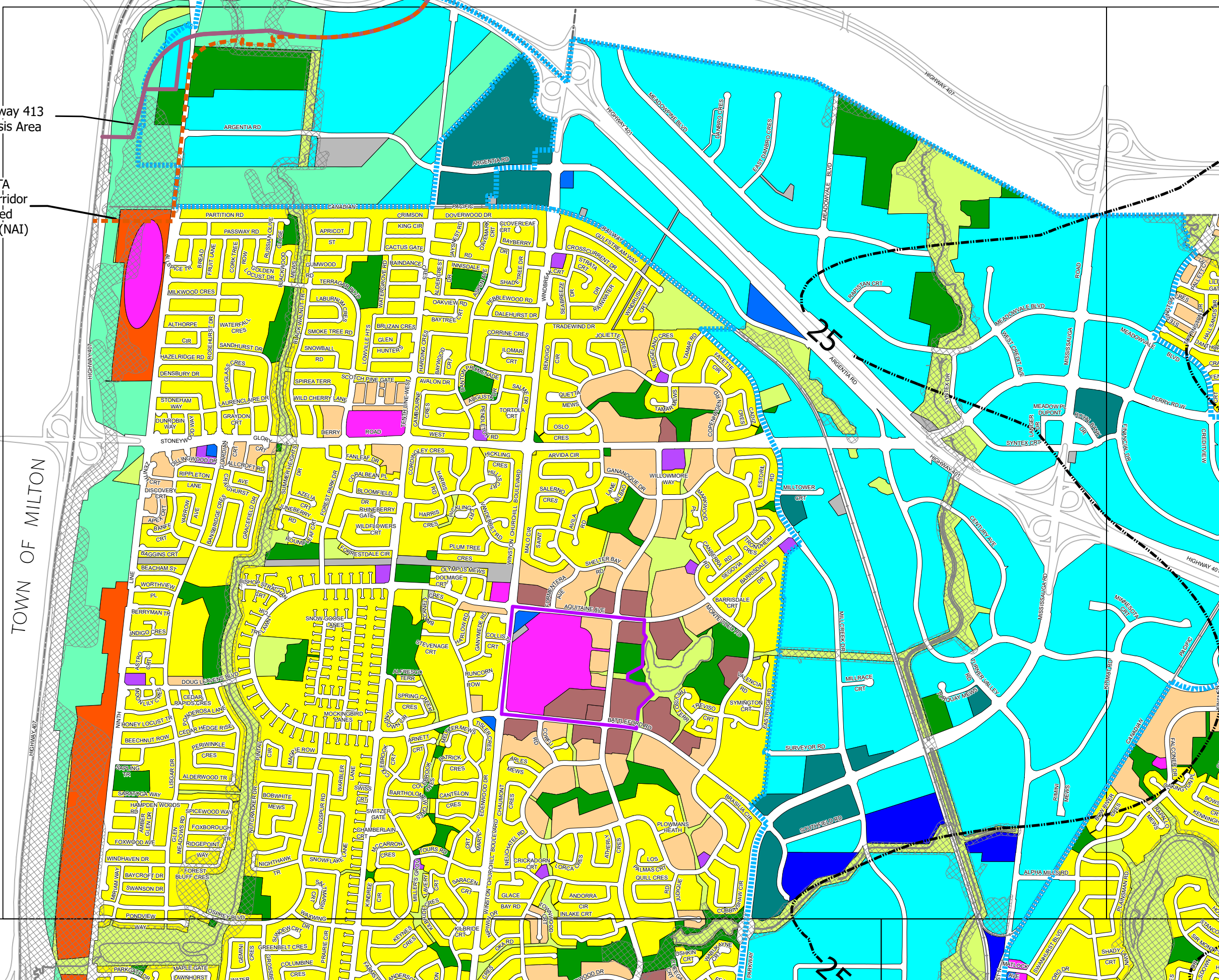


Proposed Highway 413 Focused Analysis Area

Northwest GTA Transmission Corridor Study Narrowed Area of Interest (NAI)

TOWN OF MILTON

TOWN OF HALTON HILLS



MISSISSAUGA OFFICIAL PLAN

Schedule 7 Land Use Designations



LAND USE DESIGNATIONS

Residential Low-Rise I	Office
Residential Low-Rise II	Business Employment
Residential Mid-Rise	Industrial
Residential High-Rise	Airport
Mixed Use	Institutional
Mixed Use Limited	Public Open Space
Downtown Mixed Use	Private Open Space
Downtown Core Mixed Use	Greenlands
Convenience Commercial	Parkway Belt West
Motor Vehicle Commercial	Utility
Mixed Employment	

STRATEGIC GROWTH AREAS

Downtown Core	Employment Area
Growth Centre	Lakeview Innovation Corridor Employment Area
Growth Node	Special Policy Area
	Special Purpose Area

BASE MAP INFORMATION

Heritage Conservation District	Area Exception from LBPIA Operating Area
1996 NEP/2000 NEF Composite Noise Contours	Natural Hazards
LBPIA Operating Area Boundary	See Aircraft Noise Policies

Notes:

- Major Transit Station Areas are shown on Schedule 8 and Schedules 8A to 8R.
- The limits of the Natural Hazards shown on this schedule are for illustrative purposes only. The appropriate Conservation Authority should be consulted to determine their actual location.
- Base map information (e.g. roads, highways, railways, watercourses), including any lands or bodies of water outside the city boundaries, is shown for information purposes only.
- Roads shown on this schedule are existing or under construction and are shown for information purposes only. For future roads refer to Schedule 3, Long Term Street Network.



MISSISSAUGA OFFICIAL PLAN

Schedule 7 Land Use Designations



LAND USE DESIGNATIONS

Residential Low-Rise I	Office
Residential Low-Rise II	Business Employment
Residential Mid-Rise	Industrial
Residential High-Rise	Airport
Mixed Use	Institutional
Mixed Use Limited	Public Open Space
Downtown Mixed Use	Private Open Space
Downtown Core Mixed Use	Greenlands
Convenience Commercial	Parkway Belt West
Motor Vehicle Commercial	Utility
Mixed Employment	

STRATEGIC GROWTH AREAS

Downtown Core	Employment Area
Growth Centre	Lakeview Innovation Corridor Employment Area
Growth Node	Special Policy Area
	Special Purpose Area

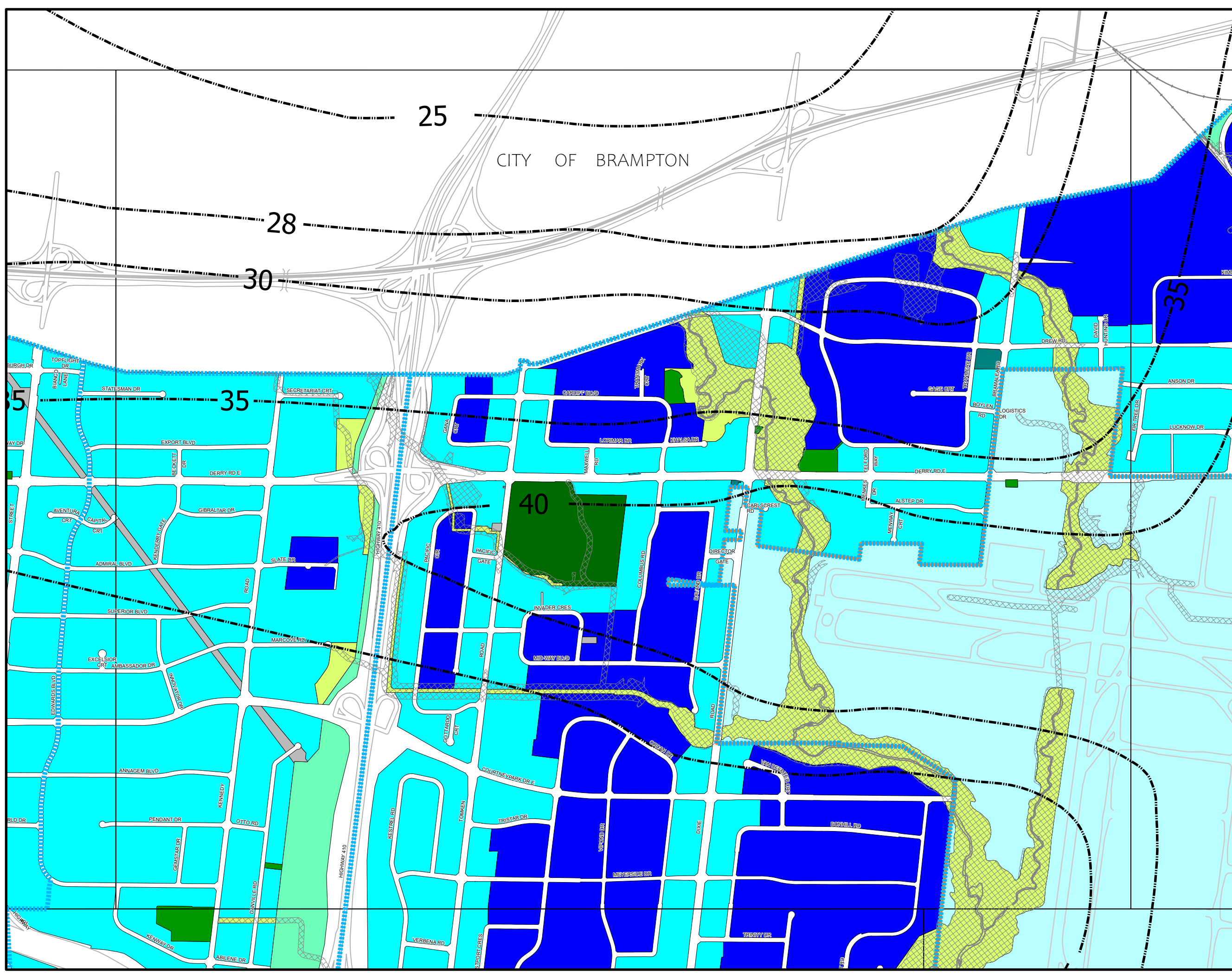
BASE MAP INFORMATION

Heritage Conservation District	Area Exception from LBPIA Operating Area
1996 NEP/2000 NEF Composite Noise Contours	Natural Hazards
LBPIA Operating Area Boundary	

See Aircraft Noise Policies

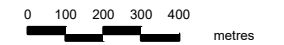
Notes:

1. Major Transit Station Areas are shown on Schedule 8 and Schedules 8A to 8R.
2. The limits of the Natural Hazards shown on this schedule are for illustrative purposes only. The appropriate Conservation Authority should be consulted to determine their actual location.
3. Base map information (e.g. roads, highways, railways, watercourses), including any lands or bodies of water outside the city boundaries, is shown for information purposes only.
4. Roads shown on this schedule are existing or under construction and are shown for information purposes only. For future roads refer to Schedule 3, Long Term Street Network.



MISSISSAUGA OFFICIAL PLAN

Schedule 7 Land Use Designations



LAND USE DESIGNATIONS

Residential Low-Rise I	Office
Residential Low-Rise II	Business Employment
Residential Mid-Rise	Industrial
Residential High-Rise	Airport
Mixed Use	Institutional
Mixed Use Limited	Public Open Space
Downtown Mixed Use	Private Open Space
Downtown Core Mixed Use	Greenlands
Convenience Commercial	Parkway Belt West
Motor Vehicle Commercial	Utility
Mixed Employment	

STRATEGIC GROWTH AREAS

Downtown Core	Employment Area
Growth Centre	Lakeview Innovation Corridor Employment Area
Growth Node	Special Policy Area
Special Purpose Area	

BASE MAP INFORMATION

Heritage Conservation District	Area Exception from LBPIA Operating Area
1996 NEP/2000 NEF Composite Noise Contours	Natural Hazards
LBPIA Operating Area Boundary	
	See Aircraft Noise Policies

Notes:

1. Major Transit Station Areas are shown on Schedule 8 and Schedules 8A to 8R.
2. The limits of the Natural Hazards shown on this schedule are for illustrative purposes only. The appropriate Conservation Authority should be consulted to determine their actual location.
3. Base map information (e.g. roads, highways, railways, watercourses), including any lands or bodies of water outside the city boundaries, is shown for information purposes only.
4. Roads shown on this schedule are existing or under construction and are shown for information purposes only. For future roads refer to Schedule 3, Long Term Street Network.



MISSISSAUGA OFFICIAL PLAN

Schedule 7 Land Use Designations



LAND USE DESIGNATIONS

	Residential Low-Rise I		Office
	Residential Low-Rise II		Business Employment
	Residential Mid-Rise		Industrial
	Residential High-Rise		Airport
	Mixed Use		Institutional
	Mixed Use Limited		Public Open Space
	Downtown Mixed Use		Private Open Space
	Downtown Core Mixed Use		Greenlands
	Convenience Commercial		Parkway Belt West
	Motor Vehicle Commercial		Utility
	Mixed Employment		

STRATEGIC GROWTH AREAS

	Downtown Core		Employment Area
	Growth Centre		Lakeview Employment Area
	Growth Node		Corridor Employment Area
			Special Policy Area
			Special Purpose Area

BASE MAP INFORMATION

	Heritage Conservation District		Area Exception from LBPIA Operating Area
	1996 NEP/2000 NEF Composite Noise Contours		Natural Hazards
	LBPIA Operating Area Boundary		
	See Aircraft Noise Policies		

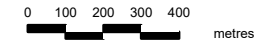
Notes:

- Major Transit Station Areas are shown on Schedule 8 and Schedules 8A to 8R.
- The limits of the Natural Hazards shown on this schedule are for illustrative purposes only. The appropriate Conservation Authority should be consulted to determine their actual location.
- Base map information (e.g. roads, highways, railways, watercourses), including any lands or bodies of water outside the city boundaries, is shown for information purposes only.
- Roads shown on this schedule are existing or under construction and are shown for information purposes only. For future roads refer to Schedule 3, Long Term Street Network.



MISSISSAUGA OFFICIAL PLAN

Schedule 7 Land Use Designations



LAND USE DESIGNATIONS

- | | |
|--------------------------|---------------------|
| Residential Low-Rise I | Office |
| Residential Low-Rise II | Business Employment |
| Residential Mid-Rise | Industrial |
| Residential High-Rise | Airport |
| Mixed Use | Institutional |
| Mixed Use Limited | Public Open Space |
| Downtown Mixed Use | Private Open Space |
| Downtown Core Mixed Use | Greenlands |
| Convenience Commercial | Parkway Belt West |
| Motor Vehicle Commercial | Utility |
| Mixed Employment | |

STRATEGIC GROWTH AREAS

- | | |
|---------------|--|
| Downtown Core | Employment Area |
| Growth Centre | Lakeview Innovation Corridor Employment Area |
| Growth Node | Special Policy Area |
| | Special Purpose Area |

BASE MAP INFORMATION

- | | |
|--|--|
| Heritage Conservation District | Area Exception from LBPIA Operating Area |
| 1996 NEP/2000 NEF Composite Noise Contours | Natural Hazards |
| LBPIA Operating Area Boundary | |
- See Aircraft Noise Policies

Notes:

1. Major Transit Station Areas are shown on Schedule 8 and Schedules 8A to 8R.
2. The limits of the Natural Hazards shown on this schedule are for illustrative purposes only. The appropriate Conservation Authority should be consulted to determine their actual location.
3. Base map information (e.g. roads, highways, railways, watercourses), including any lands or bodies of water outside the city boundaries, is shown for information purposes only.
4. Roads shown on this schedule are existing or under construction and are shown for information purposes only. For future roads refer to Schedule 3, Long Term Street Network.



MISSISSAUGA OFFICIAL PLAN

Schedule 7 Land Use Designations



LAND USE DESIGNATIONS

Residential Low-Rise I	Business Employment
Residential Low-Rise II	Industrial
Residential Mid-Rise	Airport
Residential High-Rise	Institutional
Mixed Use	Public Open Space
Mixed Use Limited	Private Open Space
Downtown Mixed Use	Greenlands
Convenience Commercial	Parkway Belt West
Motor Vehicle Commercial	Utility
Mixed Employment	

STRATEGIC GROWTH AREAS

Downtown Core	Employment Area
Growth Centre	Lakeview Innovation Corridor Employment Area
Growth Node	Special Policy Area
	Special Purpose Area

BASE MAP INFORMATION

Heritage Conservation District	Area Exception from LBPIA Operating Area
1996 NEP/2000 NEF Composite Noise Contours	Natural Hazards
LBPIA Operating Area Boundary	

See Aircraft Noise Policies

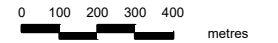
Notes:

1. Major Transit Station Areas are shown on Schedule 8 and Schedules 8A to 8R.
2. The limits of the Natural Hazards shown on this schedule are for illustrative purposes only. The appropriate Conservation Authority should be consulted to determine their actual location.
3. Base map information (e.g. roads, highways, railways, watercourses), including any lands or bodies of water outside the city boundaries, is shown for information purposes only.
4. Roads shown on this schedule are existing or under construction and are shown for information purposes only. For future roads refer to Schedule 3, Long Term Street Network.



MISSISSAUGA OFFICIAL PLAN

Schedule 7 Land Use Designations



LAND USE DESIGNATIONS

Residential Low-Rise I	Office
Residential Low-Rise II	Business Employment
Residential Mid-Rise	Industrial
Residential High-Rise	Airport
Mixed Use	Institutional
Mixed Use Limited	Public Open Space
Downtown Mixed Use	Private Open Space
Downtown Core Mixed Use	Greenlands
Convenience Commercial	Parkway Belt West
Motor Vehicle Commercial	Utility
Mixed Employment	

STRATEGIC GROWTH AREAS

Downtown Core	Employment Area
Growth Centre	Lakeview Innovation Corridor Employment Area
Growth Node	Special Policy Area
	Special Purpose Area

BASE MAP INFORMATION

Heritage Conservation District	Area Exception from LBPIA Operating Area
1996 NEP/2000 NEF Composite Noise Contours	Natural Hazards
LBPIA Operating Area Boundary	See Aircraft Noise Policies

Notes:

1. Major Transit Station Areas are shown on Schedule 8 and Schedules 8A to 8R.
2. The limits of the Natural Hazards shown on this schedule are for illustrative purposes only. The appropriate Conservation Authority should be consulted to determine their actual location.
3. Base map information (e.g. roads, highways, railways, watercourses), including any lands or bodies of water outside the city boundaries, is shown for information purposes only.
4. Roads shown on this schedule are existing or under construction and are shown for information purposes only. For future roads refer to Schedule 3, Long Term Street Network.



MISSISSAUGA OFFICIAL PLAN

Schedule 7 Land Use Designations



LAND USE DESIGNATIONS

Residential Low-Rise I	Office
Residential Low-Rise II	Business Employment
Residential Mid-Rise	Industrial
Residential High-Rise	Airport
Mixed Use	Institutional
Mixed Use Limited	Public Open Space
Downtown Mixed Use	Private Open Space
Downtown Core Mixed Use	Greenlands
Convenience Commercial	Parkway Belt West
Motor Vehicle Commercial	Utility
Mixed Employment	

STRATEGIC GROWTH AREAS

Downtown Core	Employment Area
Growth Centre	Lakeview Innovation Corridor Employment Area
Growth Node	Special Policy Area
	Special Purpose Area

BASE MAP INFORMATION

Heritage Conservation District	Area Exception from LBPIA Operating Area
1996 NEP/2000 NEF Composite Noise Contours	Natural Hazards
LBPIA Operating Area Boundary	

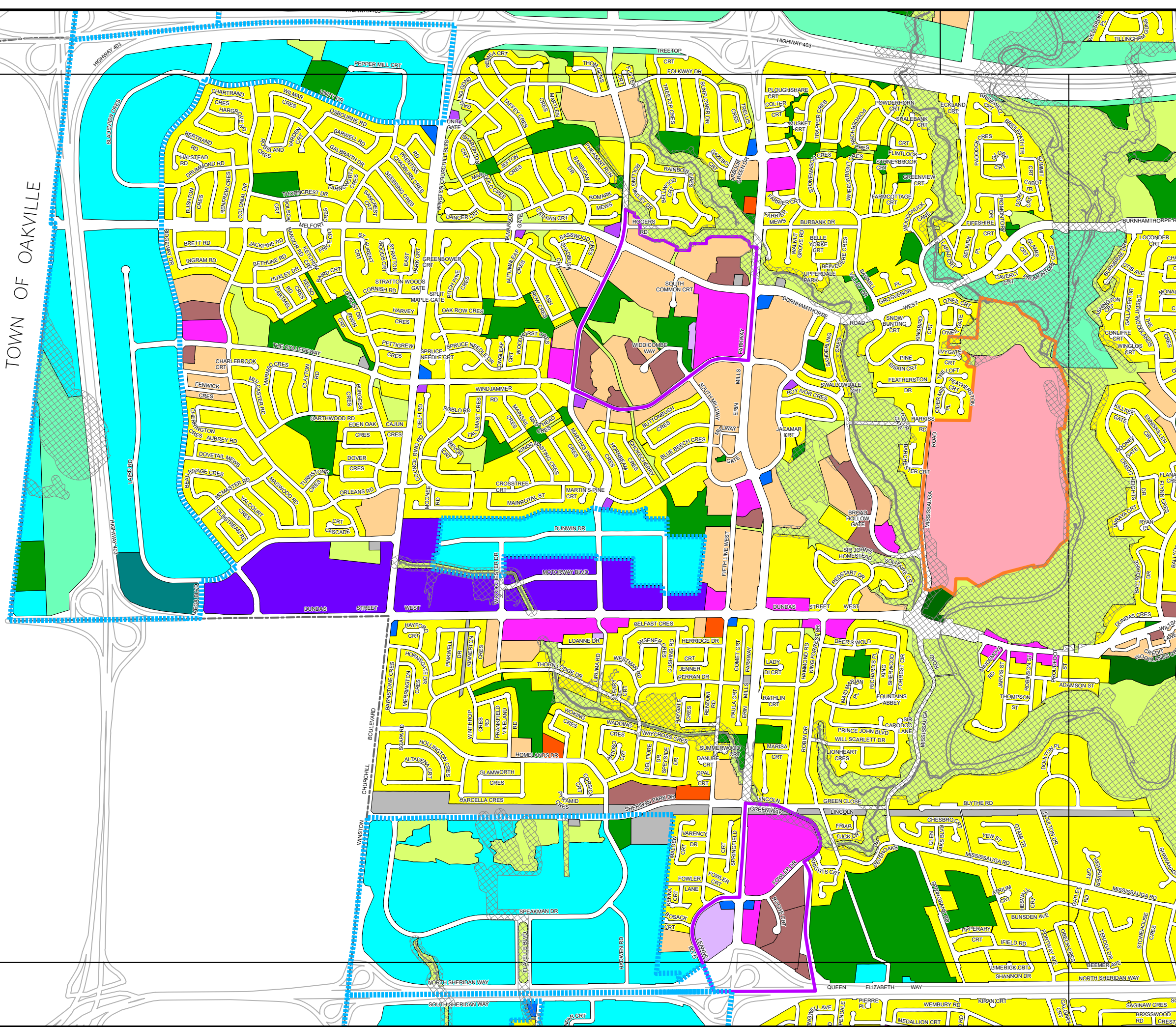
See Aircraft Noise Policies

Notes:

1. Major Transit Station Areas are shown on Schedule 8 and Schedules 8A to 8R.
2. The limits of the Natural Hazards shown on this schedule are for illustrative purposes only. The appropriate Conservation Authority should be consulted to determine their actual location.
3. Base map information (e.g. roads, highways, railways, watercourses), including any lands or bodies of water outside the city boundaries, is shown for information purposes only.
4. Roads shown on this schedule are existing or under construction and are shown for information purposes only. For future roads refer to Schedule 3, Long Term Street Network.



TOWN OF OAKVILLE



MISSISSAUGA OFFICIAL PLAN

Schedule 7 Land Use Designations



LAND USE DESIGNATIONS

- | | |
|--------------------------|---------------------|
| Residential Low-Rise I | Office |
| Residential Low-Rise II | Business Employment |
| Residential Mid-Rise | Industrial |
| Residential High-Rise | Airport |
| Mixed Use | Institutional |
| Mixed Use Limited | Public Open Space |
| Downtown Mixed Use | Private Open Space |
| Downtown Core Mixed Use | Greenlands |
| Convenience Commercial | Parkway Belt West |
| Motor Vehicle Commercial | Utility |
| Mixed Employment | |

STRATEGIC GROWTH AREAS

- | | |
|---------------------|--------------------------|
| Downtown Core | Employment Area |
| Growth Centre | Lakeview Employment Area |
| Growth Node | Corridor Employment Area |
| Special Policy Area | Special Purpose Area |

BASE MAP INFORMATION

- | | |
|--|--|
| Heritage Conservation District | Area Exception from LBPIA Operating Area |
| 1996 NEP/2000 NEF Composite Noise Contours | Natural Hazards |
| LBPIA Operating Area Boundary | |
- See Aircraft Noise Policies

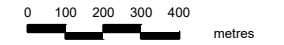
Notes:

- Major Transit Station Areas are shown on Schedule 8 and Schedules 8A to 8R.
- The limits of the Natural Hazards shown on this schedule are for illustrative purposes only. The appropriate Conservation Authority should be consulted to determine their actual location.
- Base map information (e.g. roads, highways, railways, watercourses), including any lands or bodies of water outside the city boundaries, is shown for information purposes only.
- Roads shown on this schedule are existing or under construction and are shown for information purposes only. For future roads refer to Schedule 3, Long Term Street Network.



MISSISSAUGA OFFICIAL PLAN

Schedule 7 Land Use Designations



LAND USE DESIGNATIONS

- | | |
|--------------------------|---------------------|
| Residential Low-Rise I | Office |
| Residential Low-Rise II | Business Employment |
| Residential Mid-Rise | Industrial |
| Residential High-Rise | Airport |
| Mixed Use | Institutional |
| Mixed Use Limited | Public Open Space |
| Downtown Mixed Use | Private Open Space |
| Downtown Core Mixed Use | Greenlands |
| Convenience Commercial | Parkway Belt West |
| Motor Vehicle Commercial | Utility |
| Mixed Employment | |

STRATEGIC GROWTH AREAS

- | | |
|---------------|--|
| Downtown Core | Employment Area |
| Growth Centre | Lakeview Innovation Corridor Employment Area |
| Growth Node | Special Policy Area |
| | Special Purpose Area |

BASE MAP INFORMATION

- | | |
|--|--|
| Heritage Conservation District | Area Exception from LBPIA Operating Area |
| 1996 NEP/2000 NEF Composite Noise Contours | Natural Hazards |
| LBPIA Operating Area Boundary | |
| | See Aircraft Noise Policies |

Notes:

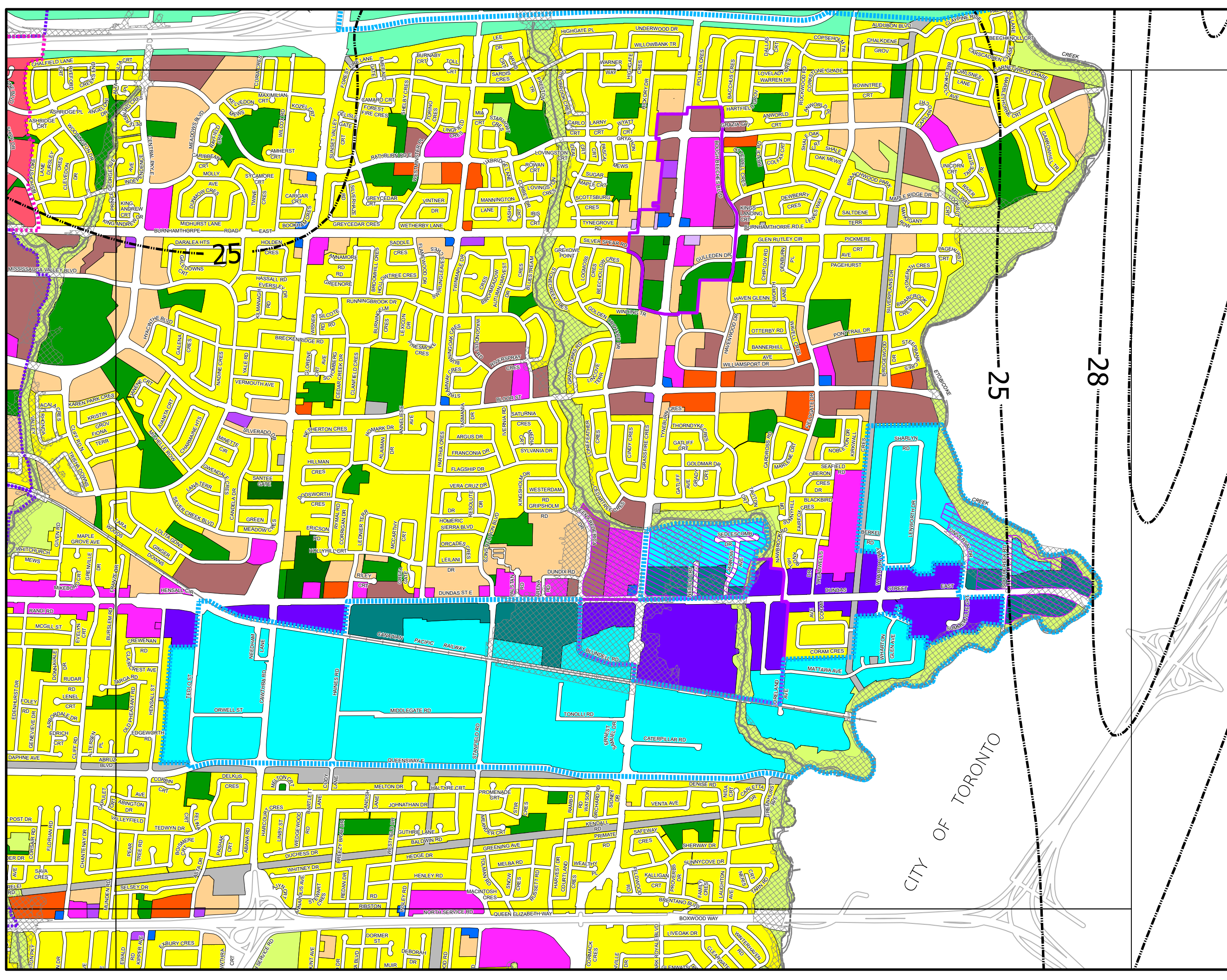
- Major Transit Station Areas are shown on Schedule 8 and Schedules 8A to 8R.
- The limits of the Natural Hazards shown on this schedule are for illustrative purposes only. The appropriate Conservation Authority should be consulted to determine their actual location.
- Base map information (e.g. roads, highways, railways, watercourses), including any lands or bodies of water outside the city boundaries, is shown for information purposes only.
- Roads shown on this schedule are existing or under construction and are shown for information purposes only. For future roads refer to Schedule 3, Long Term Street Network.



7K



March 2026



MISSISSAUGA OFFICIAL PLAN

Schedule 7 Land Use Designations



LAND USE DESIGNATIONS

Residential Low-Rise I	Office
Residential Low-Rise II	Business Employment
Residential Mid-Rise	Industrial
Residential High-Rise	Airport
Mixed Use	Institutional
Mixed Use Limited	Public Open Space
Downtown Mixed Use	Private Open Space
Downtown Core Mixed Use	Greenlands
Convenience Commercial	Parkway Belt West
Motor Vehicle Commercial	Utility
Mixed Employment	

STRATEGIC GROWTH AREAS

Downtown Core	Employment Area
Growth Centre	Lakeview Innovation Corridor Employment Area
Growth Node	Special Policy Area
	Special Purpose Area

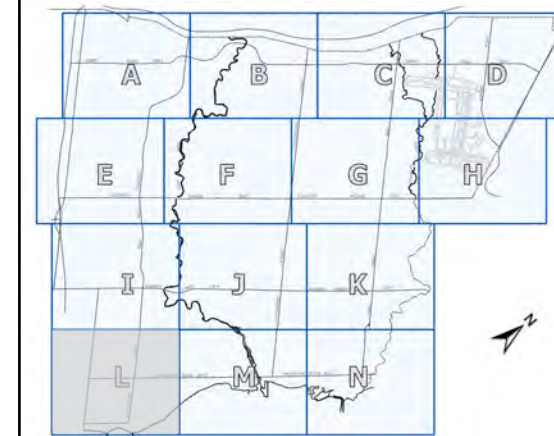
BASE MAP INFORMATION

Heritage Conservation District	Area Exception from LBPIA Operating Area
1996 NEP/2000 NEF Composite Noise Contours	Natural Hazards
LBPIA Operating Area Boundary	

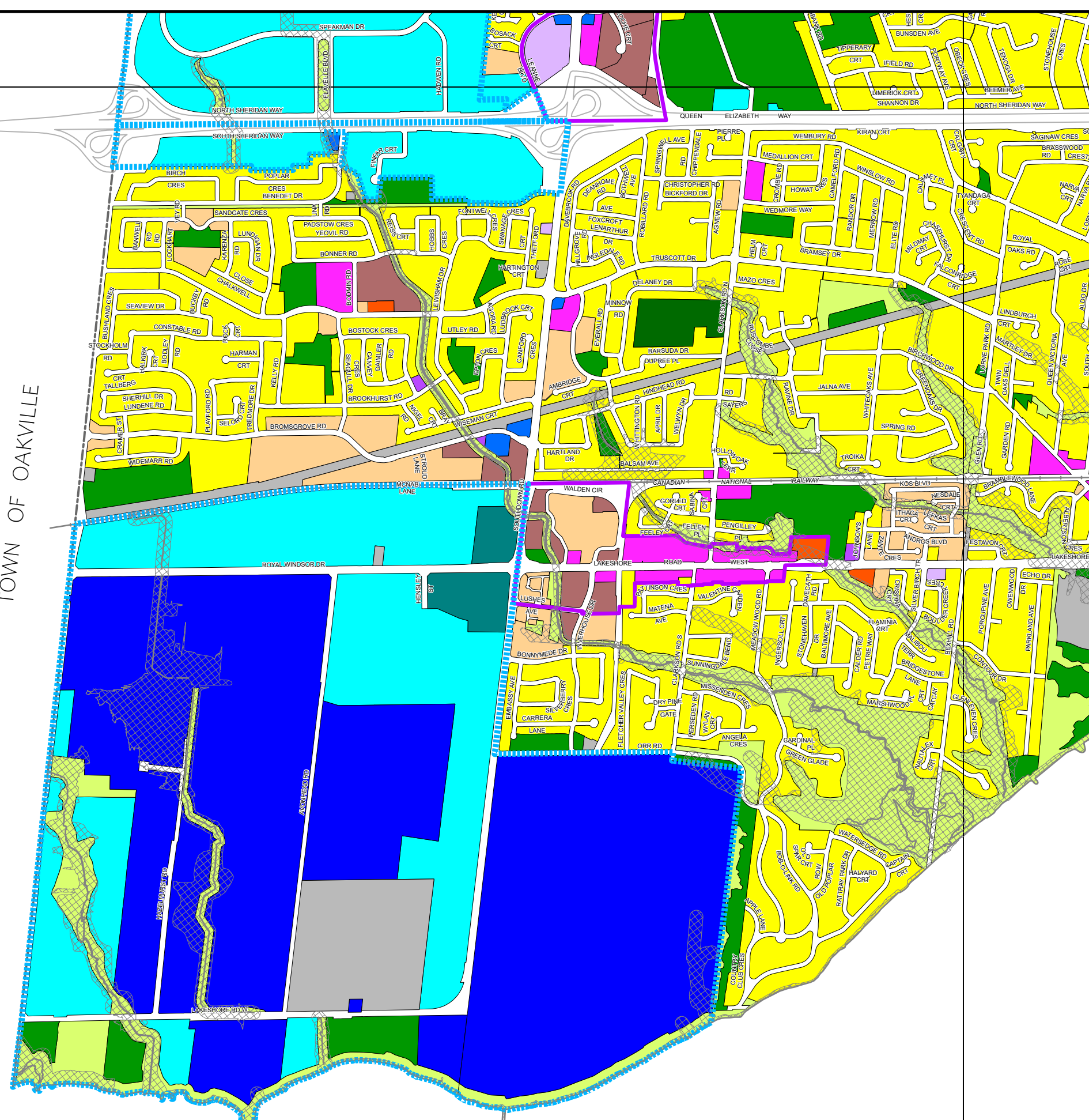
See Aircraft Noise Policies

Notes:

1. Major Transit Station Areas are shown on Schedule 8 and Schedules 8A to 8R.
2. The limits of the Natural Hazards shown on this schedule are for illustrative purposes only. The appropriate Conservation Authority should be consulted to determine their actual location.
3. Base map information (e.g. roads, highways, railways, watercourses), including any lands or bodies of water outside the city boundaries, is shown for information purposes only.
4. Roads shown on this schedule are existing or under construction and are shown for information purposes only. For future roads refer to Schedule 3, Long Term Street Network.



TOWN OF OAKVILLE



MISSISSAUGA OFFICIAL PLAN

Schedule 7 Land Use Designations



LAND USE DESIGNATIONS

Residential Low-Rise I	Office
Residential Low-Rise II	Business Employment
Residential Mid-Rise	Industrial
Residential High-Rise	Airport
Mixed Use	Institutional
Mixed Use Limited	Public Open Space
Downtown Mixed Use	Private Open Space
Downtown Core Mixed Use	Greenlands
Convenience Commercial	Parkway Belt West
Motor Vehicle Commercial	Utility
Mixed Employment	

STRATEGIC GROWTH AREAS

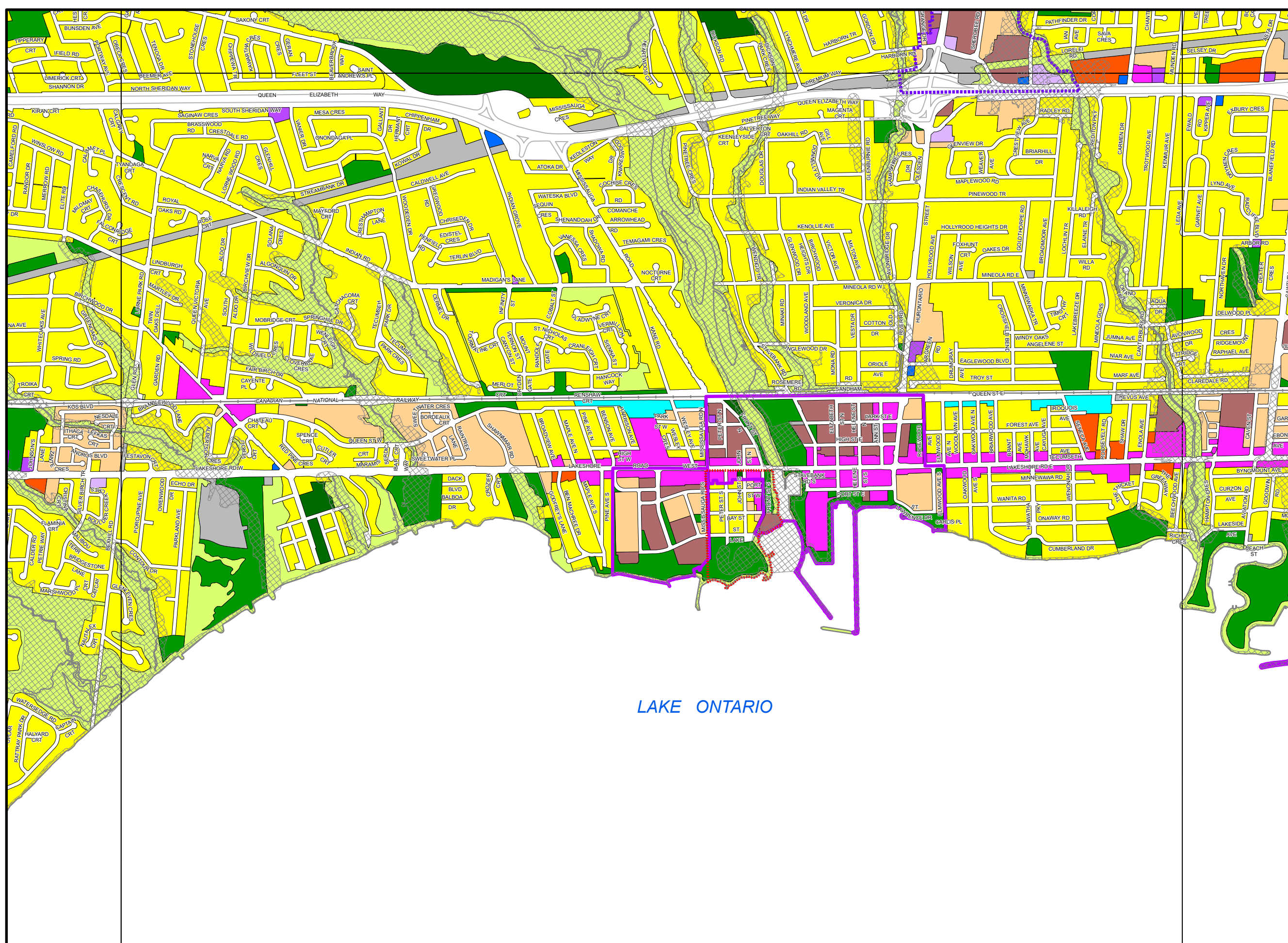
Downtown Core	Employment Area
Growth Centre	Lakeview Employment Area
Growth Node	Corridor Employment Area
	Special Policy Area
	Special Purpose Area

BASE MAP INFORMATION

Heritage Conservation District	Area Exception from LBPIA Operating Area
1996 NEP/2000 NEF Composite Noise Contours	Natural Hazards
LBPIA Operating Area Boundary	
	See Aircraft Noise Policies

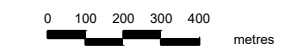
Notes:

1. Major Transit Station Areas are shown on Schedule 8 and Schedules 8A to 8R.
2. The limits of the Natural Hazards shown on this schedule are for illustrative purposes only. The appropriate Conservation Authority should be consulted to determine their actual location.
3. Base map information (e.g. roads, highways, railways, watercourses), including any lands or bodies of water outside the city boundaries, is shown for information purposes only.
4. Roads shown on this schedule are existing or under construction and are shown for information purposes only. For future roads refer to Schedule 3, Long Term Street Network.



MISSISSAUGA OFFICIAL PLAN

Schedule 7 Land Use Designations



LAND USE DESIGNATIONS

Residential Low-Rise I	Office
Residential Low-Rise II	Business Employment
Residential Mid-Rise	Industrial
Residential High-Rise	Airport
Mixed Use	Institutional
Mixed Use Limited	Public Open Space
Downtown Core Mixed Use	Private Open Space
Convenience Commercial	Greenlands
Motor Vehicle Commercial	Parkway Belt West
Mixed Employment	Utility

STRATEGIC GROWTH AREAS

Downtown Core	Employment Area
Growth Centre	Lakeview Innovation Corridor Employment Area
Growth Node	Special Policy Area
	Special Purpose Area

BASE MAP INFORMATION

Heritage Conservation District	Area Exception from LBPIA Operating Area
1996 NEP/2000 NEF Composite Noise Contours	Natural Hazards
LBPIA Operating Area Boundary	See Aircraft Noise Policies

- Notes:
1. Major Transit Station Areas are shown on Schedule 8 and Schedules 8A to 8R.
 2. The limits of the Natural Hazards shown on this schedule are for illustrative purposes only. The appropriate Conservation Authority should be consulted to determine their actual location.
 3. Base map information (e.g. roads, highways, railways, watercourses), including any lands or bodies of water outside the city boundaries, is shown for information purposes only.
 4. Roads shown on this schedule are existing or under construction and are shown for information purposes only. For future roads refer to Schedule 3, Long Term Street Network.

