

WARD 11 – TRAFFIC CALMING

Joymar Drive

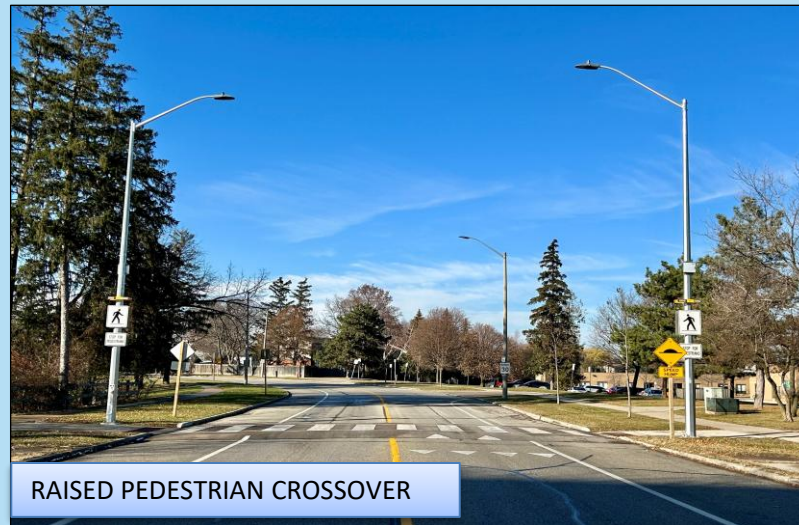
TRAFFIC CALMING DEVICES



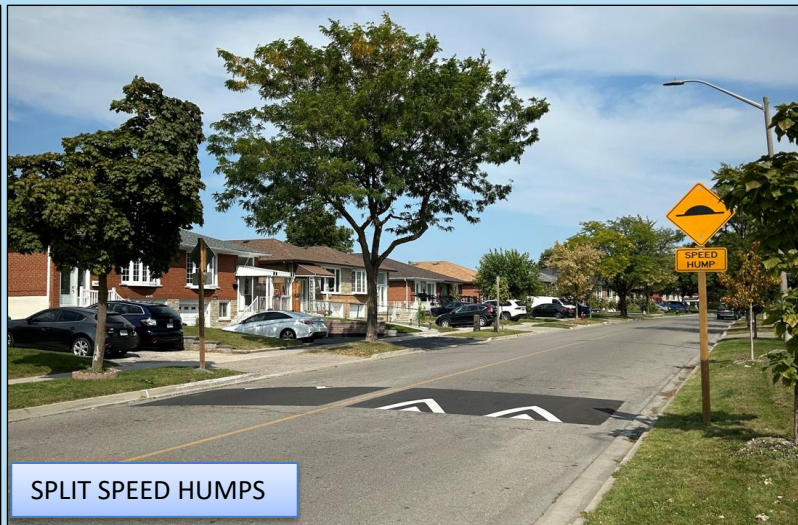
SPEED TABLE



SPEED CUSHIONS

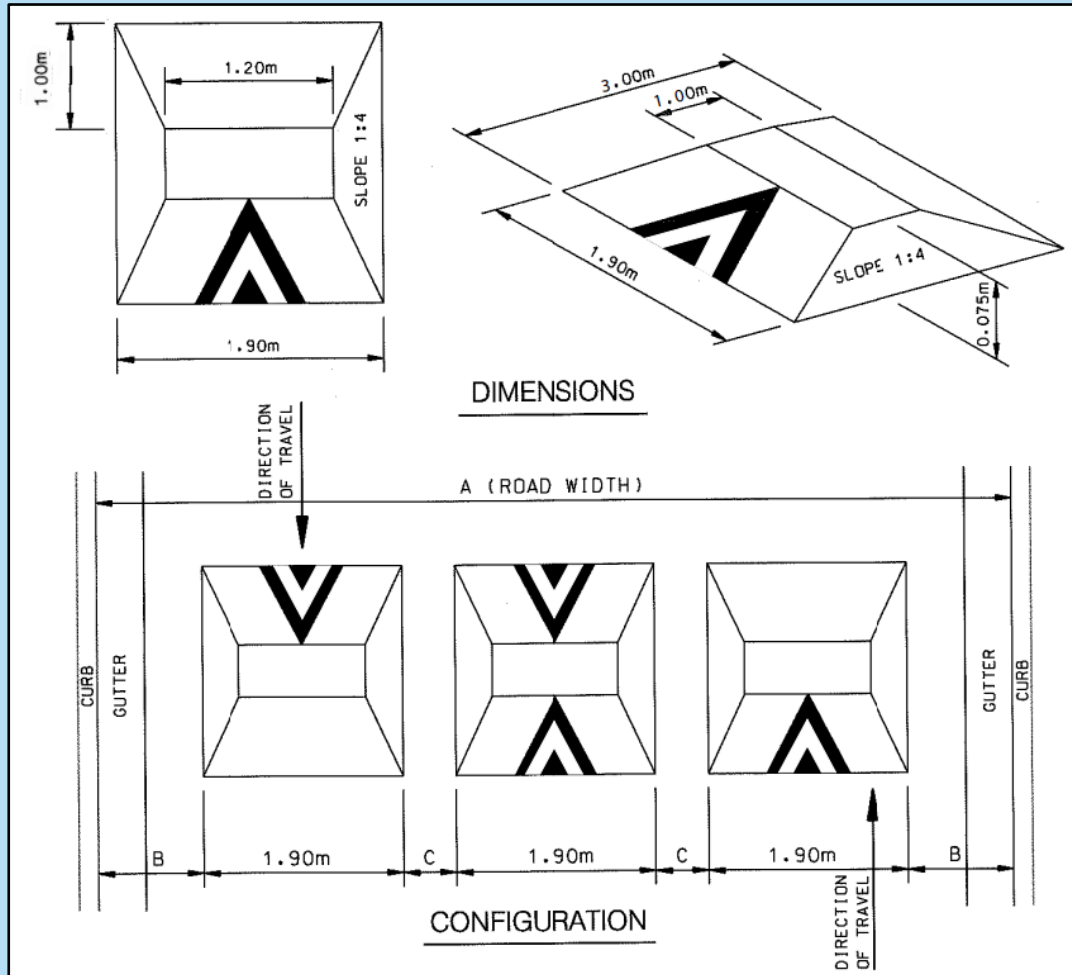


RAISED PEDESTRIAN CROSSOVER



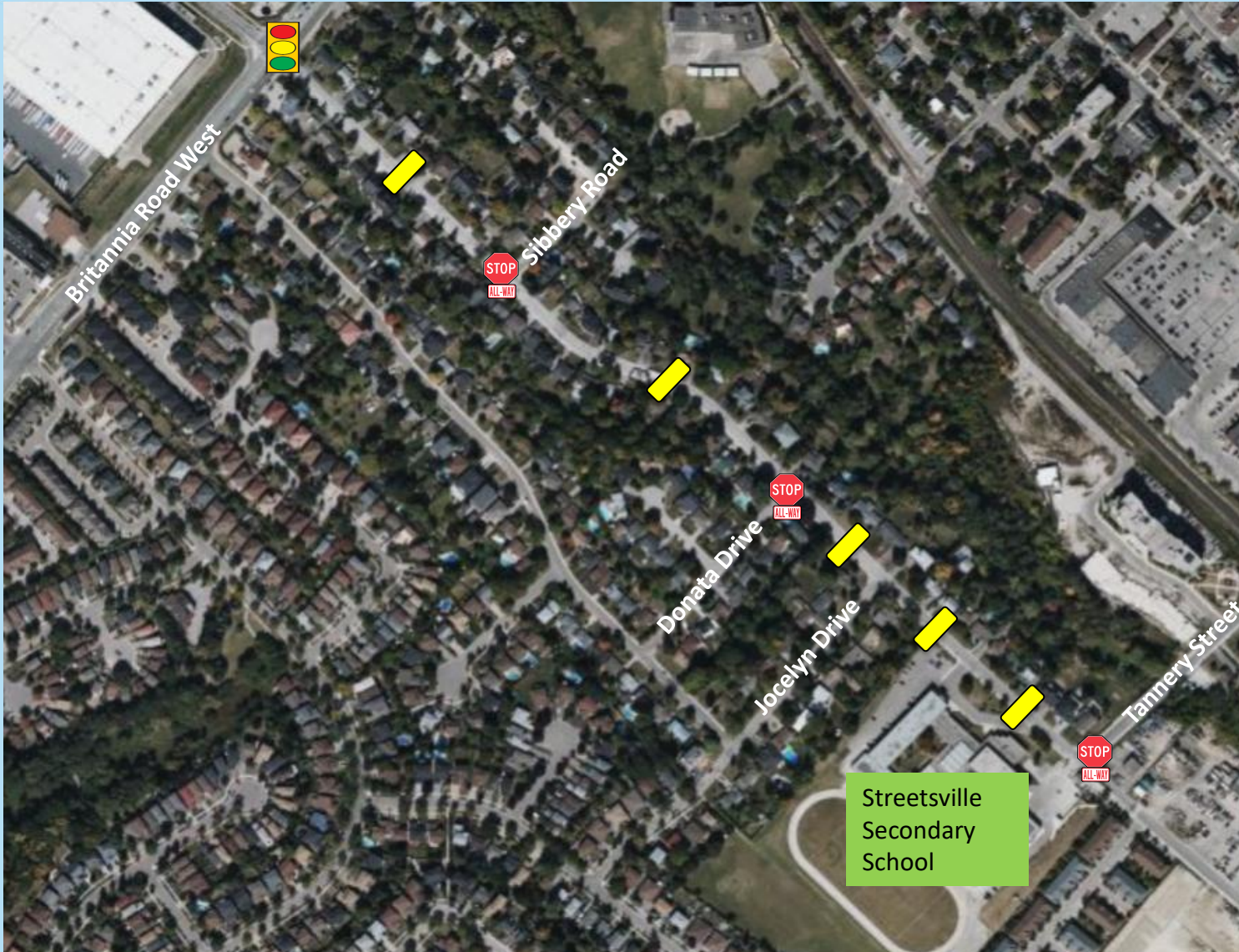
SPLIT SPEED HUMPS




SPEED CUSHION DESIGN



- Raised area on a roadway that does not cover the entire width of the road
- Designed to accommodate wide wheel base of emergency vehicles (easy passage)
- Designed to discourage drivers from travelling at excessive speeds
- A series of speed cushions is more effective than a single installation
- Use on neighbourhood roads

Joymar Drive



-  - Existing location of an All-Way Stop
-  - Existing signalized intersection
-  - Proposed Traffic Calming Device