

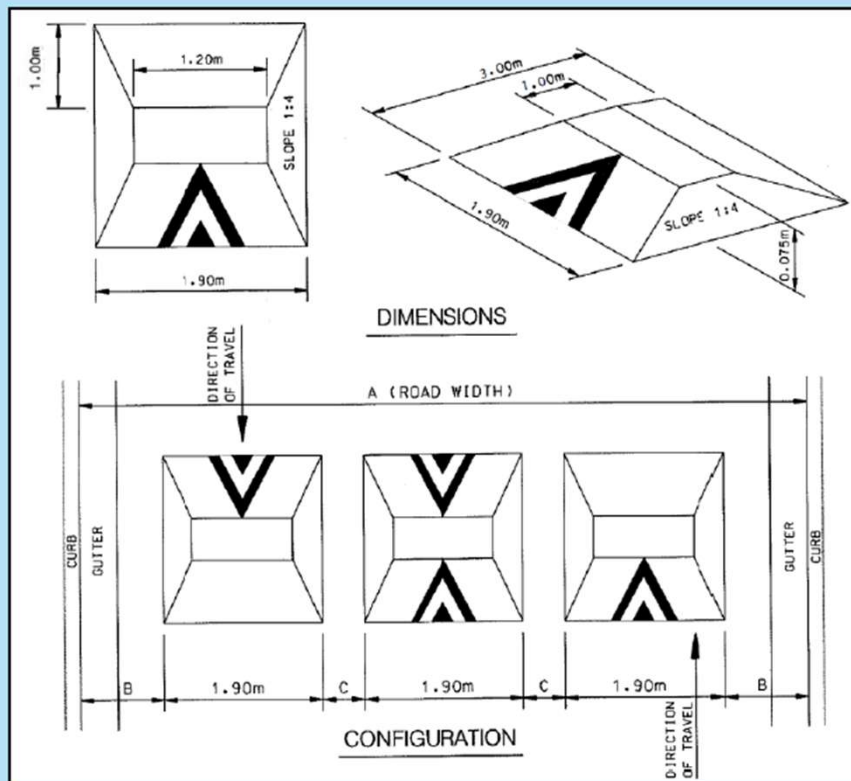
# **WARD 2 – TRAFFIC CALMING**

## **Clarkson Road South**

# TRAFFIC CALMING DEVICES



## SPEED CUSHION DESIGN

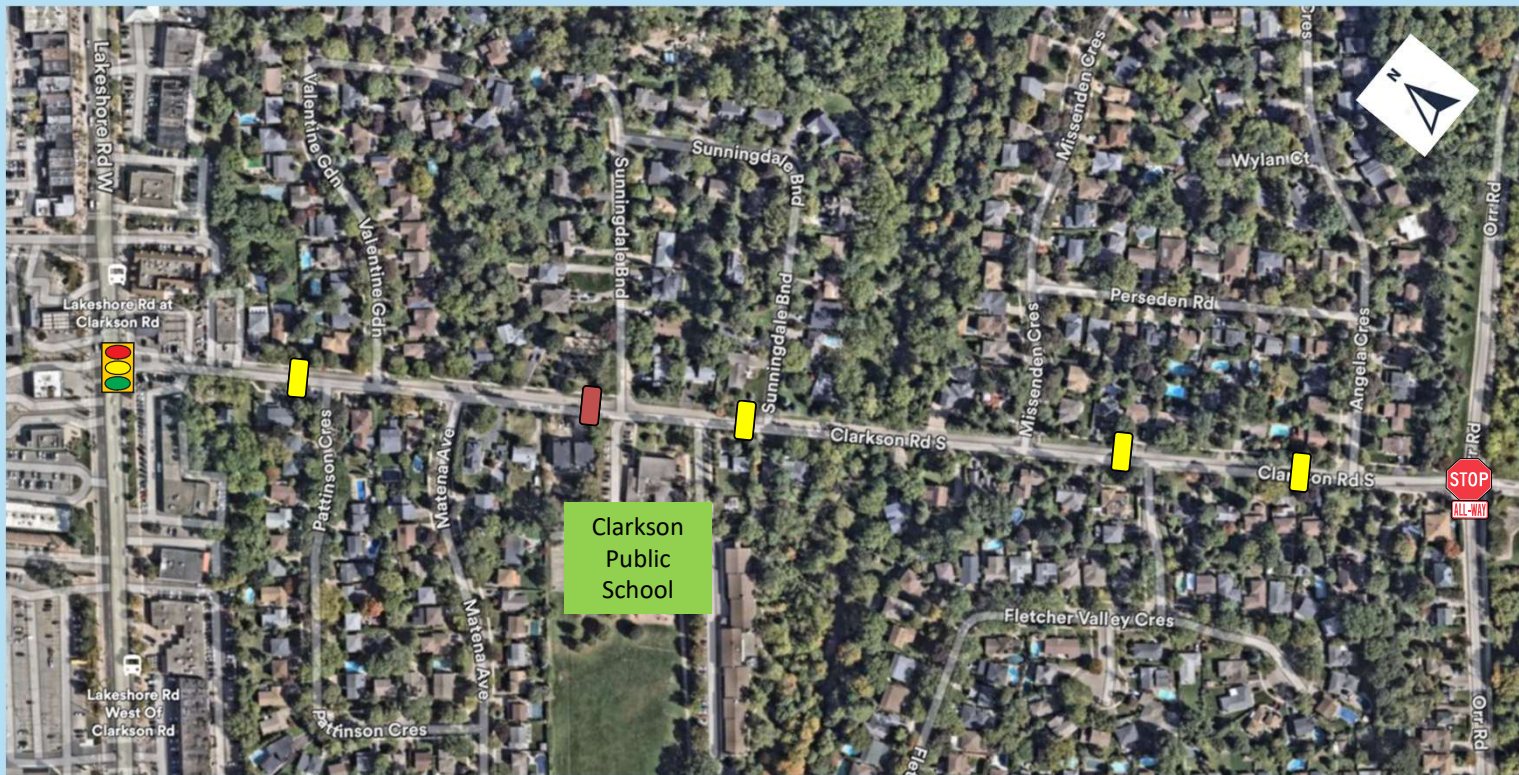


- Raised area on a roadway that does not cover the entire width of the road
- Designed to accommodate wide wheel base of emergency vehicles (easy passage)
- Designed to discourage drivers from travelling at excessive speeds
- A series of speed cushions is more effective than a single installation
- Use on neighbourhood roads

## Raised Pedestrian Crossover (PXO)



# Clarkson Road South



- Existing location of an All-Way Stop



- Existing signalized intersection



- Proposed Traffic Calming Device



- Proposed Raised Crosswalk & PXO