

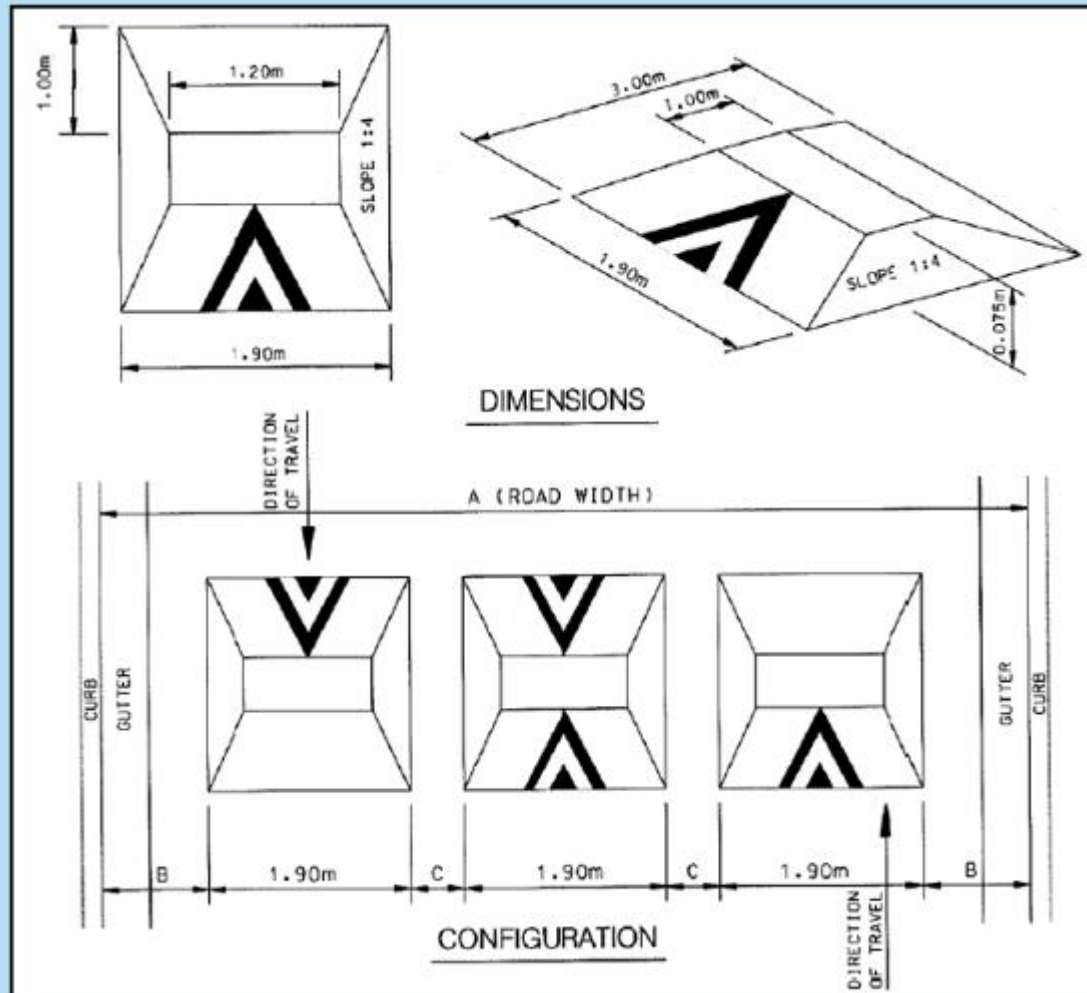
WARD 4 – TRAFFIC CALMING

Mississauga Valley Boulevard
(W/O Central Pkwy E.)

TRAFFIC CALMING DEVICES

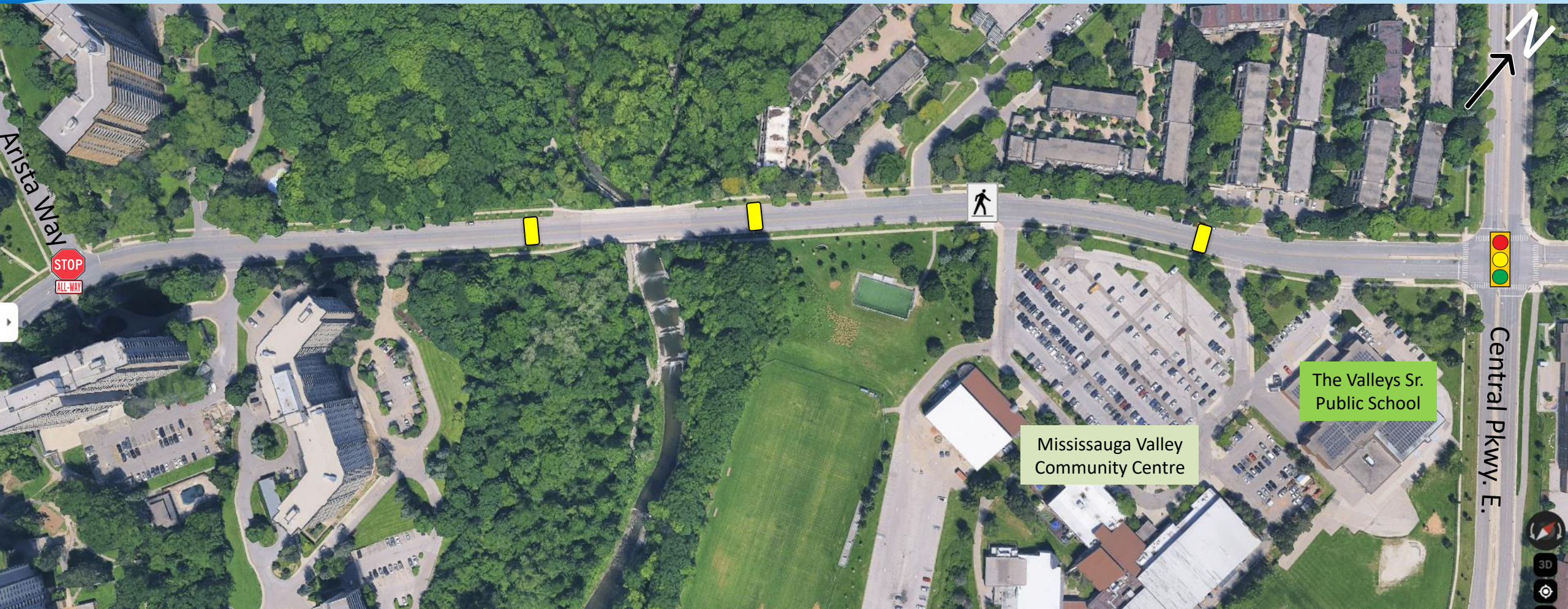


SPEED CUSHION DESIGN



- Raised area on a roadway that does not cover the entire width of the road
- Designed to accommodate wide wheel base of emergency vehicles (easy passage)
- Designed to discourage drivers from travelling at excessive speeds
- A series of speed cushions is more effective than a single installation
- Use on neighbourhood roads

Mississauga Valley Boulevard



- Existing PXO



- Existing location of an All-Way Stop



- Proposed Traffic Calming Device



- Existing Signalized Intersection