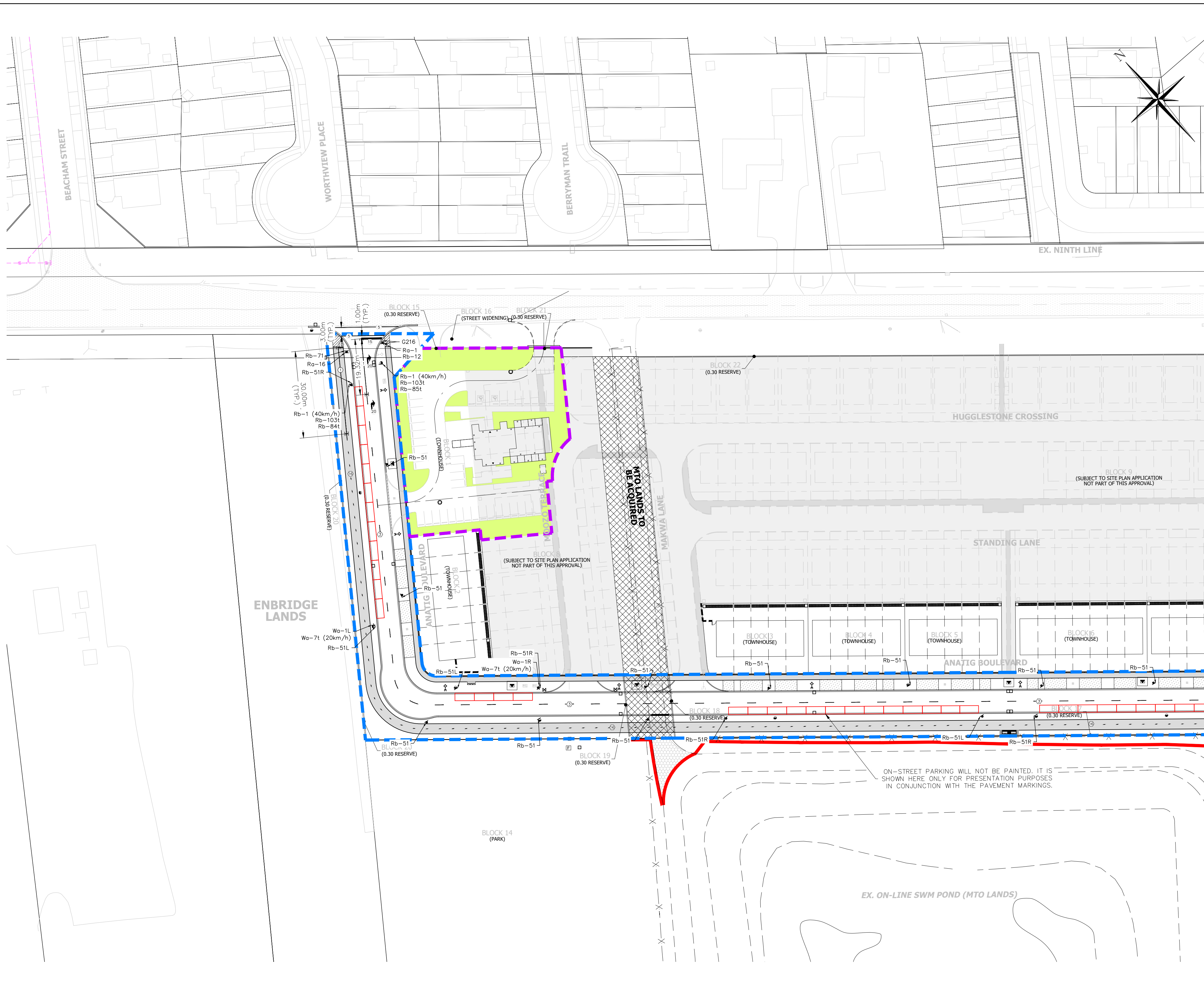
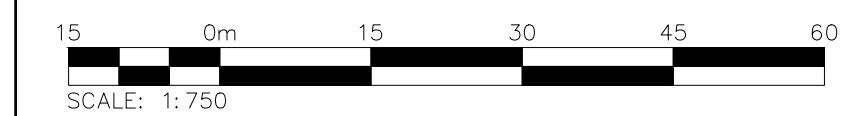
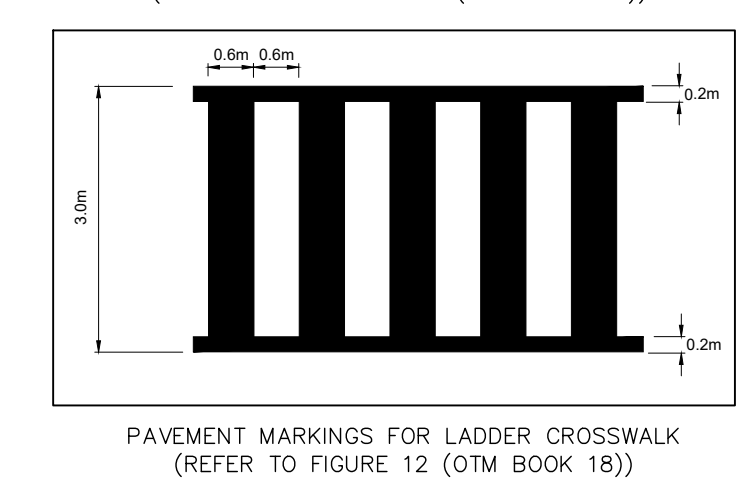
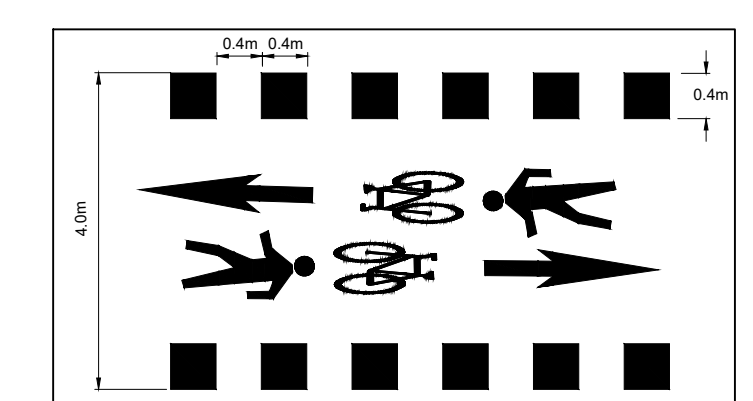
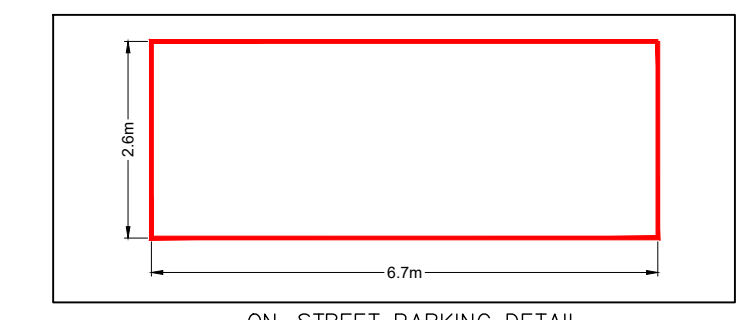


| LEGEND | | | | |
|---|---------------------------------|-------------------|----------|---------|
| | NORTH SUBDIVISION (PHASE 2) ROW | | | |
| | SOUTH SUBDIVISION (PHASE 1) | | | |
| | PROPOSED SIGN | | | |
| | RAISED DECORATIVE CONCRETE | | | |
| PAVEMENT MARKINGS LEGEND | | | | |
| 1 | SOLID YELLOW, 10cm | | | |
| 3 | 363 BROKEN YELLOW, 10cm | | | |
| 5 | SOLID WHITE, 10cm | | | |
| 6 | 333 BROKEN WHITE, 10cm | | | |
| 9 | SOLID WHITE, 20cm | | | |
| 13 | SOLID WHITE, 30cm | | | |
| 15 | SOLID WHITE, 60cm | | | |
| 16 | 0.32.7 BROKEN YELLOW, 10cm | | | |
| 17 | 0.40.4 BROKEN WHITE, 40cm | | | |
| 20 | SYMBOLS | | | |
| | LIMITS OF MARKINGS | | | |
| NOTES: | | | | |
| 1. 0.32.7, 333, 363, DENOTES PAVEMENT MARKING SPACING (IE., 3m LINE, 3m GAP, 3m LINE) | | | | |
| 2. USE TO DENOTE DURABLE PAVEMENT MARKING | | | | |
| SIGNAGE LEGEND | | | | |
| SIGN NAME | SIGN NUMBER | SIZE (cm) | OTM BOOK | SECTION |
| STOP | Ra-1 | 60x60 | 5 | 2 |
| ALL-WAY TAB | Ra-1t | 15x30 | 5 | 2 |
| BICYCLES YIELD TO PEDESTRIANS | Ra-16 | 30x60 | 5 | 5 |
| MAXIMUM SPEED | Rb-1 | 60x75 | 5 | 6 |
| NO LEFT TURN | Rb-12 | 60x60 | 5 | 8 |
| NO PARKING (LEFT/RIGHT) | Rb-51 (L/R) | 30x30 | 5 | 13 |
| SHARED PATHWAY | Rb-71 | 30x45 | 5 | 19 |
| BEGINS TAB | Rb-84t | 20x60 | 5 | 6 |
| ENDS TAB | Rb-85t | 20x60 | 5 | 12 |
| AREA TAB | Rb-103t | 20x60 | 5 | 6 |
| TURN | Wa-1 (L/R) | 60x60 | 6 | 2 |
| ADVISORY SPEED TAB | Wa-7t | 45x45 | 6 | 2 |
| CHECKERBOARD | Wa-8 | 75x75 | 6 | 2 |
| ROAD ID STREET NAME BLADE | G216 | 20xVARIABLE WIDTH | 8 | 8 |
| RED & WHITE TIGER TAIL | TIGER TAIL | 30x90 | - | - |



- Notes
- PAVEMENT MARKINGS TO BE COMPLETED IN ACCORDANCE WITH ONTARIO TRAFFIC MANUAL (OTM) BOOK 11 (PAVEMENT, HAZARDS AND DELINEATION MARKING).
 - SIGNAGE SHALL ADHERE TO ONTARIO TRAFFIC MANUAL (OTM) BOOK 5 (REGULATORY SIGNS) AND BOOK 18 (CYCLING FACILITIES).
 - ROAD EXTENSION TO BE COMPLETED AS PART OF FUTURE DEVELOPMENT PHASES. THIS PLAN IS INTENDED TO SHOW PAVEMENT MARKING AND SIGNAGE DETAILS ONLY. THIS DRAWING IS TO BE READ AND UNDERSTOOD WITH ALL OTHER PLANS AND DOCUMENTS APPLICABLE TO THIS PROJECT.
 - MIXED PEDESTRIAN AND CYCLIST CROSS-RIDES PAVEMENT MARKINGS TO APPLY FIGURE 4.103 (OTM BOOK 18).
 - TACTILE PLATES AND SIDEWALK RAMP TO BE PROVIDED AT ALL PEDESTRIAN CROSSING LOCATIONS, CONSISTENT WITH THE AODA REQUIREMENTS.
 - WHERE POSSIBLE, CLOSELY PLACED SIGNS MAY BE MOUNTED ON THE SAME POST.
 - MULTI-USE PATHWAYS TO BE DESIGNED WITH CROSS-RIDES.
 - ON-STREET PARKING WILL NOT BE PAINTED. IT IS SHOWN HERE ONLY FOR PRESENTATION PURPOSES IN CONJUNCTION WITH THE PAVEMENT MARKINGS.



MATCH LINE SEE DWG C309

| FIRST DATE | SECOND DATE | INTERIM DATE | FINAL DATE |
|-------------|-------------|--------------|------------|
| JAN/29/2024 | JUL/12/2024 | | |

DESIGN BY: _____

APPROVED BY: _____

CROZIER CONSULTING ENGINEERS
 211 YONGE STREET SUITE 600
 TORONTO, ON M5B 1M4
 416-477-3392 T
 WWW.CROZIER.CA

NINTH LINE (DERRY-BRITANIA)
 CITY OF MISSISSAUGA



NORTH SUBDIVISION (PHASE 2)
 PAVEMENT MARKING AND SIGNAGE PLAN
 (BEFORE NINTH LINE WIDENING)

| SCALE | 1:750 | AREA | PROJECT No. | 780-5227 |
|----------|------------|------------|-------------|----------|
| DRAWN BY | R.L. | CHECKED BY | P.A. | PLAN No. |
| DATE | 11/25/2025 | SHEET | 1 OF 2 | C308 |