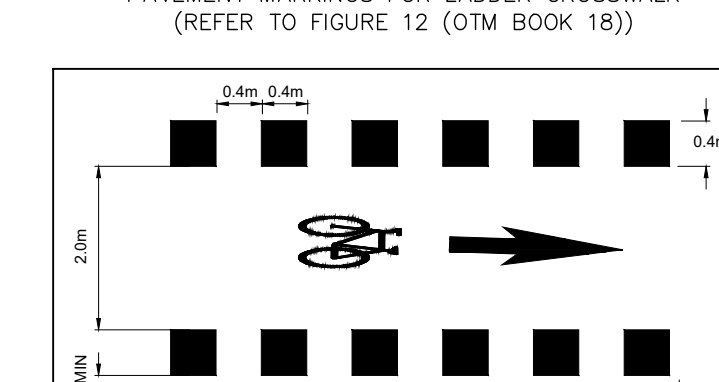
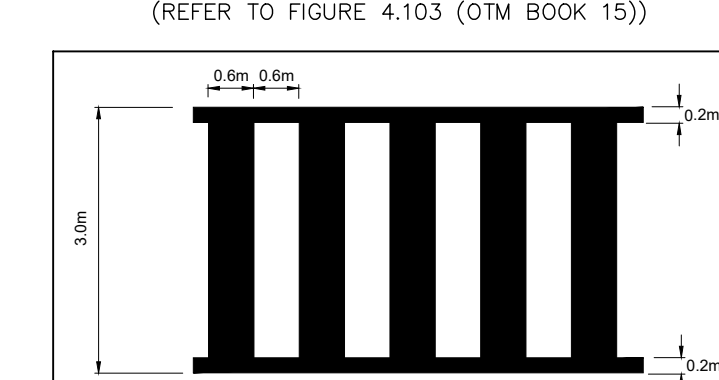
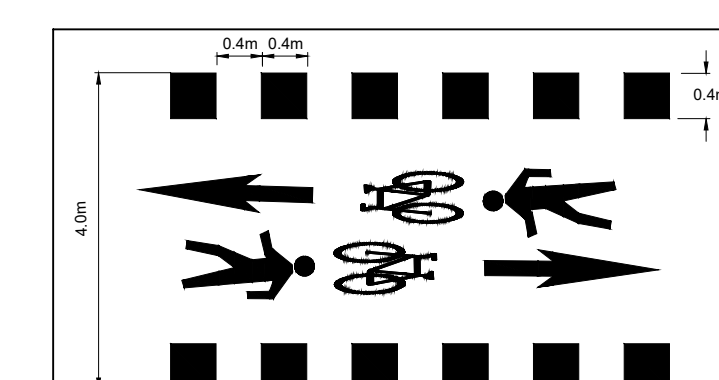
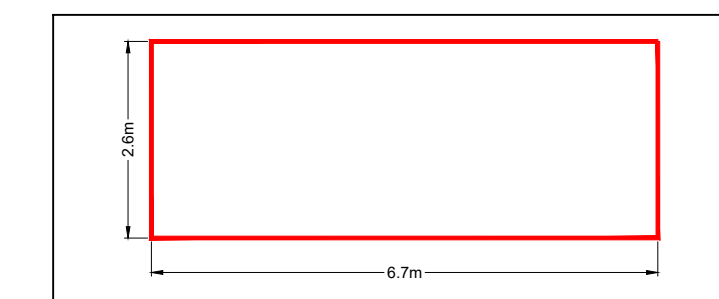
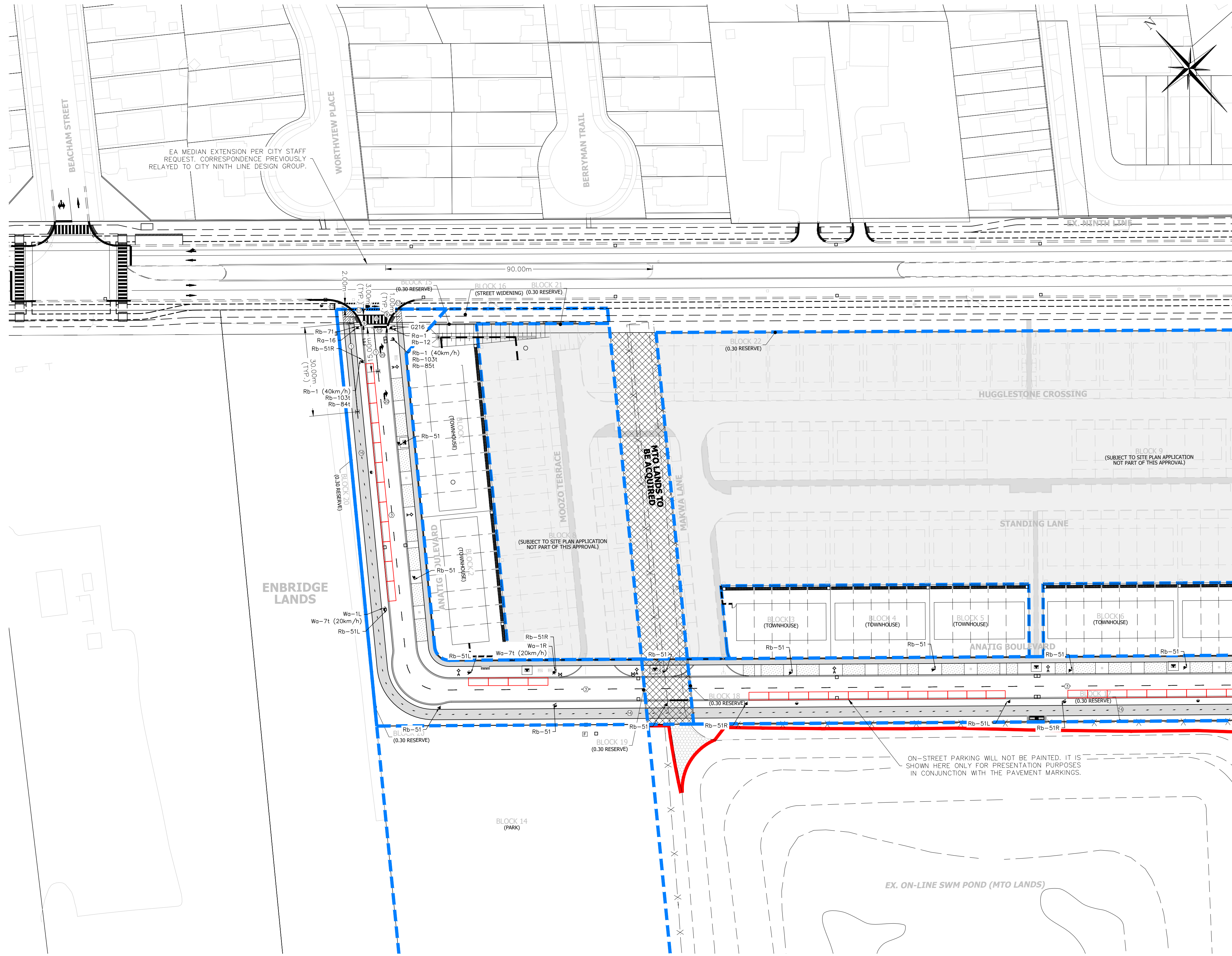
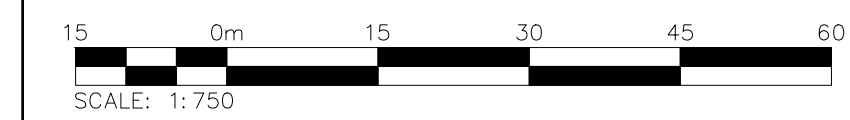


LEGEND				
	NORTH SUBDIVISION (PHASE 2) ROW			
	SOUTH SUBDIVISION (PHASE 1)			
	PROPOSED SIGN			
	RAISED DECORATIVE CONCRETE			
PAVEMENT MARKINGS LEGEND				
1	SOLID YELLOW, 10cm			
3	363 BROKEN YELLOW, 10cm			
5	SOLID WHITE, 10cm			
6	333 BROKEN WHITE, 10cm			
9	SOLID WHITE, 20cm			
13	SOLID WHITE, 30cm			
15	SOLID WHITE, 60cm			
16	0.32.7 BROKEN YELLOW, 10cm			
17	0.40.4 BROKEN WHITE, 40cm			
20	SYMBOLS			
LIMITS OF MARKINGS				
NOTES:				
1. 0.32.7, 333, 363, DENOTES PAVEMENT MARKING SPACING (IE., 3m LINE, 3m GAP, 3m LINE)				
2. USE TO DENOTE DURABLE PAVEMENT MARKING				
SIGNAGE LEGEND				
SIGN NAME	SIGN NUMBER	SIZE (cm)	OTM BOOK	SECTION
STOP	Ra-1	60x60	5	2
ALL-WAY TAB	Ra-1t	15x30	5	2
BICYCLES YIELD TO PEDESTRIANS	Ra-16	30x60	5	5
MAXIMUM SPEED	Rb-1	60x75	5	6
NO LEFT TURN	Rb-12	60x60	5	8
NO PARKING (LEFT/RIGHT)	Rb-51 (L/R)	30x30	5	13
SHARED PATHWAY	Rb-71	30x45	5	19
BEGINS TAB	Rb-84t	20x60	5	6
ENDS TAB	Rb-85t	20x60	5	12
AREA TAB	Rb-103t	20x60	5	6
TURN	Wa-1 (L/R)	60x60	6	2
ADVISORY SPEED TAB	Wa-7t	45x45	6	2
CHECKERBOARD	Wa-8	75x75	6	2
ROAD ID STREET NAME BLADE	G216	20xVARIABLE WIDTH	8	8
RED & WHITE TIGER TAIL	TIGER TAIL	30x90	-	-



MATCH LINE SEE DWG C311

FIRST DATE	JAN/29/2024	SECOND DATE	JUL/12/2024	INTERIM DATE		FINAL DATE	
				DESIGN BY: _____			
				APPROVED BY: _____			



NINTH LINE (DERRY-BRITANIA)
CITY OF MISSISSAUGA



NORTH SUBDIVISION (PHASE 2)
PAVEMENT MARKING AND SIGNAGE PLAN
(AFTER NINTH LINE WIDENING)

SCALE	1:750	AREA		PROJECT No.	780-5227
DRAWN BY	R.L.	CHECKED BY	P.A.	PLAN No.	
DATE	11/25/2025	SHEET	1 OF 2		C310

- Notes
- PAVEMENT MARKINGS TO BE COMPLETED IN ACCORDANCE WITH ONTARIO TRAFFIC MANUAL (OTM) BOOK 11 (PAVEMENT, HAZARDS AND DELINEATION MARKING).
 - SIGNAGE SHALL ADHERE TO ONTARIO TRAFFIC MANUAL (OTM) BOOK 5 (REGULATORY SIGNS) AND BOOK 18 (CYCLING FACILITIES).
 - ROAD EXTENSION TO BE COMPLETED AS PART OF FUTURE DEVELOPMENT PHASES. THIS PLAN IS INTENDED TO SHOW PAVEMENT MARKING AND SIGNAGE DETAILS ONLY. THIS DRAWING IS TO BE READ AND UNDERSTOOD WITH ALL OTHER PLANS AND DOCUMENTS APPLICABLE TO THIS PROJECT.
 - MIXED PEDESTRIAN AND CYCLIST CROSS-RIDES PAVEMENT MARKINGS TO APPLY FIGURE 4.103 (OTM BOOK 15).
 - TACTILE PLATES AND SIDEWALK RAMP TO BE PROVIDED AT ALL PEDESTRIAN CROSSING LOCATIONS, CONSISTENT WITH THE AODA REQUIREMENTS.
 - WHERE POSSIBLE, CLOSELY PLACED SIGNS MAY BE MOUNTED ON THE SAME POST.
 - MULTI-USE PATHWAYS TO BE DESIGNED WITH CROSS-RIDES.
 - ON-STREET PARKING WILL NOT BE PAINTED. IT IS SHOWN HERE ONLY FOR PRESENTATION PURPOSES IN CONJUNCTION WITH THE PAVEMENT MARKINGS.