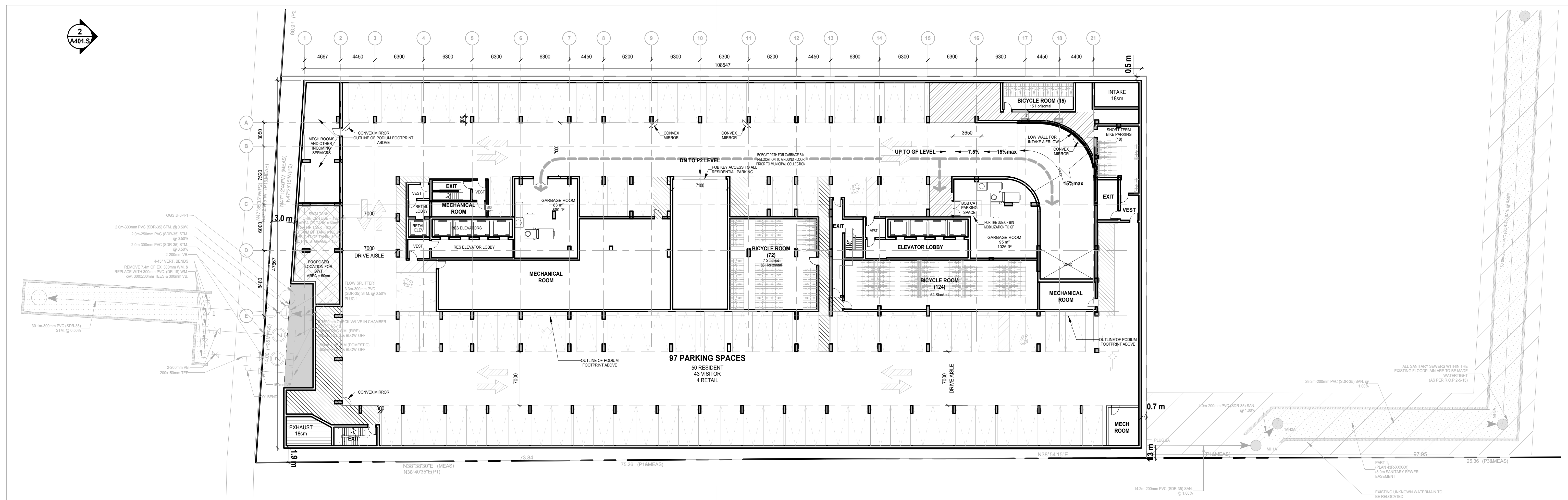
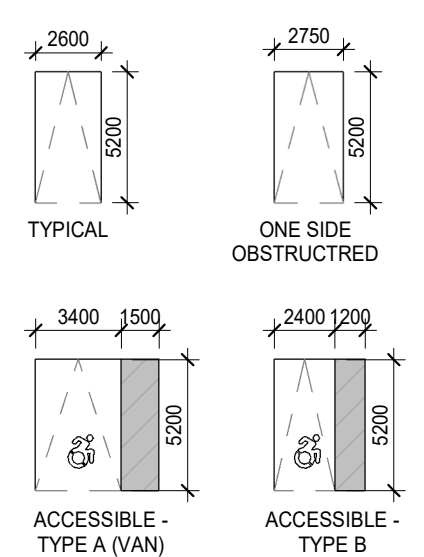
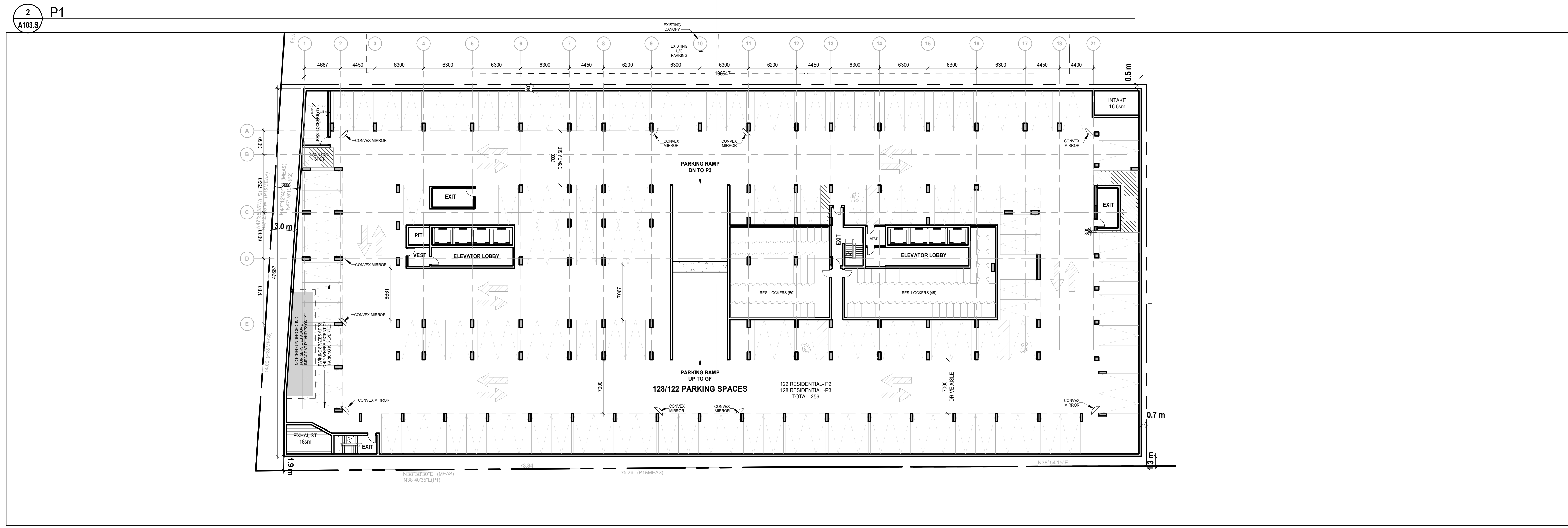


- PARKING NOTES:**
1. MINIMUM PARKING SPACE SIZES (UNLESS OTHERWISE NOTED):
 - 2000mm WIDE X 5200mm LONG (NO SIDES OBSTRUCTED)
 - 2700mm WIDE X 5200mm LONG (ONE SIDE OBSTRUCTED)
 - 2000mm WIDE X 5200mm LONG (TWO SIDES OBSTRUCTED)
 2. MAINTAIN MINIMUM DRIVE AISLE WIDTH OF 7000mm UNLESS OTHERWISE NOTED.
 3. MAINTAIN MINIMUM HEADROOM CLEARANCE OF 2100mm THROUGHOUT.

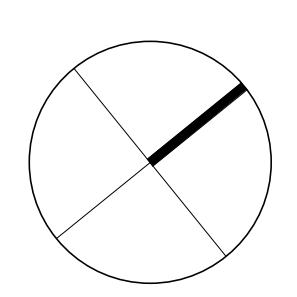
- PARKING LEGEND:**
- ⊙ COMMERCIAL PARKING SPACE
 - ⊙ RESIDENTIAL PARKING SPACE
 - ⊙ VISITOR PARKING SPACE
 - ⊙ EXISTING PARKING SPACE
 - ▬ BIKE LOCKER
 - ▬ BIKE PARKING (STACKED)
 - ▬ BIKE PARKING (VERTICAL)
 - ◊ CONVEX MIRROR
 - ⊙ LIGHT STANDARD
 - ▨ PAINTED LINES
 - ⊠ FIRE-RATED BULKHEAD



| Date | No. | Description |
|-----------------|-----|-------------|
| REVISION RECORD | | |



| | |
|--------------|----------------|
| 2026-04-10 | ZBA Submission |
| ISSUE RECORD | |



BDP. Quadrangle

Quadrangle Architects Limited
 The Wood, 8 Spadina Avenue, Suite 2100, Toronto, ON M5V 0B9
 T: 416.598.1242 www.bdpquadrangle.com

2233 Hurontario Street
 2233 Hurontario Street
 for
 2233 & 2235 Hurontario LTD

24031 1:250 RK KCR
 PROJECT SCALE DRAWN REVIEWED

P1-P3 Underground

A103.S

Note: This drawing is the property of the Architect and may not be reproduced or used without the expressed consent of the Architect. The Contractor is responsible for checking and verifying all notes and dimensions and shall report all discrepancies to the Architect and obtain confirmation prior to commencing work.

1 P2-P3
A103.S

C:\Users\KCR\OneDrive\Documents\BDP_AR_DATE_24031_2233_Hurontario_P2P3_KC4168.rvt

2026-04-22 2:43:53 PM