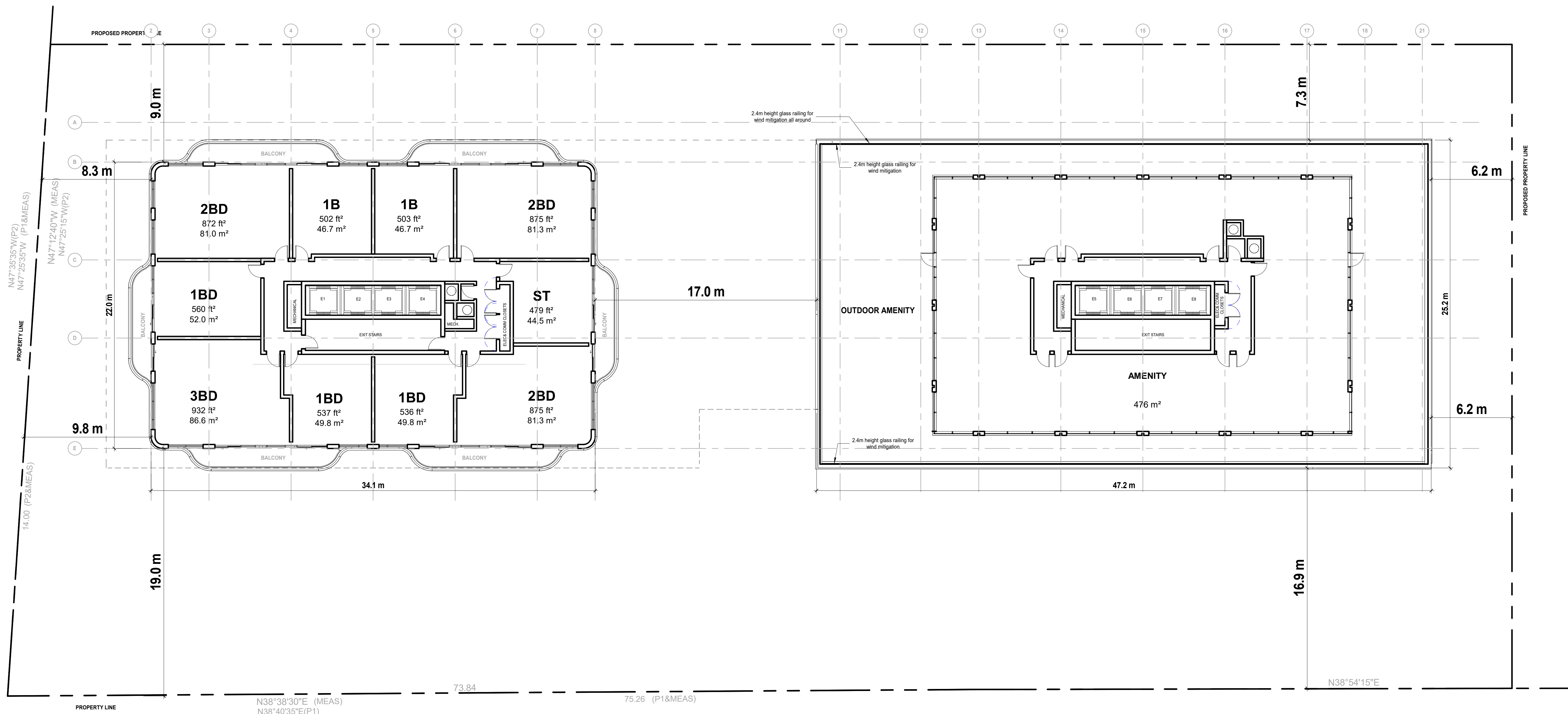


1 TYPICAL TOWER FLOOR PLAN



2 FLOOR 8

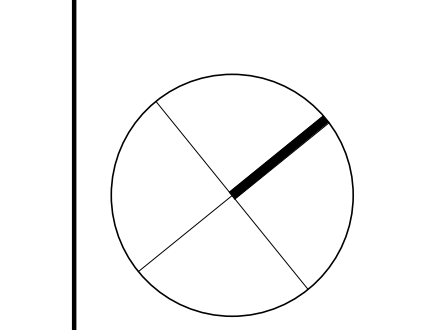
Date	No.	Description
2026-04-10	ZBA Submission	
2024-12-19	Issued for DARC submission	

REVISION RECORD

2026-04-10 ZBA Submission

2024-12-19 Issued for DARC submission

ISSUE RECORD



**BDP.
Quadrangle**

Quadrangle Architects Limited
The Wall, 8 Spadina Avenue, Suite 2100, Toronto, ON M5V 0S9
1-416-598-1342 www.bdpquadrangle.com

2233 Hurontario Street
2233 Hurontario Street
for
2233 & 2235 Hurontario LTD

24031 1 : 150 CSO KCR
PROJECT SCALE DRAWN REVIEWED

Level 8 and Typical Tower Plan

A204.S

Note: This drawing is the property of the Architect and may not be reproduced or used without the expressed consent of the Architect. The Contractor is responsible for checking and verifying all data and dimensions and shall report all discrepancies to the Architect and obtain verification prior to commencing work.

C:\Users\KCR\OneDrive\Documents\BDP\AR_DATE_2401_2233_Hurontario_2235_KR4168.rvt

2026-04-22 2:44:13 PM