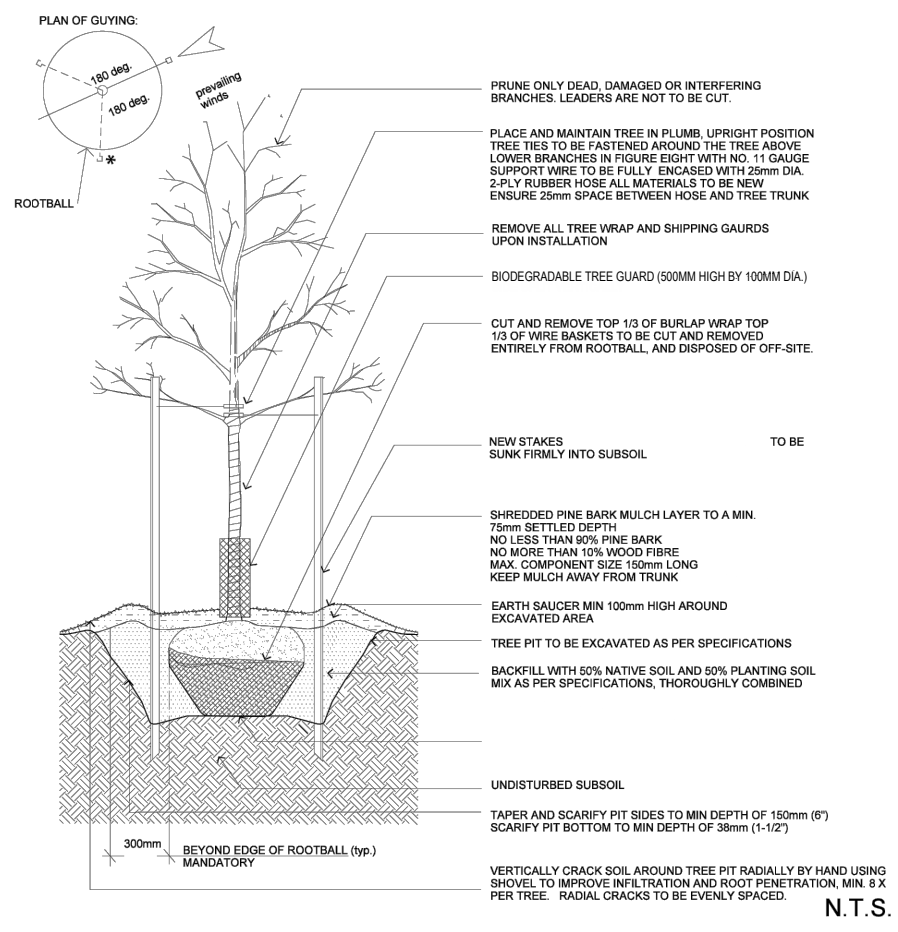


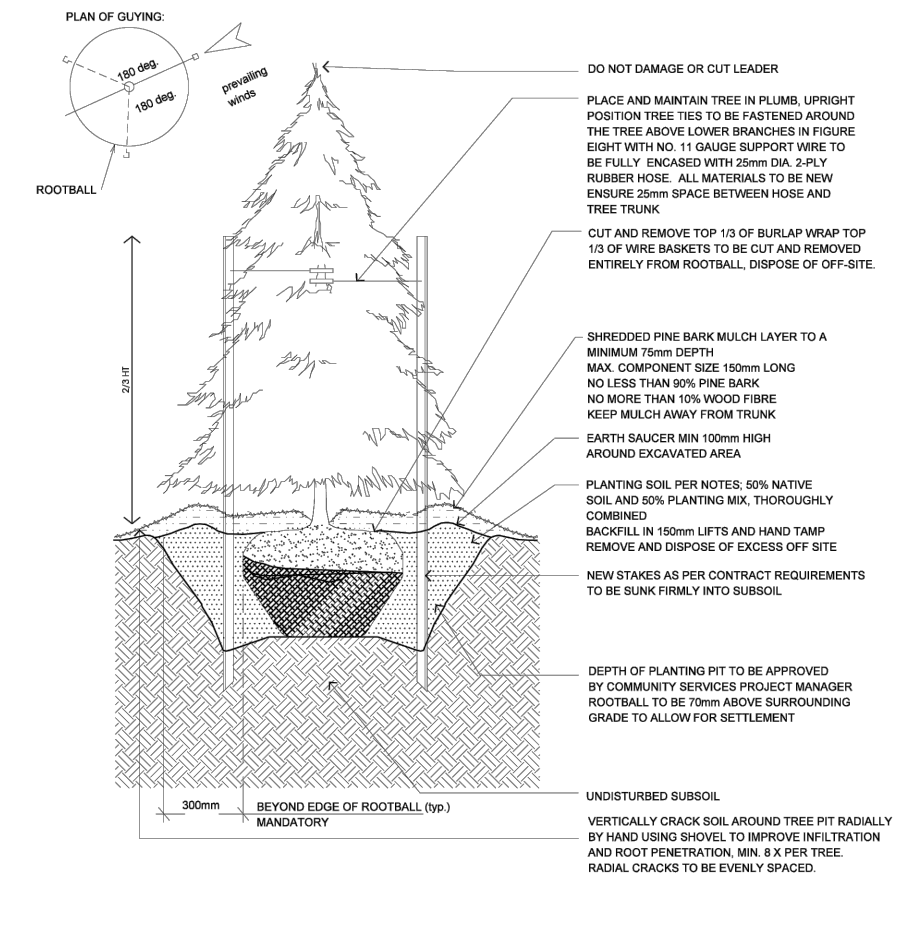
02950-1

Planting Tree Deciduous



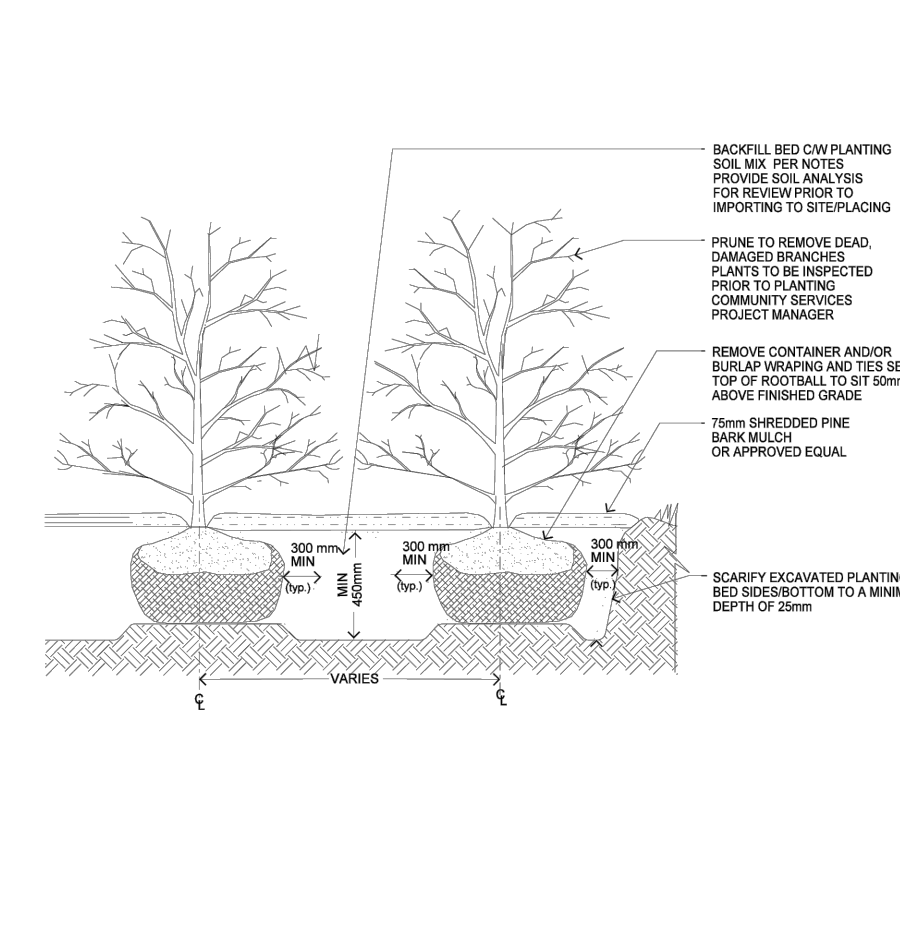
02950-2

Planting Tree Coniferous



02950-6

Planting Shrub



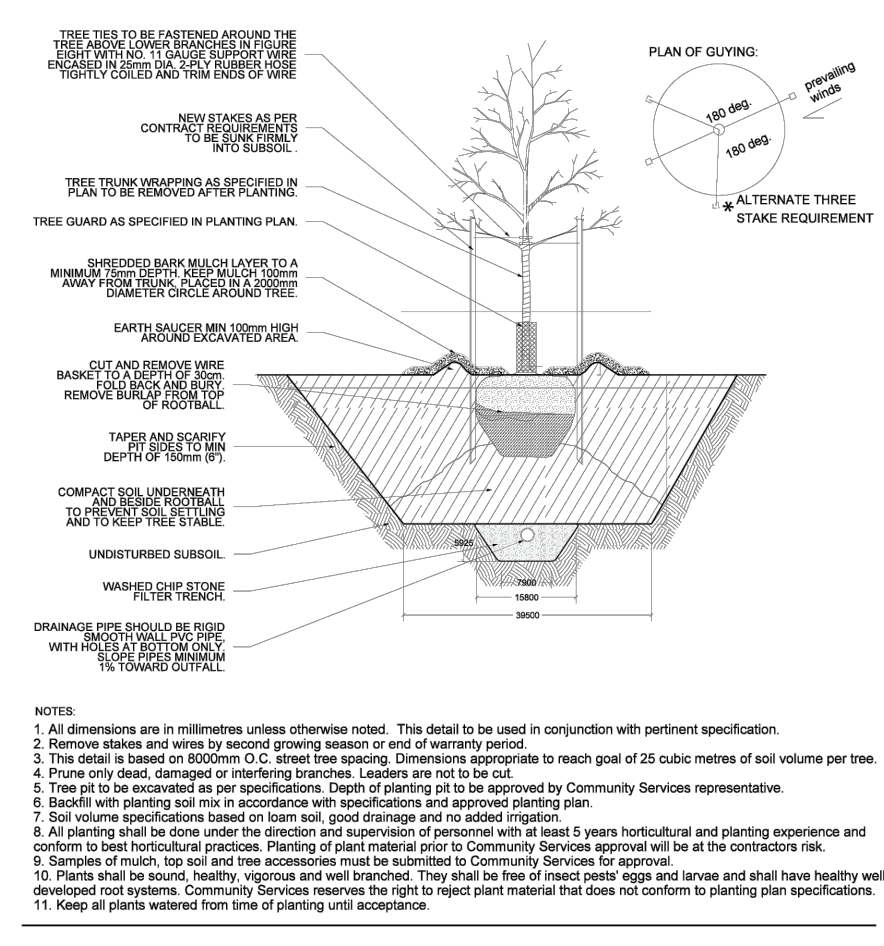
1 DECIDUOUS TREE PLANTING
N.T.S.

2 CONIFEROUS TREE PLANTING
N.T.S.

3 SHRUB PLANTING
N.T.S.

02950-17

Tree Planting Continuous Soil Trench



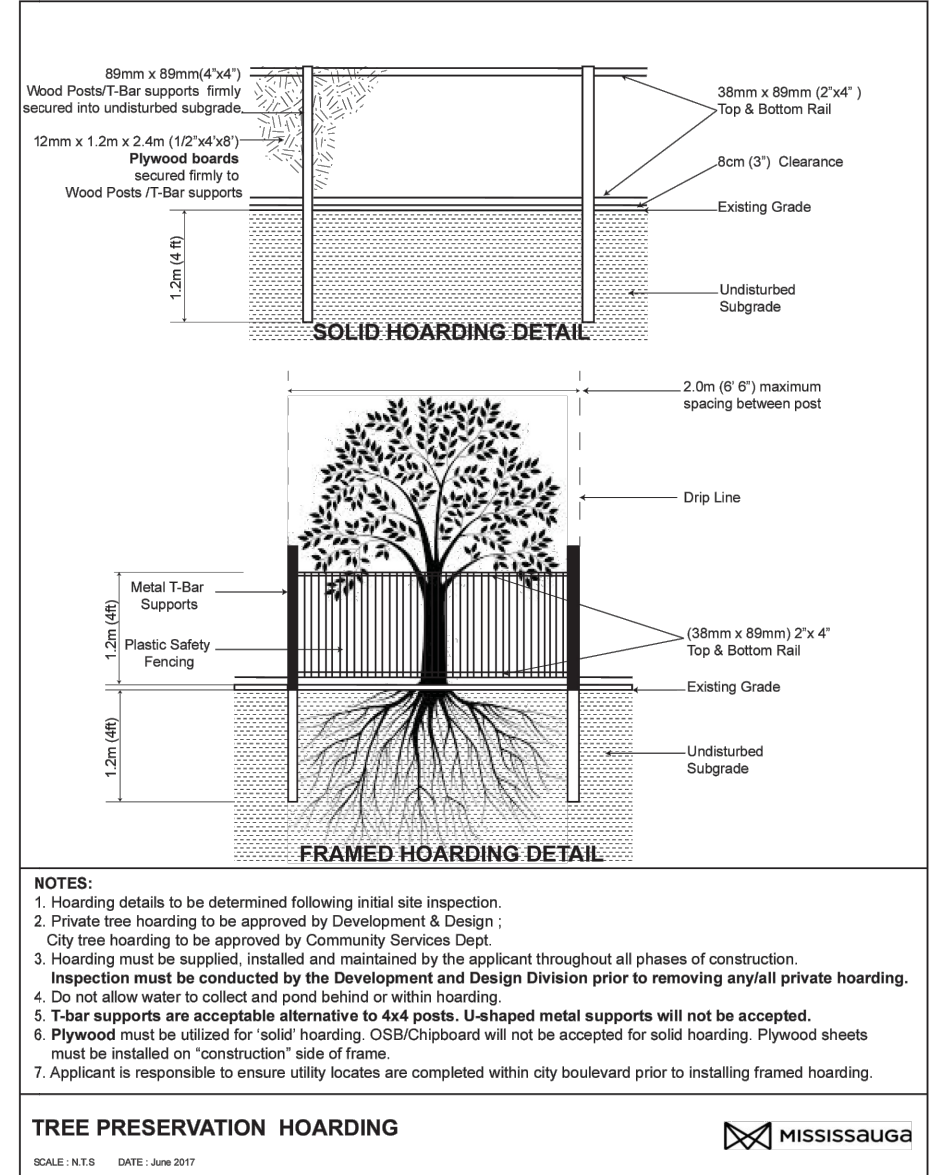
4 CONTINUOUS TRENCH
N.T.S.

02950-26

Planting Tree Shrub Planting Notes

- All dimensions are in millimeters unless otherwise noted.
- Conduct all planting under the direction and supervision of qualified personnel with a minimum of five (5) years of experience in planting installations.
- Stake out tree and/or planting bed locations before excavation for review by the Community Services Representative. Plan locations may shift according to on-site conditions.
- Warranty all plant material, including seeded/loaded areas, planting accessories and work in this section against defects or non-establishment for a period of two (2) years from date of the Substantial Performance of Work.
- Make trees and other plant material available for inspection at the source of supply upon request from Community Services Representative. Approval of plant material at source will not impair the right of the Community Services Representative to inspect plants upon arrival on the site or during the course of construction and to reject plants which have been damaged, or which, in any way, do not conform to the specifications. Plants that do not conform to the Contract requirements may be rejected at any time.
- Arrange for review of plant material by Community Services Representative upon delivery to site. Review is required for proposed planting pits and/or beds before installation, planting and/or backfilling. Ensure that all plant material conforms to planting plan, detail, and current Canadian Nursery Landscape Association standards. The Community Services Representative reserves the right to reject plant material that does not meet the requirements of this Contract, and to have such works corrected at the Contractor's expense. Collected plants are not permitted.
- Plants must be sound, healthy, vigorous and well-branched. They must be true to type, free of wounds, insect pests, eggs and larvae, and have healthy, well-developed root systems. All plant materials must meet the most current horticultural standards of the Canadian Nursery Landscape Association 'Canadian Nursery Stock Standard' with respect to size, height, spread, grading and quality. Plants must be densely foliated when in leaf.
- Measure plants as per 'Canadian Nursery Stock Standard' when the branches are in their normal position. Height and spread dimensions specified refer to the main body of the plant, and neither from the branch tip to the base of the root ball nor from branch tip to branch tip. The height of coniferous trees will be determined midway between the top of the leader and the uppermost whorl to the top of the root ball.
- Propose all substitutions in advance and obtain written approval from the Community Services Representative before proceeding.

5 TREE & SHRUB NOTES
N.T.S.



6 TREE PRESERVATION HOARDING
N.T.S.



20 Champlain Blvd, Suite 102 - Toronto ON - M3H 2Z1
(416) 638-4911 - info@studiola.ca - studiola.ca

2233-2235 HURONTARIO ST

MISSISSAUGA, ON

Project Number
26-107

Client
2233 & 2235 Hurontario LTD.

Consultant

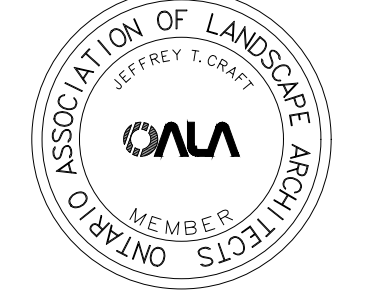
ARCHITECT
BOP QUADRANGLE
8 SPADINA AVENUE, SUITE 2100
TORONTO, ON M5V 0S8
TEL: 416-598-1240

CIVIL ENGINEER
URBANTECH
2030 BRISTOL CIRCLE, SUITE 105
CARVILLE, ON L6H 0H2
TEL: 905-829-8818

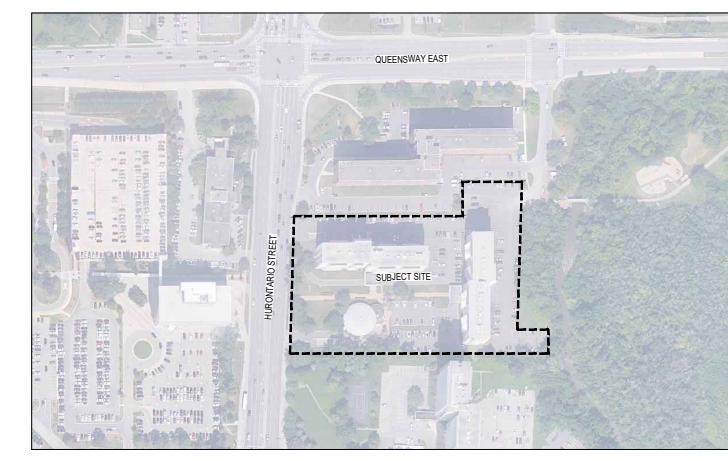
Revisions

1	ISSUED FOR ZBA	2026-04-13	KA
#	ISSUED FOR XXX	YYYY-MM-DD	BY

Stamp



Keymap



Scale
AS SHOWN

Phase
ZBA

North

Drawing Name
LANDSCAPE DETAILS (CITY DETAILS)

Sheet Number
NOT FOR CONSTRUCTION

LD.201