

NOTES:

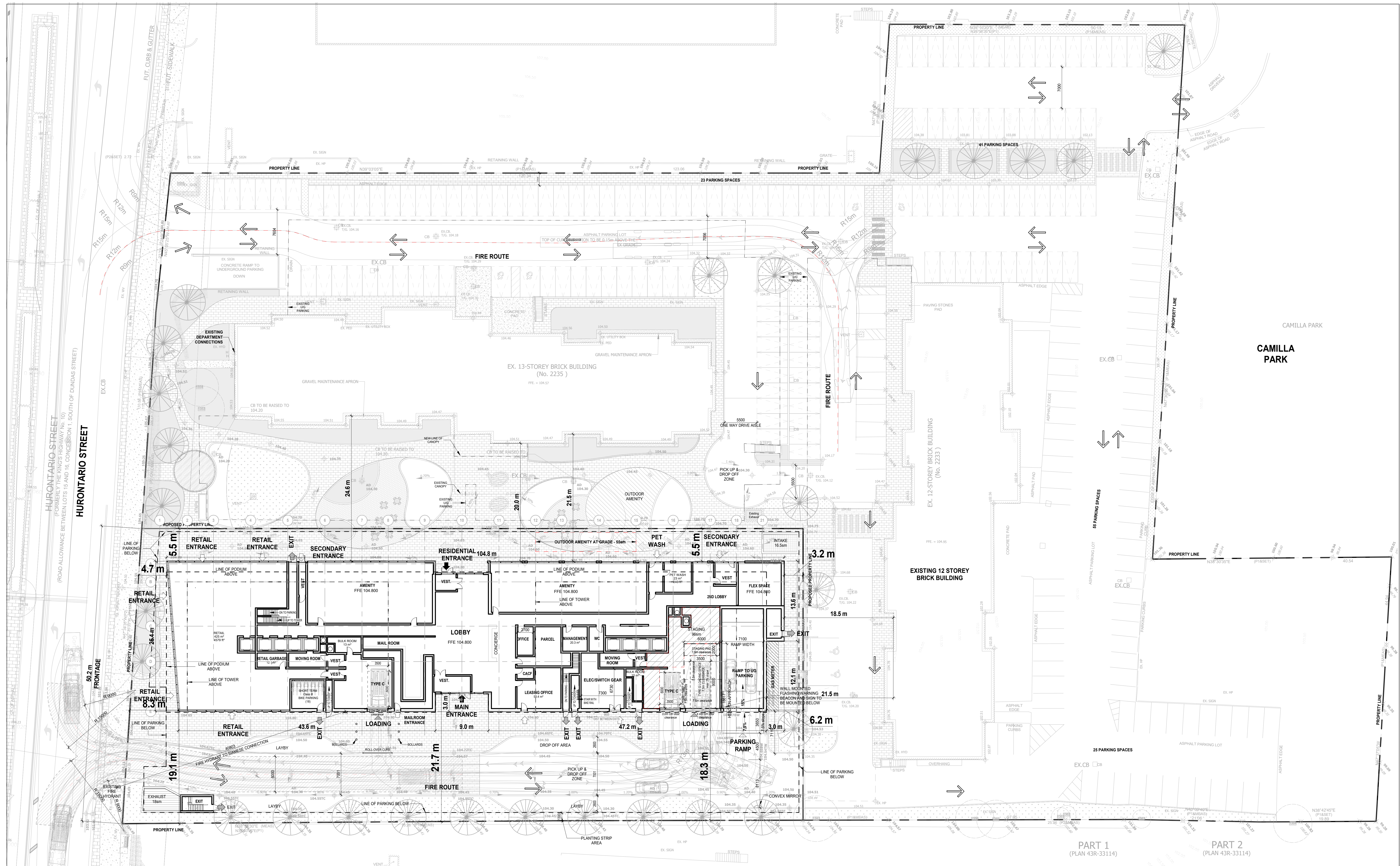
1. ACCESS DESIGN AS PER PEEL REGION 5-1-8 URBAN ENTRANCES
2. LAYBY DESIGN AS PER CITY OF MISSISSAUGA STD 2230.031
3. AS PER MISSISSAUGA ZONING BY-LAW 0225-2007 3.1.1.5.1:
 - 3.1. THE MINIMUM AISLE WIDTH SHALL BE 7.0m.
 - 3.2. THE MINIMUM WIDTH OF PICK UP AND DROP OFF LANS SHALL BE 2.6m.
4. AS PER TAD 9.7.2:
 - 4.1. WHILE CROSSING AT 90 DEGREES IS PREFERABLE IN MOST CASES, IT IS OCCASIONALLY NECESSARY AND EVEN ADVANTAGEOUS TO SKEW THE CROSSING. HOWEVER, ANGLES LESS THAN 70 DEGREES AND GREATER THAN 110 DEGREES ARE TYPICALLY NOT DESIRABLE.

AS PER THE ONTARIO BUILDING CODE 3.2.5

1. 5.5 LOCATION OF ACCESS ROUTES — ACCESS ROUTES SHALL BE LOCATED SO THAT THE PRINCIPAL ENTRANCE AND EVERY ACCESS OPENING ARE LOCATED NOT LESS THAN 3m AND NOT MORE THAN 15m FROM THE CLOSEST PORTION OF THE ACCESS ROUTE
2. 6.1 ACCESS ROUTE DESIGN — A PORTION OF A ROADWAY PROVIDED AS A REQUIRED ACCESS ROUTE FOR FIRE DEPARTMENT USE SHALL:
 - 2.1. 6.1.a HAVE A CLEAR WIDTH NOT LESS THAN 6m
 - 2.2. 6.1.b HAVE A CENTRELINE RADIUS NOT LESS THAN 12m
 - 2.3. 6.1.c HAVE AN OH CLEARANCE OF NOT LESS THAN 5m
 - 2.4. 6.1.d BE CONNECTED WITH A PUBLIC THOROUGHFARE

NOTES: AS PER THE CITY REGION OF PEEL WASTE COLLECTION DESIGN STANDARDS MANUAL (2020):

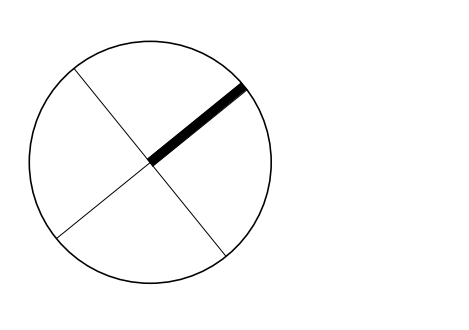
1. ACCESS ROAD — MIN. 6m ROADWAY WIDTH AND MIN. 4.4m CLEAR HEIGHT ALONG ACCESS ROAD.
2. INDOOR WASTE COLLECTION SHOULD HAVE:
 - 2.1. MIN. 18m HEAD-ON APPROACH
 - 2.2. MIN. 6m WIDE CONCRETE PAD AND MIN 7.5m OVERHEAD CLEARANCE
 - 2.3. MIN. 10m² BULKY SET OUT AREA
 - 2.4. MAX 2% SLOPE AT CONCRETE PAD
3. THE WASTE COLLECTION VEHICLE IS NOT PERMITTED TO REVERSE IN EXCESS OF 15m
4. AS PER THE CITY OF MISSISSAUGA ZONING BY-LAW PART 3: REQUIRED LOADING SPACES SHALL HAVE AN UNOBSTRUCTED RECTANGULAR AREA WITH A MINIMUM WIDTH OF 3.5m AND A MINIMUM LENGTH OF 9.0m
5. A TRAINED ON-SITE STAFF MEMBER WILL BE AVAILABLE TO MANUEVER THE GARBAGE BINS FOR THE COLLECTION DRIVER AND ACT AS A FLAGMAN WHEN THE TRUCK IS REVERSING. IN THE EVENT THE ON-SITE STAFF MEMBER IS UNAVAILABLE AT THE TIME THE CITY COLLECTION VEHICLE ARRIVES AT THE SITE, THE COLLECTION VEHICLE WILL LEAVE THE SITE AND NOT RETURN UNTIL THE NEXT SCHEDULED COLLECTION DAY.
6. FLASHING BEACON TO BE ACTIVATED WHEN TRUCKS ENTER AND EXIT THE SITE. THE SYSTEM TO REMAIN ACTIVATED DURING THE DELIVERY AND UNTIL THE TRUCK EXITS THE SITE. WARNING SIGN TO BE MOUNTED BELOW THE FLASHING BEACON.
7. COLLECTION BINS
 - 7.1. NUMBER OF RECYCLE BINS SHOWN IN STAGING AREA IS MEANT TO DENOTE THAT THE SPACE CAN ACCOMMODATE THE NECESSARY NUMBER OF RESIDENTIAL COLLECTION BINS AS PER SECTION 4.
 - 7.2. FOR 568 UNITS, 558/45 = 13 3/4 YD³ BINS ARE REQUIRED (REFER TO APPENDIX 7) — EACH 3-YD³ BIN RESERVES 2m x 3m SPACE. TOTAL STAGING AREA = 78m².
 - 7.3. GARBAGE STAGING AREA CONFIGURATION SUBJECT TO THE APPROVAL OF REGION OF PEEL'S WASTE MANAGEMENT DEPARTMENT.
 - 7.4. REQUIRED STORAGE AREA = # BINS x BIN SIZE + BULKY ITEM STORAGE = (11+31+13) x 2.03m x 1.07m + 10m² = 129.5m².



Date	No.	Description
2026-04-10	ZBA Submission	
2024-12-19	Issued for DARC submission	

REVISION RECORD

ISSUE RECORD



BDP. Quadrangle

Quadrangle Architects Limited
 The Wolf, 8 Spadina Avenue, Suite 2100, Toronto, ON M5V 0S9
 416.598.1340 www.bdpquadrangle.com

2233 Hurontario Street
 for
 2233 Hurontario Street
 for
 2233 & 2235 Hurontario LTD

24031 1 : 250 KCR KCR
 PROJECT SCALE DRAWN REVIEWED

Ground Floor Site Plan

A201.S

Note: This drawing is the property of the Architect and may not be reproduced or used without the expressed consent of the Architect. The Contractor is responsible for checking and verifying all notes and dimensions and shall report all discrepancies to the Architect and obtain verification prior to commencing work.

1 GROUND FLOOR SITE PLAN
 A201.S