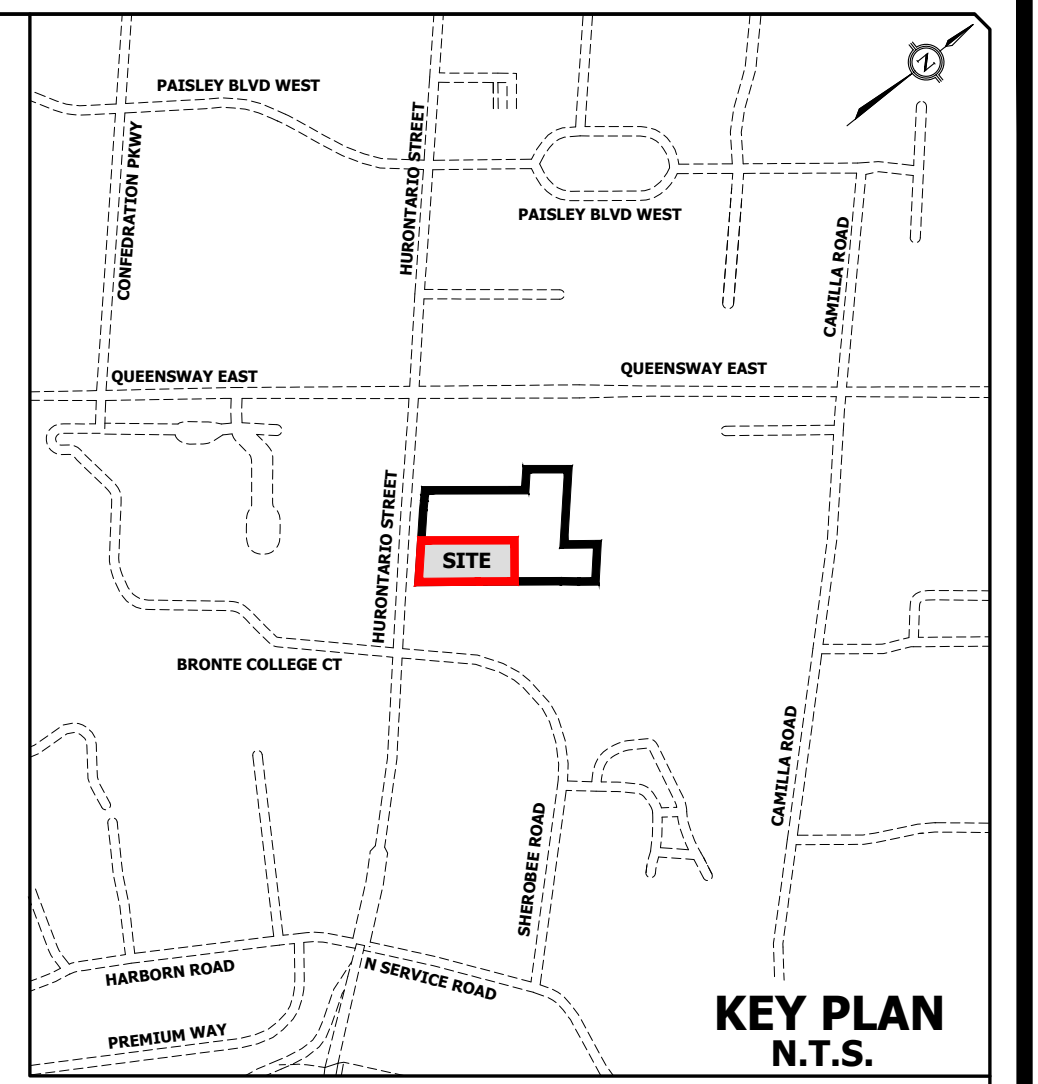
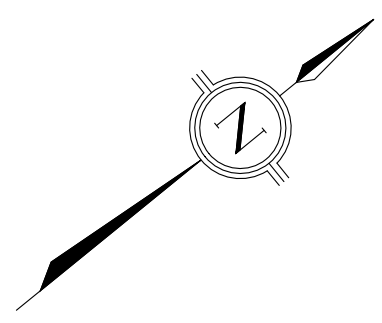
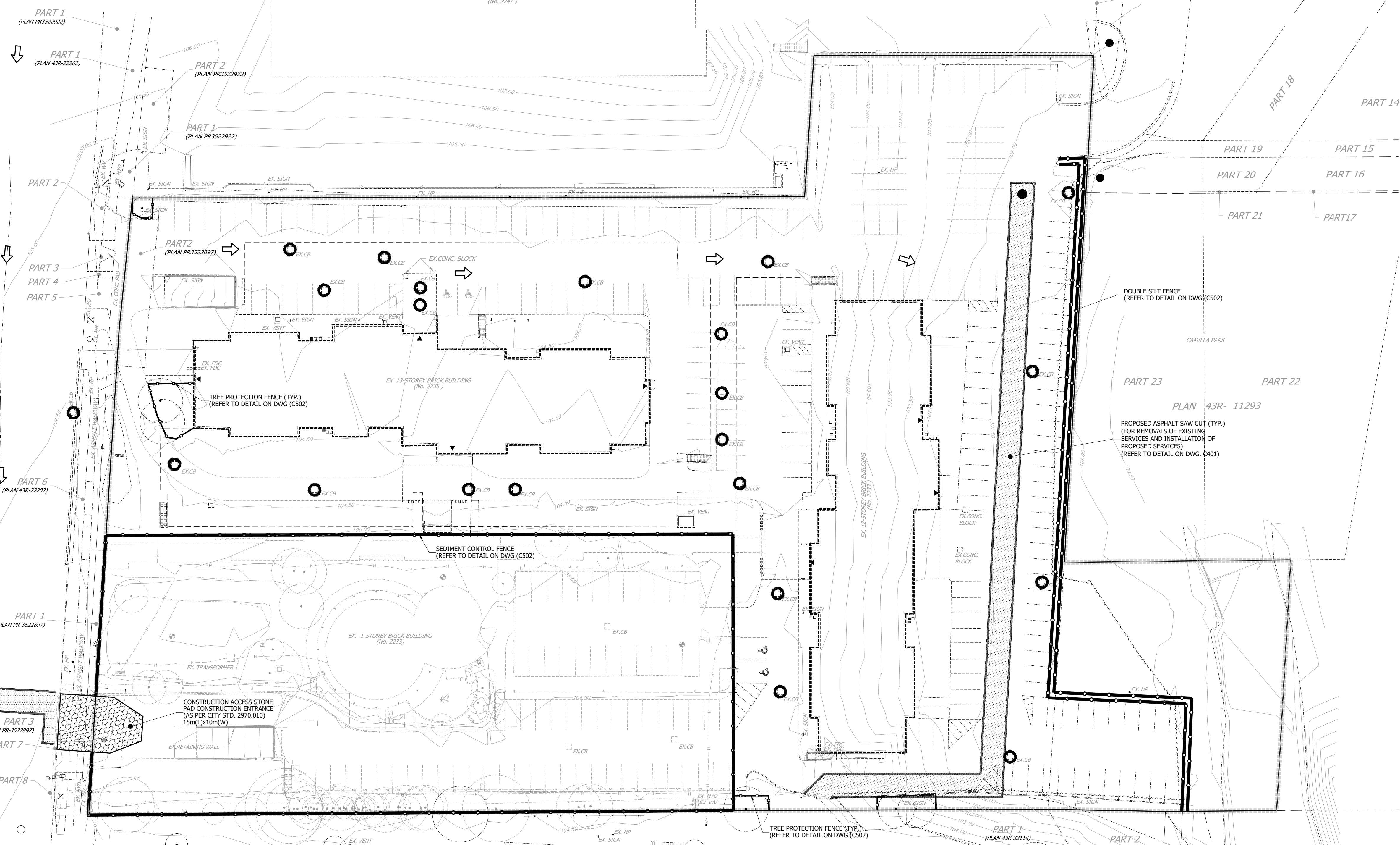


PLOT DATE: April 23, 2026 8:38:51 AM

HURONTARIO STREET



- LEGEND**
- LIMIT OF PROPERTY
 - EXISTING CONTOUR AND ELEVATION
 - EXISTING OVERLAND FLOW DIRECTION
 - PROPOSED SEDIMENT CONTROL FENCE (REFER TO DETAIL ON DWG. C502)
 - PROPOSED TREE PROTECTION FENCE (REFER TO DETAIL ON DWG. C502)
 - PROPOSED ASPHALT SAW CUT (TYP.)
 - EXISTING STORM SEWER
 - EXISTING SANITARY SEWER
 - EXISTING CATCH-BASIN SILT PROTECTION (REFER TO DETAIL ON DWG. C502)
 - EXISTING HYDRANT & VALVE
 - EXISTING VALVE & BOX
 - PROPOSED CONSTRUCTION ACCESS STONE PAD (REFER TO DETAIL ON DWG. C502)
 - EXISTING TREES

ELEVATION NOTE
 ELEVATIONS SHOWN ON THIS PLAN ARE RELATED TO GEODETIC DATUM AND ARE DERIVED FROM THE CITY OF MISSISSAUGA BENCHMARKS:
 NO. 075033035
 ELEVATION=105.608M
 NO. 075185042
 ELEVATION=102.217M

BENCHMARK NOTE
 CUT CROSS ON THE EDGE OF CONCRETE VENT LOCATED NEAR THE NORTHERLY EDGE OF THE PROPERTY OF 2247 HURONTARIO STREET.
 ELEVATION = 105.24m
 TOPOGRAPHIC SURVEY PREPARED BY J.D. BARNES LIMITED, JULY 29, 2024.

No.	ISSUED FOR ZONING	REVISIONS	DATE	BY
1	ISSUED FOR ZONING		APR. 10, 2026	R.B.T.M.



Urbantech® Consulting
 A Division of Leighton-Zec Ltd.
 2030 Bristol Circle, Suite 105
 Oakville, ON, L6H 0H2
 TEL: 905.829.8818 • urbantech.com

2233 & 2235 HURONTARIO LTD.

Region of Peel
 working with you

MISSISSAUGA

EROSION & SEDIMENT CONTROL PLAN

SCALE:	1:400	PROJECT No.	24-326
DRAWN BY:	R.B.	CHECKED BY:	R.M./R.B.T.M
DATE:	MARCH, 2026	SHEET	OF C-XXXXXX
PLAN No.		PLAN No.	C501

FILE: C:\USERS\BIBAR\DOC\PROJECTS\URBANTECH\24-326 2233 HURONTARIO ST\PROJECT FILES\1000 - EROSION\501-ESC PLAN.DWG