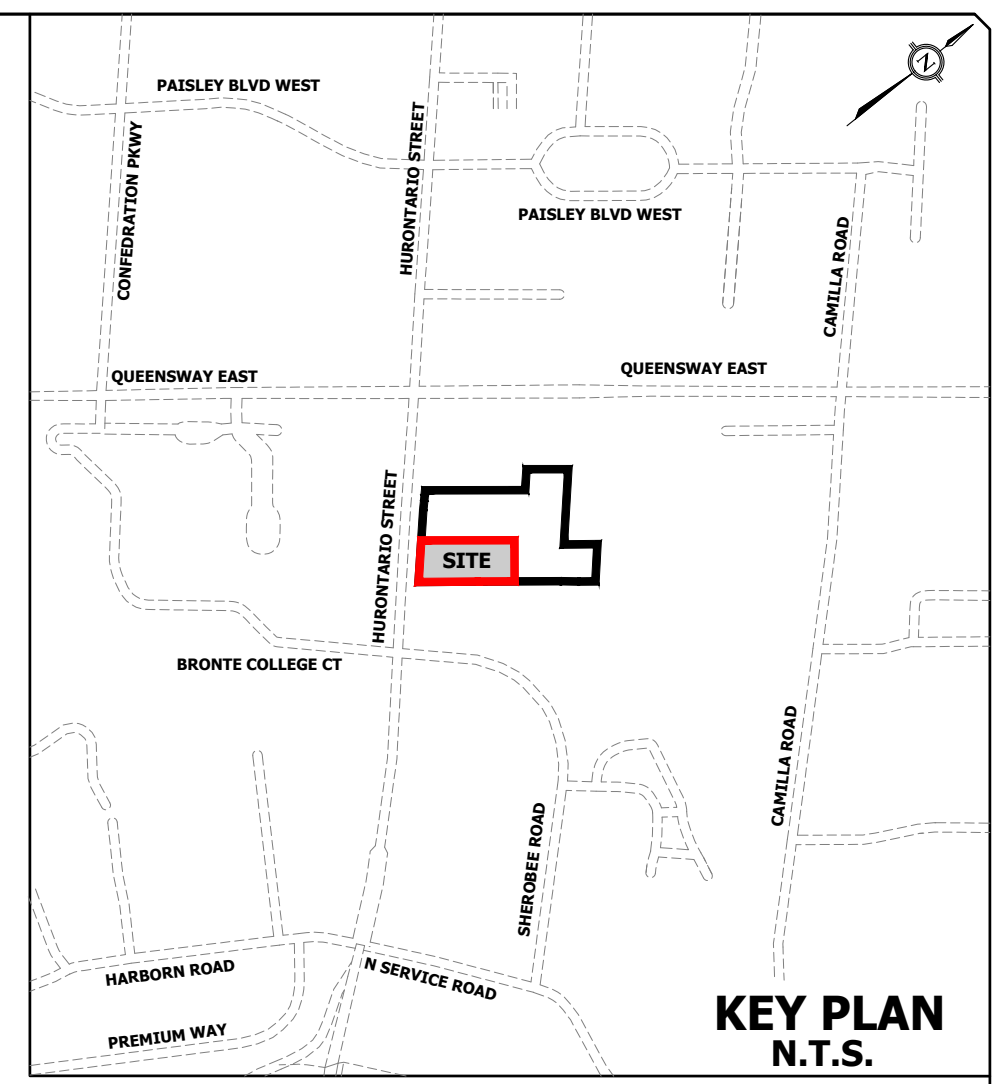
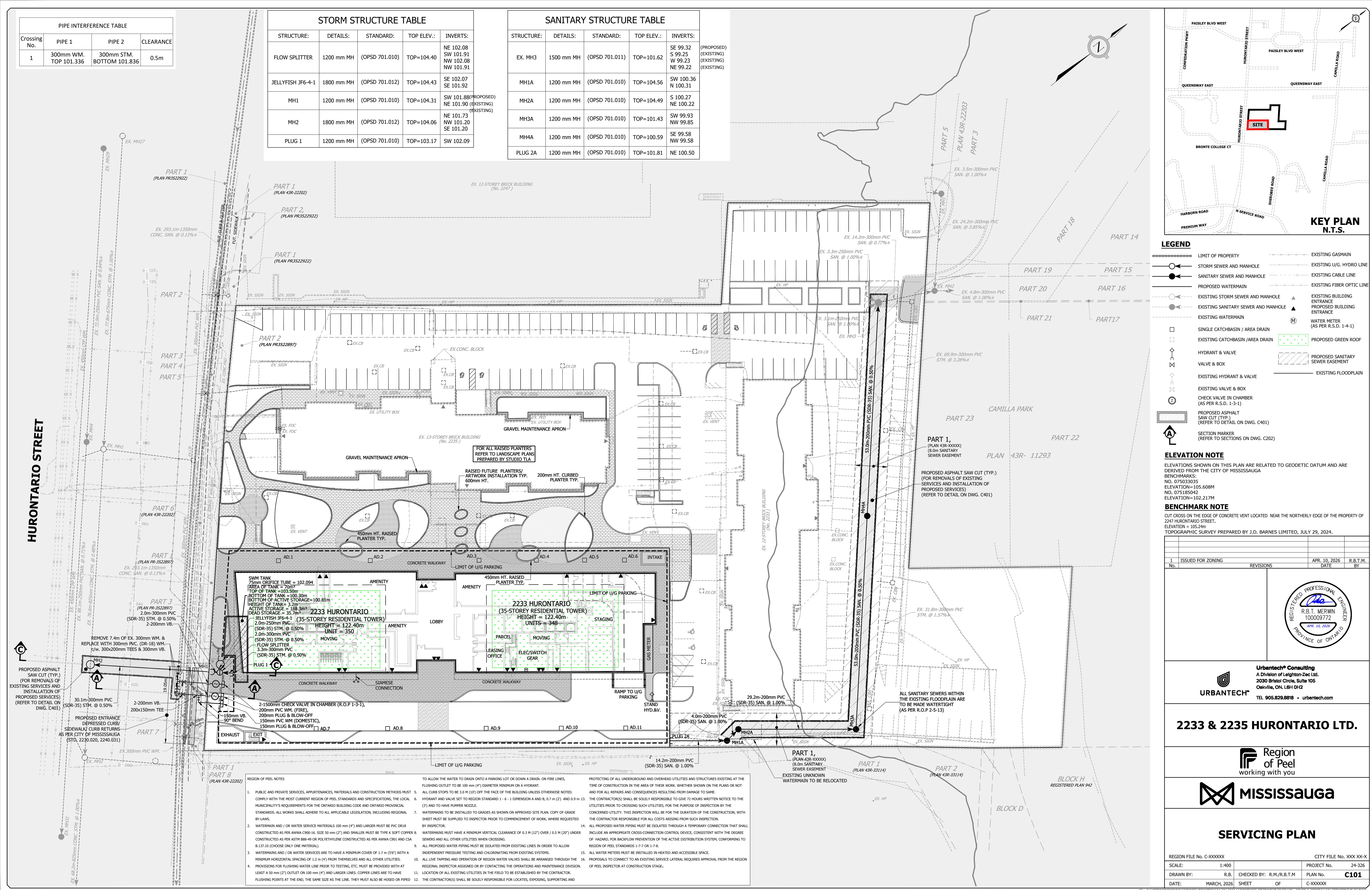


PIPE INTERFERENCE TABLE			
Crossing No.	PIPE 1	PIPE 2	CLEARANCE
1	300mm WM, TOP 101.336	300mm STM, BOTTOM 101.836	0.5m

STORM STRUCTURE TABLE				
STRUCTURE:	DETAILS:	STANDARD:	TOP ELEV.:	INVERTS:
FLOW SPLITTER	1200 mm MH	(OPSD 701.010)	TOP=104.40	NE 102.08 SW 101.91 NW 102.08 NE 99.22
JELLYFISH JF6-4-1	1800 mm MH	(OPSD 701.012)	TOP=104.43	SE 102.07 SE 101.92
MH1	1200 mm MH	(OPSD 701.010)	TOP=104.31	SW 101.88(PROPOSED) NE 101.90 (EXISTING) NE 101.90 (EXISTING)
MH2	1800 mm MH	(OPSD 701.012)	TOP=104.06	NE 101.73 NW 101.20 SE 101.20
PLUG 1	1200 mm MH	(OPSD 701.010)	TOP=103.17	SW 102.09

SANITARY STRUCTURE TABLE				
STRUCTURE:	DETAILS:	STANDARD:	TOP ELEV.:	INVERTS:
EX. MH3	1500 mm MH	(OPSD 701.011)	TOP=101.62	SE 99.32 S 99.25 W 99.23 NE 99.22
MH1A	1200 mm MH	(OPSD 701.010)	TOP=104.56	SW 100.36 N 100.31
MH2A	1200 mm MH	(OPSD 701.010)	TOP=104.49	S 100.27 NE 100.22
MH3A	1200 mm MH	(OPSD 701.010)	TOP=101.43	SW 99.93 NW 99.85
MH4A	1200 mm MH	(OPSD 701.010)	TOP=100.59	SE 99.58 NW 99.58
PLUG 2A	1200 mm MH	(OPSD 701.010)	TOP=101.81	NE 100.50



LEGEND

	LIMIT OF PROPERTY		EXISTING GASMAIN
	STORM SEWER AND MANHOLE		EXISTING U/G HYDRO LINE
	SANITARY SEWER AND MANHOLE		EXISTING CABLE LINE
	PROPOSED WATERMAIN		EXISTING FIBER OPTIC LINE
	EXISTING STORM SEWER AND MANHOLE		EXISTING BUILDING ENTRANCE
	EXISTING WATERMAIN		PROPOSED BUILDING ENTRANCE
	SINGLE CATCHBASIN / AREA DRAIN		WATER METER (AS PER R.S.D. 1-4-1)
	EXISTING CATCHBASIN / AREA DRAIN		PROPOSED GREEN ROOF
	HYDRANT & VALVE		PROPOSED SANITARY SEWER EASEMENT
	VALVE & BOX		EXISTING FLOODPLAIN
	EXISTING HYDRANT & VALVE		
	EXISTING VALVE & BOX		
	CHECK VALVE IN CHAMBER (AS PER R.S.D. 1-3-1)		
	PROPOSED ASPHALT SAW CUT (TYP.) (REFER TO DETAIL ON DWG. C401)		
	SECTION MARKER (REFER TO SECTIONS ON DWG. C202)		

ELEVATION NOTE
 ELEVATIONS SHOWN ON THIS PLAN ARE RELATED TO GEODETIC DATUM AND ARE DERIVED FROM THE CITY OF MISSISSAUGA BENCHMARKS:
 NO. 075033035
 ELEVATION=105.608M
 NO. 075185042
 ELEVATION=102.217M

BENCHMARK NOTE
 CUT CROSS ON THE EDGE OF CONCRETE VENT LOCATED NEAR THE NORTHERLY EDGE OF THE PROPERTY OF 2247 HURONTARIO STREET.
 ELEVATION = 105.24m
 TOPOGRAPHIC SURVEY PREPARED BY J.D. BARNES LIMITED, JULY 29, 2024.

No.	ISSUED FOR ZONING	REVISIONS	DATE	R.B.T.M. BY
1	ISSUED FOR ZONING		APR. 10, 2026	R.B.T.M.



Urbantech Consulting
 A Division of Leighton-Zec Ltd.
 2030 Bristol Circle, Suite 105
 Oakville, ON L6H 0H2
 TEL: 905.829.8818 • urbantech.com

2233 & 2235 HURONTARIO LTD.



SERVICING PLAN

REGION FILE NO. C-XXXXXX	CITY FILE NO. XXX-XX-X
SCALE: 1:400	PROJECT No. 24-326
DRAWN BY: R.B.	CHECKED BY: R.M./R.B.T.M
DATE: MARCH, 2026	PLAN No. C101
SHEET OF	C-XXXXXX

PLOT DATE: April 23, 2026 8:38:51 AM