

PLOT DATE: April 23, 2026 8:38:58 AM

HURONTARIO STREET

PART 1 (PLAN PR3522922)  
 PART 1 (PLAN 43R-22202)  
 PART 2 (PLAN PR3522922)  
 PART 1 (PLAN PR3522922)  
 PART 2  
 PART 3  
 PART 4  
 PART 5  
 PART 6 (PLAN 43R-22202)  
 PART 1 (PLAN PR-3522897)  
 PART 3 (PLAN PR-3522897)  
 PART 7  
 PART 8 (PLAN 43R-22202)  
 PART 1

EX. 293.1m-1350mm CONC. SAN. @ 0.13%±

EX. 293.1m-1350mm CONC. SAN. @ 0.13%±

EX. 98.1m-250mm PVC SAN. @ 0.17%±

EX. 14.2m-200mm PVC (SDR-35) SAN. @ 1.00%±

EX. 4.0m-200mm PVC (SDR-35) SAN. @ 1.00%±

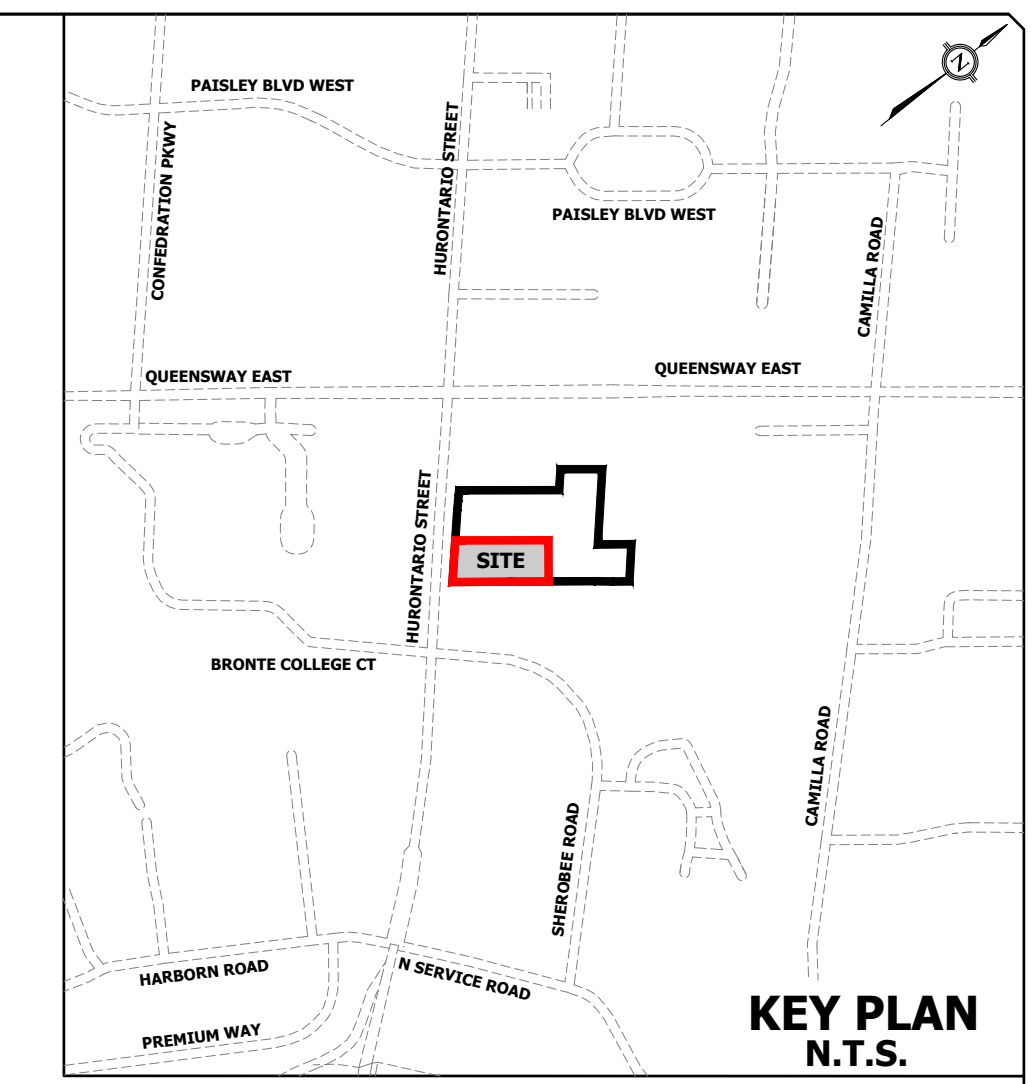
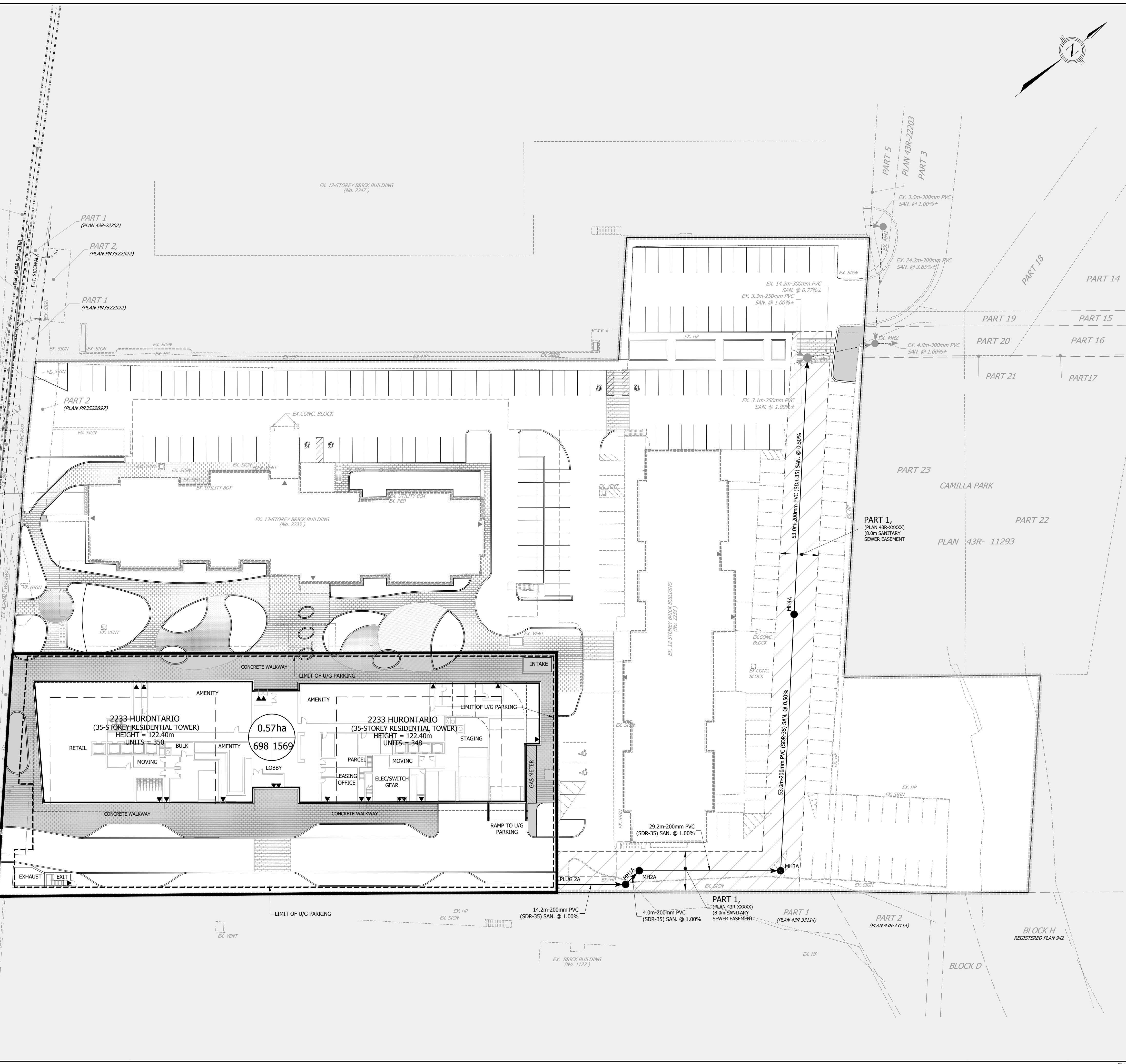
EX. 29.2m-200mm PVC (SDR-35) SAN. @ 1.00%±

EX. 33.0m-200mm PVC (SDR-35) SAN. @ 0.50%±

EX. 33.0m-200mm PVC (SDR-35) SAN. @ 0.50%±

EX. 33.0m-200mm PVC (SDR-35) SAN. @ 0.50%±

EX. 33.0m-200mm PVC (SDR-35) SAN. @ 0.50%±



- LEGEND**
- LIMIT OF PROPERTY
  - SANITARY SEWER AND MANHOLE
  - EXISTING SANITARY SEWER AND MANHOLE
  - ▲ PROPOSED BUILDING ENTRANCE
  - ▲ EXISTING BUILDING ENTRANCE
  - 0.57ha DRAINAGE AREA (Ha.)
  - 698 1569 POPULATION
  - # OF UNITS / OR POPULATION PER HECTARE (p./Ha.)
  - SANITARY DRAINAGE AREA BOUNDARY
  - ▨ PROPOSED SANITARY SEWER EASEMENT

**ELEVATION NOTE**  
 ELEVATIONS SHOWN ON THIS PLAN ARE RELATED TO GEODETIC DATUM AND ARE DERIVED FROM THE CITY OF MISSISSAUGA BENCHMARKS:  
 NO. 075033035  
 ELEVATION = 105.608M  
 NO. 075185042  
 ELEVATION = 102.217M

**BENCHMARK NOTE**  
 CUT CROSS ON THE EDGE OF CONCRETE VENT LOCATED NEAR THE NORTHERLY EDGE OF THE PROPERTY OF 2247 HURONTARIO STREET.  
 ELEVATION = 105.24m  
 TOPOGRAPHIC SURVEY PREPARED BY J.D. BARNES LIMITED, JULY 29, 2024.

1	ISSUED FOR ZONING	APR. 10, 2026	R.B.T.M.
No.	REVISIONS	DATE	BY



**URBANTECH® Consulting**  
 A Division of Leighton-Zec Ltd.  
 2030 Bristol Circle, Suite 105  
 Oakville, ON, L6H 0H2  
 TEL: 905.829.8818 • urbantech.com

**2233 & 2235 HURONTARIO LTD.**

Region of Peel  
 working with you



**SANITARY DRAINAGE PLAN**

REGION FILE No. C-XXXXXX	CITY FILE No. XXX-XX-X
SCALE:	PROJECT No. 24-326
DRAWN BY: R.B.	CHECKED BY: R.M./R.B.T.M.
DATE: MARCH, 2026	PLAN No. C302
SHEET OF	C-XXXXXX

File: C:\USERS\RBARNER\PROJECTS\URBANTECH\24-326-2233 HURONTARIO ST\PROJECT FILES\300 - DRAINAGE\302 SANITARY DRAINAGE PLAN.DWG