

LANDSCAPE PLAN B
1:250

Existing tree to remain (typ.)

Existing ramp to remain

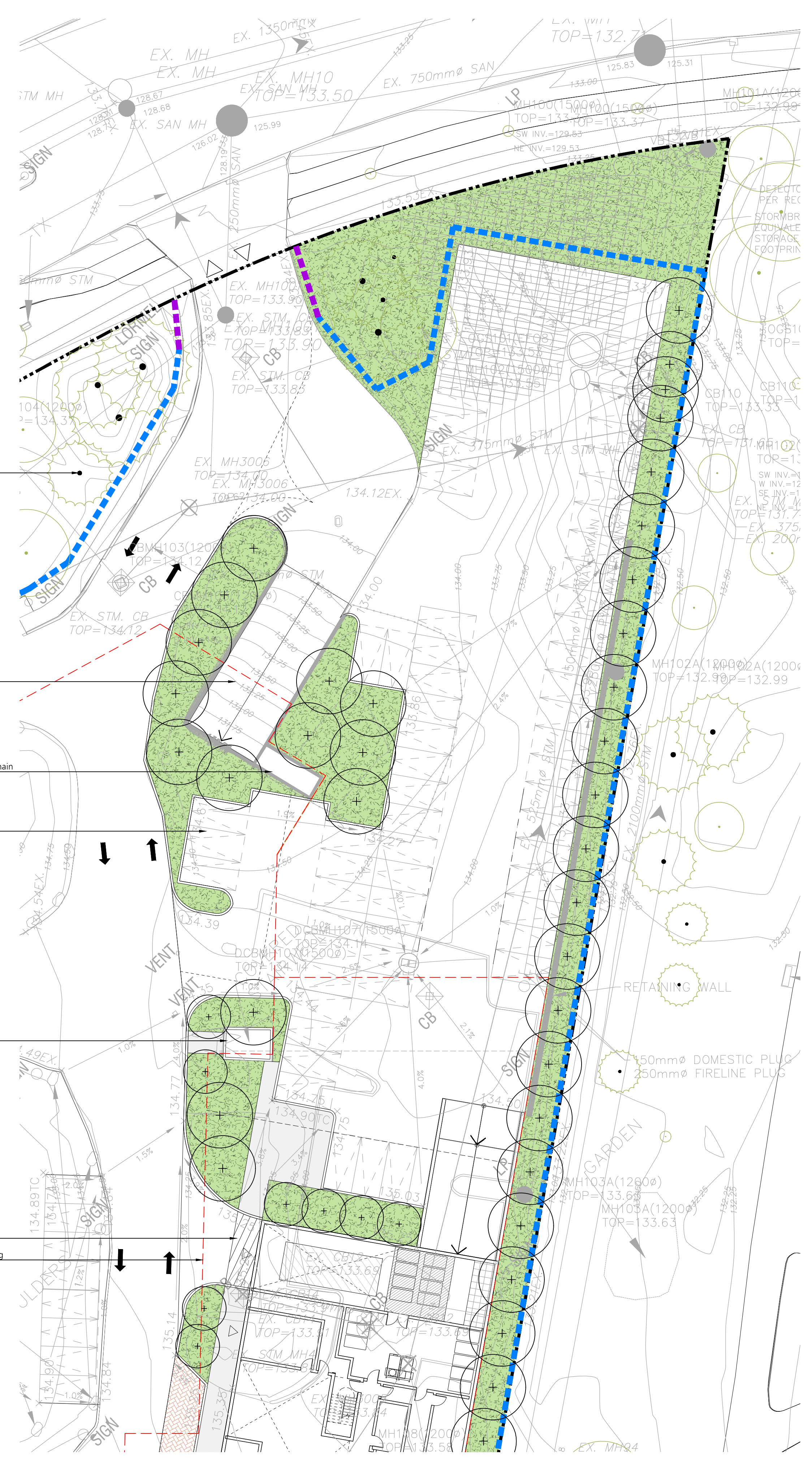
Existing vent chamber to remain

Proposed parking spaces.
Refer to Arch. drawings

Existing building 'A' stair enclosure to remain

Proposed crosswalk location

Limit of underground parking



LEGEND

- Property Line
- Limit of Work
- Decorative Metal Fence
- Chain Link Screen Fence
- Solid Tree Protection Hoarding
- Framed Tree Protection Hoarding
- Existing Trees to Remain
- Proposed Deciduous Tree
- Planting Area
- Sod
- Concrete Paving
- Asphalt Paving
- Vehicular Unit Paving

Note: All Drawings by Baker Turner inc. to be Printed in Colour.

REVISIONS

DATE	DESCRIPTION
22 Dec. 25	Issued for OPA/RZA Submission
03 Dec. 25	Issued for OPA/RZA Submission
21 Nov. 25	Issued for Coordination

NOTE: Contractor is to check and verify all dimensions and conditions on the project, and is to immediately report any discrepancies to the landscape architect before proceeding with the work.

ASSOCIATION OF LANDSCAPE ARCHITECTS OF ONTARIO (ALA)

BTi
Baker Turner Inc.

Landscape Architecture | Site Design

Suite 200, 2nd floor
2010 Winston Park Drive
Oakville Ontario L6H 5R7
tel: (289) 291-7620
web: www.bakerturner.com
email: tbs@bakerturner.com

Project Title
Forest Park Circle
Forest Park Circle - Phase 2
4100 Ponytrail Drive & 1850 Rathburn Road East
Mississauga, ON
Landscape Plan B

Date	Issued
October 2025	

Job Number	Drawn By
BTI-1801	DT

Scale	Checked By
1:250	SB

Sheet Number	File Number
L002	

2025/10/01 10:00 AM - Forest Park Circle - OPA/RZA Submission - Drawing (BTI-1801-1) (1:250) (Phase 2)