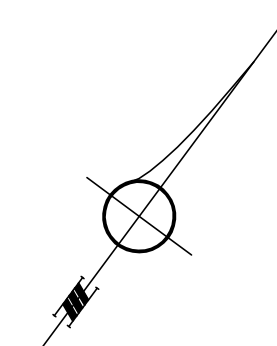
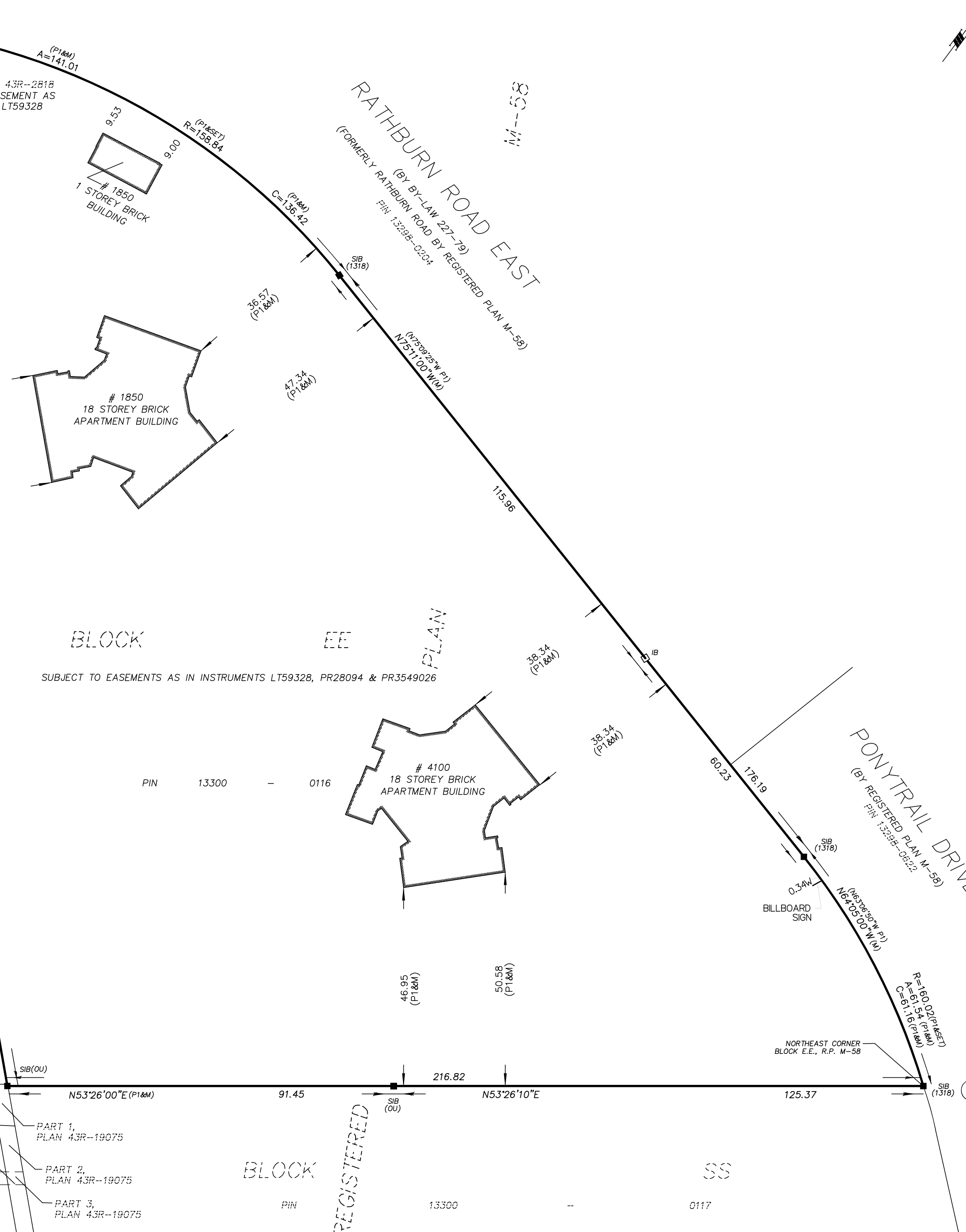


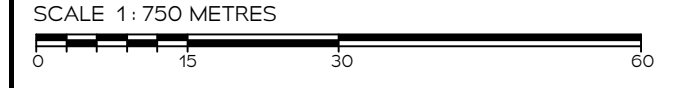
RATHBURN ROAD EAST
 (RENAMED BY BY-LAW 226-79
 INSTRUMENT 528548)
 (DEDICATED AS A PUBLIC HIGHWAY BY
 BY-LAW 264-76, INSTRUMENT VS394391)
 PIN 13380-0203
 PART 2, PLAN 43R-2639

LOT 2,
 PIN 133500

PART 1,
 N46°30'10"W
 112.45
 35.00 (P1&M)
 35.02 (P1&M)
 256.43
 N46°30'40"W
 43.38
 1307.4
 142.98
 SIB (1318)
 SIB (1318)
 SIB (OU)
 N53°26'00"E (P1&M)
 91.45
 N53°26'10"E
 125.37
 SIB (OU)
 PART 1, PLAN 43R-2431
 SUBJECT TO EASEMENT
 AS IN INSTRUMENT VS384 722
 PART 1, PLAN 43R-19075
 PART 2, PLAN 43R-19075
 PART 3, PLAN 43R-19075
 N.D.S.
 0115



COPYRIGHT © IBW SURVEYORS LTD. 2025
 PLAN OF SURVEY OF
BLOCK EE,
REGISTERED PLAN M-58
 CITY OF MISSISSAUGA
 REGIONAL MUNICIPALITY OF PEEL



BEARING NOTE
 BEARINGS ARE UTM GRID, DERIVED FROM OBSERVED REFERENCE POINTS A AND B, BY REAL TIME NETWORK OBSERVATIONS, UTM ZONE 17 (81° WEST LONGITUDE), NAD83(CSR5),7(2010).

DISTANCE NOTES - METRIC
 DISTANCES AND COORDINATES ARE IN METRES AND CAN BE CONVERTED TO FEET BY DIVIDING BY 0.3048.
 DISTANCES ARE GROUND AND CAN BE CONVERTED TO GRID BY MULTIPLYING BY THE COMBINED SCALE FACTOR OF 0.999742.

LEGEND

- DENOTES SURVEY MONUMENT FOUND
- DENOTES SURVEY MONUMENT SET
- SIB DENOTES STANDARD IRON BAR
- IB DENOTES IRON BAR
- M DENOTES MEASURED
- P1 DENOTES SURVEY BY HUNT SURVEYS INC., O.L.S. DATED JANUARY 12, 2012 (#66200)
- 1318 DENOTES JOSEPH RADY-PENTEK, O.L.S.
- OU DENOTES ORIGIN UNKNOWN

BUILDING TIES SHOWN HEREON ARE TO THE FOUNDATION UNLESS OTHERWISE NOTED.

SURVEYOR'S CERTIFICATE
 I CERTIFY THAT:

- THIS SURVEY AND PLAN ARE CORRECT AND IN ACCORDANCE WITH THE SURVEYS ACT AND THE SURVEYORS ACT AND THE REGULATIONS MADE UNDER THEM.
- THE SURVEY WAS COMPLETED ON JULY 30, 2025.

AUGUST 18, 2025
 DATE
 ANDREJS LUCIKS, O.L.S.

THIS PLAN OF SURVEY RELATES TO AOLS PLAN SUBMISSION FORM NUMBER V-114637

INTEGRATION DATA

OBSERVED REFERENCE POINTS DERIVED FROM GPS OBSERVATIONS USING A REAL TIME NETWORK AND ARE REFERRED TO UTM ZONE 17 (81° WEST LONGITUDE) NAD83(CSR5),7(2010).
 URBAN ACCURACY PER SEC. 14(2), O.REG. 216/10.

POINT ID	NORTHING	EASTING
A	4832306.13	613096.18
B	4832259.50	613455.54

CAUTION: COORDINATES CANNOT, IN THEMSELVES, BE USED TO RE-ESTABLISH CORNERS OR BOUNDARIES SHOWN ON THIS PLAN

IBWSURVEYORS.COM | 1.800.667.0696
copies available at ProtectYourBoundaries.ca

PARTY CHIEF-DG	DRAWN-MF	CHECKED-AL	PLOT DATE-AUGUST 18, 2025	A-055119
FILE A-055119-F05-V4				