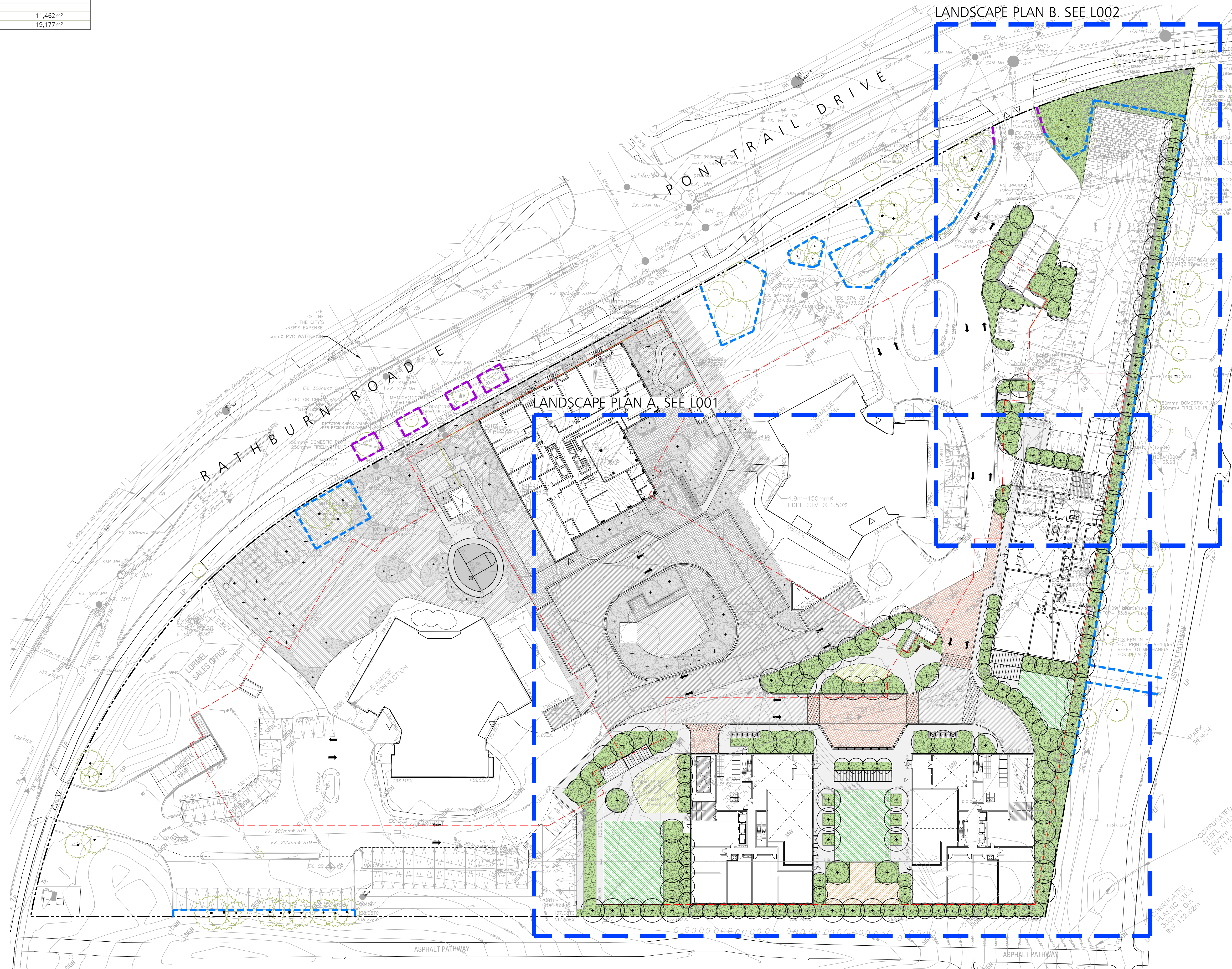


**AREA CALCULATIONS**

SURFACE TYPE	AREA
Limit of Work	37,489.32m <sup>2</sup>
Proposed Outdoor Amenity 1	841.00m <sup>2</sup>
Proposed Outdoor Amenity 2	534.00m <sup>2</sup>
Proposed Outdoor Amenity 3	550.00m <sup>2</sup>
Total Hardscape	11,462m <sup>2</sup>
Total Softscape	19,177m <sup>2</sup>

**KEY MAP**

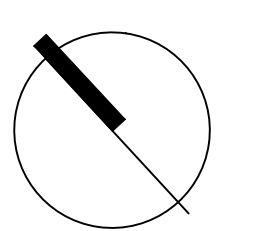


Note: All Drawings by Baker Turner inc. to be Printed in Colour.

**REVISIONS**

DATE	DESCRIPTION
22 Dec. 25	Issued for OPA/RZA Submission
03 Dec. 25	Issued for OPA/RZA Submission
21 Nov. 25	Issued for Coordination

NOTE: Contractor is to check and verify all dimensions and conditions on the project, and is to immediately report any discrepancies to the landscape architect before proceeding with the work.



Landscape Architecture | Site Design  
 Suite 200, 2nd floor  
 2010 Winston Park Drive  
 Oakville Ontario L6H 5R7  
 Tel: (289) 291-7620  
 Web: www.bakerturner.com  
 Email: tbs@bakerturner.com

**Project Title**  
 Forest Park Circle  
 Forest Park Circle - Phase 2  
 4100 Ponytrail Drive & 1850 Rathburn Road East  
 Mississauga, ON  
**Context Plan**

Date	Issued
October 2025	
Job Number	Drawn By
BTI-1801	DA, DT
Scale	Checked By
1:500	SB
Sheet Number	File Number
L000	