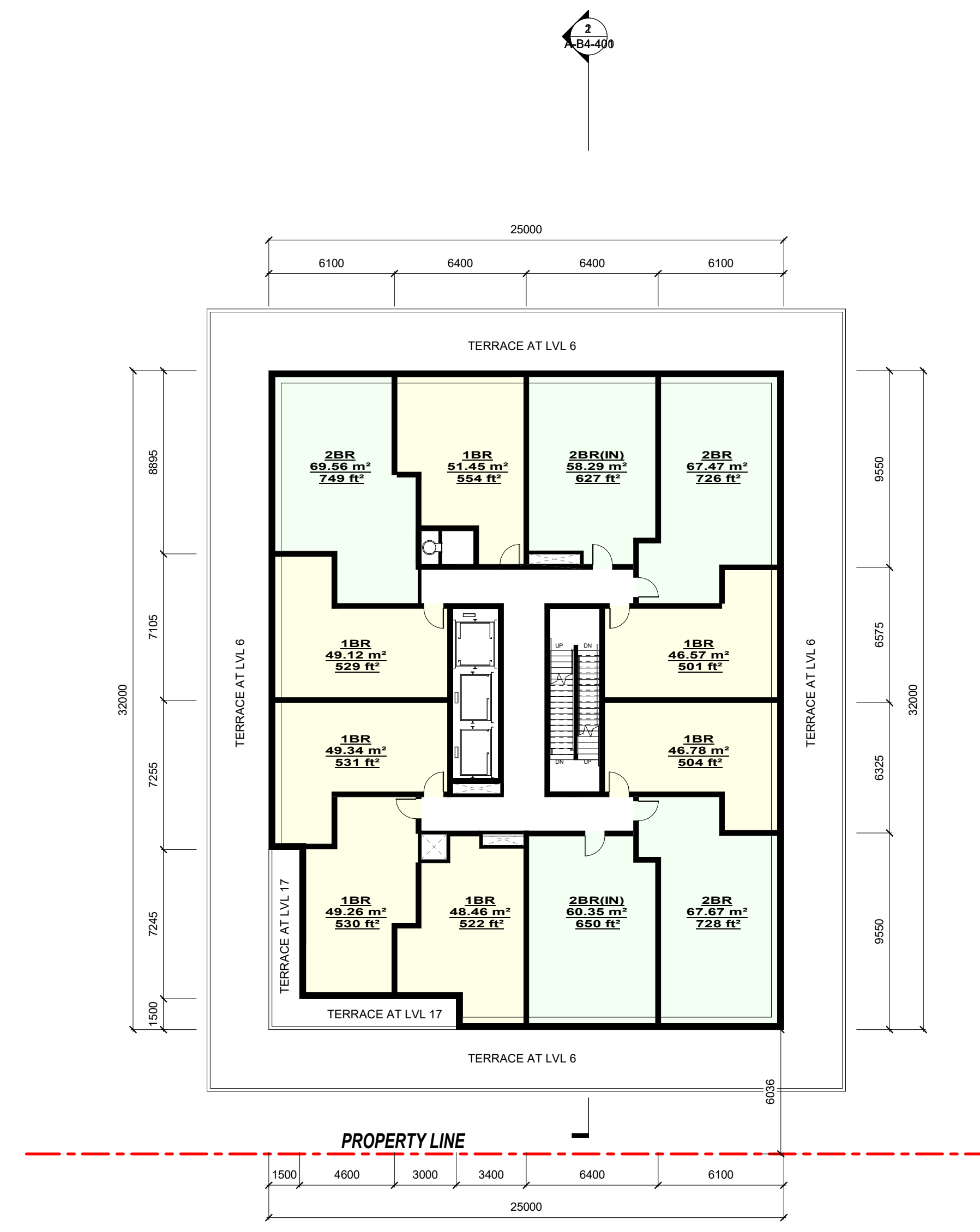


APPLICATION NUMBER:

APPLICATION NUMBER:

DRAWINGS ARE NOT TO BE SCALED.
NOTES:
 THIS DRAWING IS AN INSTRUMENT OF SERVICE, IS PROVIDED BY AND IS THE PROPERTY OF 4 ARCHITECTURE INC.
 THE CONTRACTOR MUST VERIFY AND ACCEPT RESPONSIBILITY FOR ALL DIMENSIONS AND CONDITIONS ON SITE AND MUST NOTIFY 4 ARCHITECTURE INC. OF ANY VARIATION FROM THE SUPPLIED INFORMATION.
 4 ARCHITECTURE INC. IS NOT RESPONSIBLE FOR THE ACCURACY OF SURVEY, STRUCTURAL, MECHANICAL, ELECTRICAL, ETC. ENGINEERING INFORMATION SHOWN ON THIS DRAWING. REFER TO THE PROPER ENGINEERING DRAWINGS BEFORE PROCEEDING WITH THE WORK.
 CONSTRUCTION MUST CONFORM TO ALL APPLICABLE CODES AND REQUIREMENTS OF AUTHORITIES HAVING JURISDICTION.
 ALL ARCHITECTURAL SYMBOLS INDICATED ARE GRAPHIC REPRESENTATIONS ONLY.

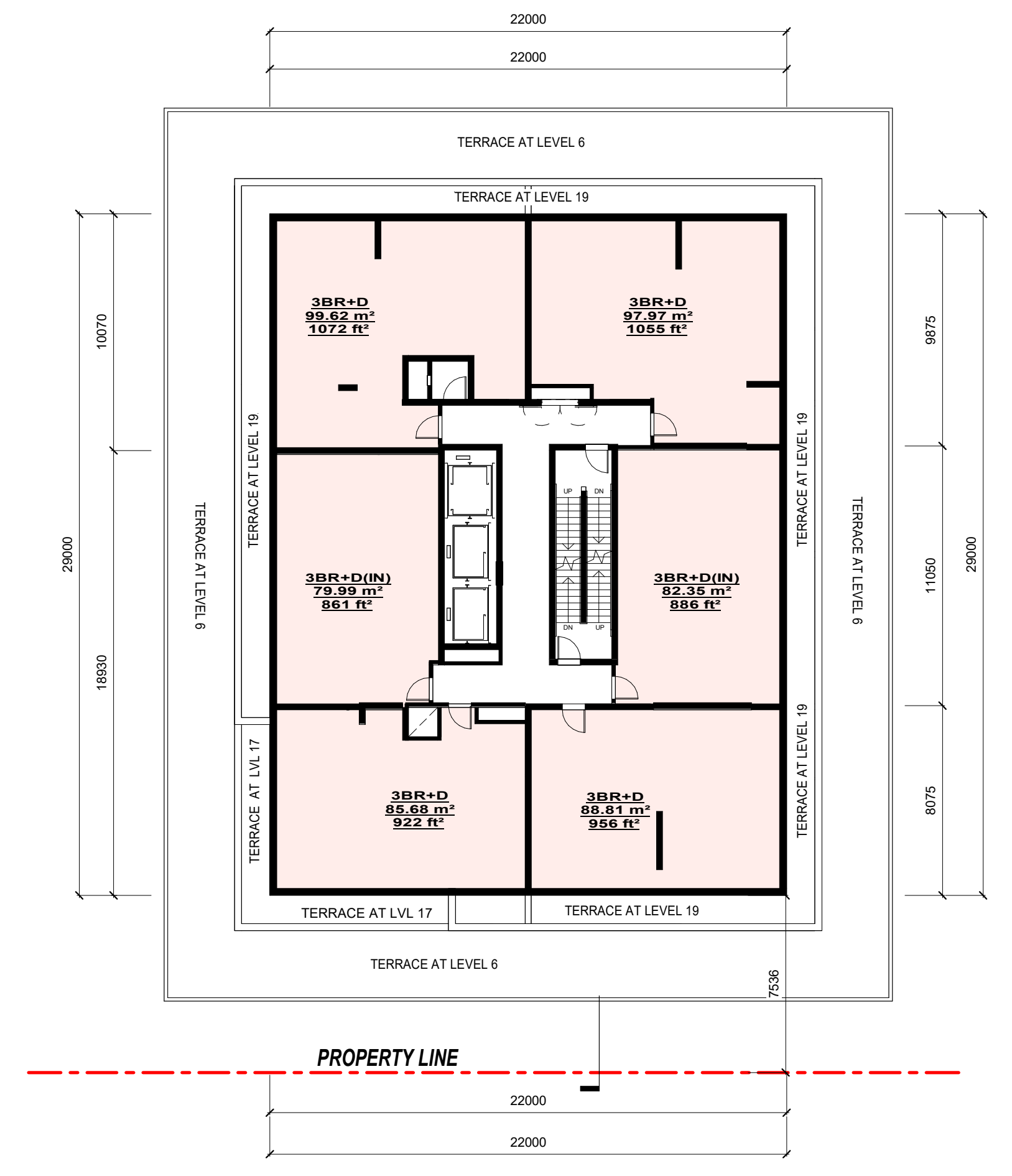


1 LEVEL 17-18
1 : 200

LEVEL 17-18 (TYP) - UNIT COUNT	
Name	Count
1BR	7
2BR	3
2BR(IN)	2
Grand total:	12

LEVEL 17-18 (TYP) - UNIT SCHEDULE	
Name	Area
1BR	51.45 m²
1BR	46.57 m²
1BR	49.12 m²
1BR	49.34 m²
1BR	46.78 m²
1BR	49.26 m²
1BR	48.46 m²
2BR	69.56 m²
2BR	67.47 m²
2BR	67.67 m²
2BR(IN)	58.29 m²
2BR(IN)	60.35 m²
Grand total:	664.31 m²

TOTAL = 12 UNITS

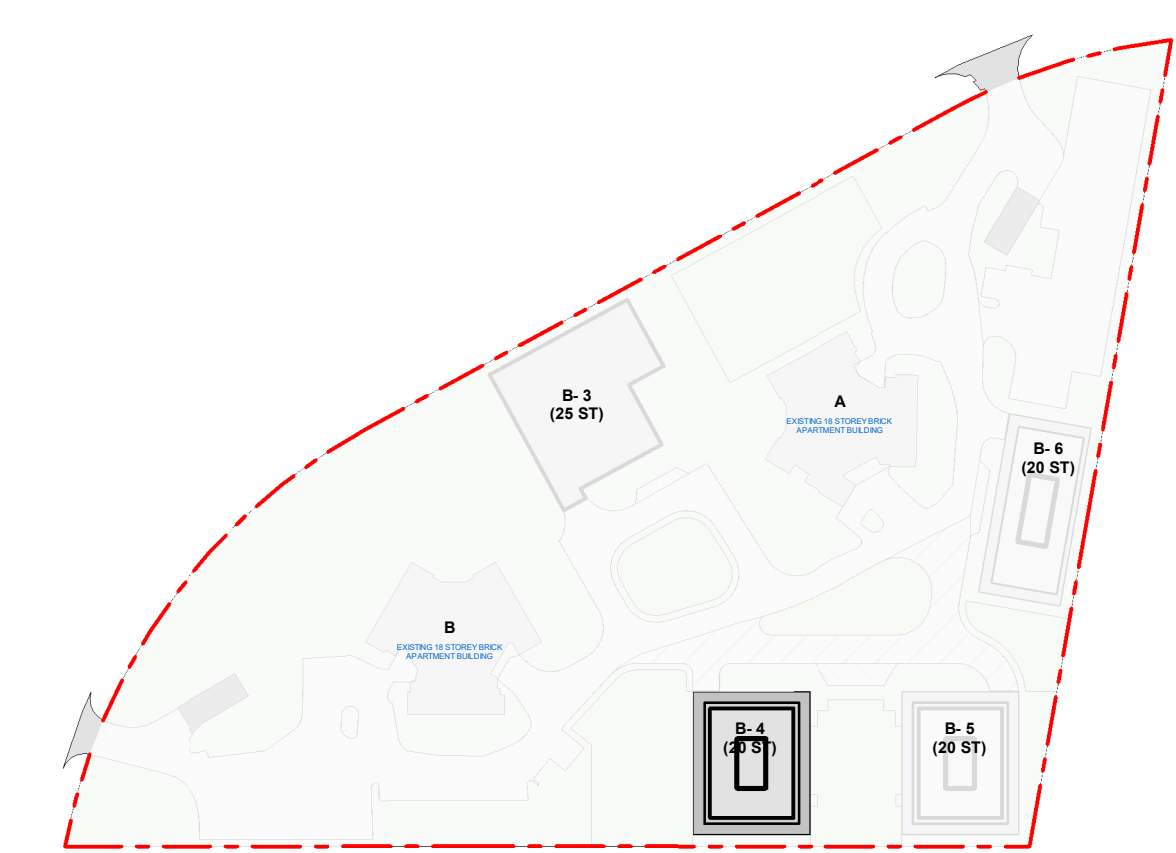


2 LEVEL 19-20
1 : 200

LEVEL 19-20 (TYP) UNIT COUNT	
Name	Unit Count
3BR	0
3BR+D	6
3BR+D(IN)	0
Grand Total	6

LEVEL 19-20 (TYP) UNIT SCHEDULE	
Name	Unit Count
3BR+D	83.20 m²
3BR+D	88.81 m²
3BR+D	97.97 m²
3BR+D	99.64 m²
3BR+D	82.35 m²
3BR+D	82.44 m²
Grand Total:	534.41 m²

TOTAL = 6 UNITS



REVISIONS	
No.	Description

SUBMITTALS	
No.	Description

CLIENT:	
No.	Description
1.	ISSUED FOR ZBA SUBMISSION

4 ARCHITECTURE INC.
 8966 Woodbine Avenue, Suite 300, Markham, ON L3R 0J7
 T: (905) 470 7212 // email: mail@4architecture.ca

FOREST PARK CIRCLE - 425030
 4100 PONYTRAIL DRIVE, MISSISSAUGA, ON

TYPICAL 17-18, 19-20 FLOOR PLANS
 2025.12.19

As indicated
 SVIDS
 EM
A-B4-305