

City of Mississauga

Briefing Note



Date: 2026/06/02

To: Councillor Alvin Tedjo
Ward 2

From: Emma Calvert
Director, Infrastructure Planning and Engineering Services

Colin Patterson
Director, Traffic Management and Municipal Parking

Carolyn Ryall
Director, Rapid Transit Program Office

Subject: 2026 Roads and Stormwater Capital Plan for Ward 2

The purpose of this briefing note is to provide an overview of the roads and stormwater projects planned for Ward 2 in 2026. These projects are also illustrated on the attached Ward 2 Roads and Stormwater Capital Plan Map.

Roads Projects

The Roads Capital Plan includes roadway rehabilitation, major road improvements, integrated roads projects, bridge and culvert renewal, cycling infrastructure and sidewalk improvements, noise wall replacements and upgrades, intersection improvements, rapid transit studies, road safety projects, traffic signal modernization and the installation of new signals, streetlight replacements, and environmental site management projects.

Roadway Rehabilitation

The Roadway Rehabilitation program is focused on the renewal of the pavement, curb and sidewalk infrastructure within the roadway. Pavement renewal can range from resurfacing to full reconstruction of the roadway. The curbs and sidewalks may also be replaced as part of the rehabilitation project if warranted by their condition. These projects are prioritized based on city-wide needs and are coordinated with other City projects, the Region of Peel, utility companies and development pressures to the extent possible and practical. The approved 2026 city-wide budget for roadway rehabilitation is \$15.6 million. With the streets carried over from 2025, this

year's construction program includes approximately 25.9 centreline km of road surface, affecting 48 streets across the city. The table below summarizes the streets planned for rehabilitation in Ward 2 this year.

Street Name	From	To
*Atoka Drive	Mississauga Road	Road End
Birch Crescent	Benedet Drive	Benedet Drive
Poplar Crescent	Benedet Drive	Benedet Drive
*Southdown Road	Wiseman Court	South Sheridan Way
Total	4 Streets	2.7 km

*Indicates projects that are carried over from previous years.

Major Roads Improvements

The Major Roads Improvement program includes studies, designs and construction projects which lead to new roads, road widenings, multi-modal integrations, grade separations from railway corridors, and other improvements to the major roads network. Typically, a Municipal Class Environmental Assessment (EA) Study is completed for each project prior to proceeding to the detailed design and construction phases. There are no major road improvement projects planned in Ward 2 this year.

Integrated Roads Projects

The Integrated Roads Program seeks to improve the coordination of City roads projects and reduce construction costs and nuisance/fatigue for residents by bundling planned improvements and renewals into a single construction project. Integrated Roads Projects include a complete streets approach to the planning and design of various planned road works that may include pavement and structure rehabilitation, as well as pedestrian and cycling, transit, street lighting, safety, noise wall, drainage and other roadway infrastructure improvements. There are no Integrated Roads Projects planned in Ward 2 this year.

Bridge, Culvert and Retaining Wall Renewals

The Bridge, Culvert and Retaining Wall program focuses on structural rehabilitations and replacements. For structures over watercourses, the Stormwater Team is consulted on needs or opportunities for hydraulic improvements to reduce flooding risks. The following table summarizes the projects planned in Ward 2 this year.

Project Location	Project Type	Phase
009004 – Birchview Drive over Lornewood Creek Culvert	Culvert Replacement	Detailed Design & Construction
009005 – Birchview Drive over East branch of Lornewood Creek Culvert	Culvert Replacement	Detailed Design & Construction
009006 – Indian Road over Tecumseh Creek	Culvert Replacement	Detailed Design & Construction
003001 - Inverhouse Drive Over Sheridan Creek	Structure Investigation	Study
011001P - Pedestrian Overpass Over Southdown Road	Structure Investigation	Study
009003 - Indian Road Over Lornewood Creek	Structure Investigation	Study

Active Transportation Structures

Active transportation structures typically include bridges or tunnels across major barriers such as highways, railways and rivers. New crossing priorities have been identified in the Cycling Master Plan. There is one active transportation structure project underway in Ward 2 this year.

Project Name	Project Type	Project Phase / Status
Active Transportation Crossing over the Credit River at the QEW *	New bridge and adjoining trails	Construction substantially complete – expect public opening in 2026 **

* Indicates projects that are carried over from previous years.

** Project being undertaken by the Ministry of Transportation on behalf of the City of Mississauga.

Cycling Infrastructure Improvements

Mississauga's Cycling Master Plan is being updated to identify priorities for cycling infrastructure improvements in the city. Examples of cycling infrastructure include protected bike lanes, cycle tracks and multi-use trails within the road right-of-way. Three cycling infrastructure improvement projects are planned in Ward 2 for 2026.

Street Name	From	To	Facility Type	Phase / Status
Fifth Line West	Dundas Street West	Sheridan Park Drive	Bike Lanes (enhancements)	Implementation in 2026
Southdown Road*	South of Truscott Drive	South Sheridan Way	MUT and Cross-rides	Design/Construction
Truscott Drive*	Thetford Court	Barsuda Drive	Cycle Tracks and Bike Lanes	Design underway

* Project to be included with planned Southdown Road pavement rehabilitation project in 2026.

Multi-Use Trail Rehabilitation

The City's Multi-Use Trail Rehabilitation program is focused on renewing existing multi-use trails within the road right-of-way based on condition and in coordination with other projects in the area. Multi-use trail renewal work can range from resurfacing to full reconstruction. No multi-use trail renewal projects are planned in Ward 2 this year.

New Sidewalk Program

Mississauga's Pedestrian Master Plan has identified the needs, locations and priorities for pedestrian infrastructure improvements in the city. Projects in the annual Sidewalk Infill Program focus on filling in gaps in the network to improve safety, accessibility and connectivity for pedestrians. No sidewalk infill projects are planned in Ward 2 this year.

Noise Wall Replacements and Upgrades

Candidates for the Noise Wall Replacement program have been assessed based upon their existing condition, safety considerations, construction schedules and installation criteria. Noise walls scheduled for replacement are those in poor condition and which meet the installation criteria set out in Policy 09-03-03. No noise wall replacement projects are planned in Ward 2 this year.

The upgrading of privacy fences to noise walls can be done in coordination with a major road or integrated road project or as a standalone improvement project, provided that the proposed noise wall meets the installation criteria set out in Policy 09-03-03. No noise wall upgrade projects are planned in Ward 2 this year.

Intersection Improvements

The Intersection Improvement Program focuses on geometric changes to improve safety, traffic flow and capacity, such as additional turning or through lanes, typically in conjunction with traffic signal improvements for vehicles, pedestrians and/or cyclists. There are three intersection improvement projects planned in Ward 2 this year.

Project Name	Project Phase / Phase
Lakeshore Road and Clarkson Road South Improvements	Detailed Design
Lakeshore Road and Clarkson Road North Improvements	Detailed Design
Southdown Road & Lushes Avenue	Detailed Design

Rapid Transit Projects

Mississauga's Strategic Plan identifies the need to build higher order (rapid) transit corridors in the city. Rapid transit corridors typically include new dedicated transit lanes, multi-modal integration, and cycling infrastructure. The City's current rapid transit program includes several major projects. These include the Hazel McCallion Line (HML) Light Rail Transit (LRT) project and the Hazel McCallion Line (HML) Loop Extension, both led by Metrolinx. The program also includes the City-led Lakeshore Bus Rapid Transit (BRT) Corridor and Dundas East Bus Rapid Transit (BRT) Corridor projects, as well as the Downtown Mobility Hub and Transitway Connection initiative. In addition, the program encompasses the Eglinton Crosstown West Extension (ECWE) and GO Expansion projects, both of which are being delivered by Metrolinx with City stakeholder involvement.

The Hazel McCallion Line (HML) LRT is currently well under construction, with a targeted completion date to be confirmed by Metrolinx. Pre-planning activities for the implementation of the Hazel McCallion Line (HML) Loop Extension have also commenced.

Funding for both the Lakeshore Bus Rapid Transit (BRT) Corridor and Dundas East BRT Corridor projects has been approved through the Investing in Canada Infrastructure Program (ICIP). Construction schedules for these projects are currently being developed.

The Downtown Mobility Hub and Transitway Connection initiative has secured funding to undertake the required environmental assessment and preliminary design studies, which are currently underway.

None of the current rapid transit projects fall within Ward 2.

Road Safety Projects

Road Safety Projects include the installation of Pedestrian Crossovers (PXO) and Traffic Calming measures. The installation of traffic calming measures requires the assessment of city roadways for traffic safety issues and the potential installation of physical measures, such as speed cushions, split speed humps and raised pedestrian crossings. These projects often require public consultation prior to project approval. Project updates on all traffic calming projects can be found on the City's [website](#). There is one Road Safety project planned for Ward 2 this year.

Street / Location	Project Type	Status
Fifth Line West	Traffic Calming	Construction Scheduled

Street Light Replacements

The Street Light Replacement Program addresses old streetlighting infrastructure that is in critical condition and in need of replacement. The program includes the replacement of Erindale style streetlight poles. The Erindale style poles, which only exist in Wards 8, 9 and 11, are made of steel and buried directly in the ground. The metal poles deteriorate because of their exposure to salt and other ground minerals. No streetlight pole replacement projects are planned for Ward 2 this year.

Traffic Signal Installations

The need for the installation of a new traffic control signal is determined when signal warrant criteria are satisfied, when traffic conditions have changed significantly rendering the existing form of traffic control inefficient, and/or when imminent adjacent development indicates that signalization will be required. There is no new Traffic Signal Installation project planned in Ward 2 this year.

Traffic Signal Modernization

Existing traffic signals are modernized when the age of traffic signal equipment and the anticipated increased maintenance indicate that upgrades and/or replacements of the existing traffic signal infrastructure are required. There is one new Traffic Signal Modernization project planned in Ward 2 this year.

Project Name	Location
*2025 Supply Install Modernize Program - Rebuild	Truscott Drive at Lewisham Drive

Environmental Site Management

This program includes conducting environmental studies, site inspections, monitoring programs and remediation of contamination in soil and/or groundwater on City-owned lands, including road allowances, easements, parks, hazard lands and municipal facilities. The primary objectives of work conducted under this capital program are to ensure that the City-owned lands are safe for the intended uses, limit the liability of the Corporation, and are not causing negative impacts to the natural environment. There are two environmental site management projects planned for Ward 2 this year.

Project Location	Project Type (Phase)
Birchwood Park (1547 Lakeshore Road West)*	Annual Groundwater Sampling and Cap Inspection (Study)*
Avonhead Creek adjacent to 2500 Royal Windsor Drive*	Annual Erosion Inspection (Study)*

* Project carried over from previous year.

The program for Birchwood Park involves a site inspection and the collection of groundwater samples from previously installed wells. It is not anticipated that such activities would cause any noise or other nuisances.

Stormwater Projects

The Stormwater Capital Plan includes watercourse improvements, storm sewer and drainage improvements, stormwater management facilities and improvements, stormwater studies and stormwater low impact development (LID) enhancements within the road right-of-way. Projects are identified by our stormwater monitoring, evaluation and maintenance programs as well as recommendations from various studies. Projects are prioritized based on citywide needs and asset management strategies and are coordinated with other City projects, the Region of Peel, utility companies and development pressures to the extent possible and practical.

Watercourse Improvements

Projects in the Watercourse Improvements program primarily focus on the stabilization and rehabilitation of watercourses across the city to mitigate erosion hazards and protect property, infrastructure and public safety. The design and implementation of these projects are typically preceded by the completion of a Class Environmental Assessment (EA). There are two watercourse improvement projects planned for Ward 2 this year.

Project Location	Project Type (Phase)
SHER-0300: Sheridan Creek – Rail Line to Clarkson Road South*	Erosion Control (Construction)*
SHER-0300: Sheridan Creek – Lushes Ave to Rail Line*	Erosion Control (Design)*

* Project carried over from previous year.

Storm Sewer & Drainage Improvements

The City's storm sewer network collects, conveys and discharges stormwater runoff. The system is comprised of linear assets such as pipes and point assets such as maintenance holes and catch basins. Projects in this program include assessment, design and implementation to maintain and renew the storm sewer network. There are three storm sewer projects planned in Ward 2 this year.

Project Location	Project Type (Phase)
Adjacent to 1550 Southdown Road**	Storm Sewer Repair (Construction)**
Adjacent to 1520 Watersedge Road**	Storm Sewer Repair (Construction)**
Adjacent to 2100 Lakeshore Road West**	Storm Sewer Repair (Construction)**

* Project carried over from previous year.

** This project is not reflected on the Road and Stormwater Capital Plan Map.

Stormwater Management Facilities & Improvements

Projects in this program include the design and implementation of new Stormwater Management (SWM) facilities and retrofit of existing facilities for additional flood relief and water quality. Typical improvements include dredging and rehabilitation works to maintain infrastructure as well as water quality and quantity function. There is one stormwater management facility projects planned for Ward 2 this year.

Project Location	Project Type (Phase)
SWMF 0901: Southwest of Mississauga Road and Indian Road*	Pond Dredging and Rehabilitation (Design)*

* Project carried over from previous year.

Stormwater Studies

This includes the completion of flood evaluation studies, erosion control studies, master drainage plans and other planning studies. Planning and asset management studies allow staff to prioritize capital projects and improve the organization and management of stormwater infrastructure assets. Flood evaluation studies aid in the identification of infrastructure needs and the recommendation of future capital projects. There are two stormwater study planned for Ward 2 this year.

Project Location	Project Type (Phase)
Various Locations – Wards 2, 3, 5, 6, 7, 8, 9, 10, 11*/**	Storm Pond Sediment Survey (Study)*/**
Full City **	Storm Sewershed Delineation in Support of CLI-ECA Requirements (Study)**

* Project carried over from previous year.

** This project is not reflected on the Road and Stormwater Capital Plan Map.

Stormwater LID Enhancements

The Stormwater Program also includes funding for Low Impact Development (LID) enhancements to be constructed within the road right-of-way where opportunities arise. Common LID techniques include enhanced vegetated swales and bio-retention features that promote infiltration and/or filtration. No LID projects are planned in Ward 2 this year.

Roads and Stormwater Infrastructure Communications Strategy

In partnership with the Strategic Communications Team, the Roads and Stormwater service areas are committed to improving and simplifying communications for infrastructure construction projects. This work includes developing consistent messaging for construction notice letters, improving construction project signage, clarifying communication channels and processes, and increasing public engagement through surveys and additional touch points with notice letters.

The City is planning communications to ensure residents, businesses and commuters are aware of the 2026 construction season and where to find information on construction projects. For information about planned construction works within the city, please visit the '[Construction Map](#)' on the City's website.

The Field Ambassador Program, introduced in 2021, will continue in 2026 to improve how the City communicates with residents and businesses about construction projects taking place in their neighbourhoods. The Field Ambassador will have a presence at the construction sites, particularly on our Road Rehabilitation projects, and will be available for residents and businesses by phone or email to ask questions, share their feedback and get more information on the project.

Closing

If you have any questions regarding the Road Safety, Traffic Signal or Streetlighting projects within your ward, please contact Colin Patterson, Director, Traffic Management and Municipal Parking, at extension 5145.

If you have any questions regarding the Rapid Transit projects within your ward, please contact Carolyn Ryall, Director, Rapid Transit Program Office, at extension 5125.

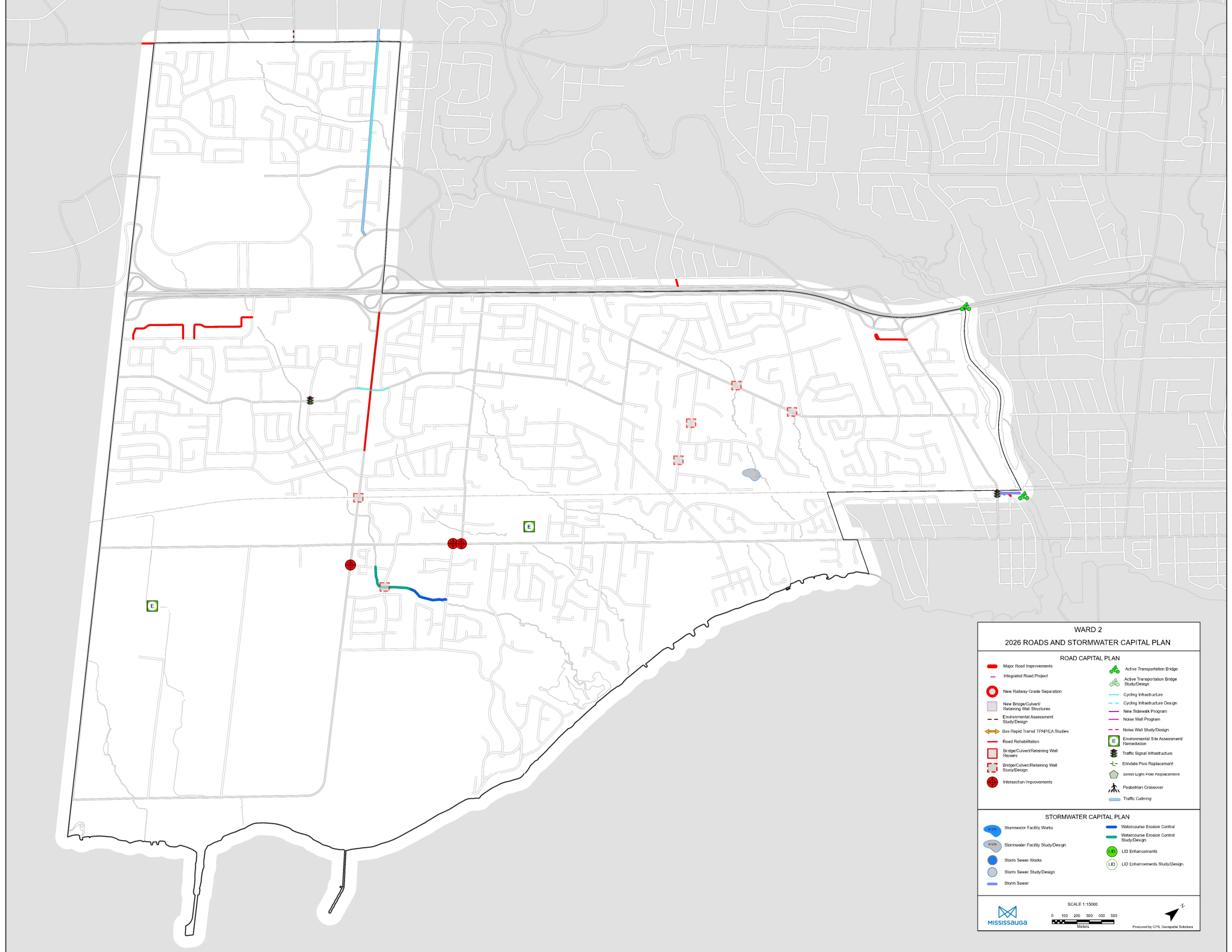
If you have any questions regarding any of the remaining Road and Stormwater projects, please contact Emma Calvert, Director, Infrastructure Planning and Engineering Services, at extension 4343.

Copies circulated to:

Sam Rogers, Commissioner of Transportation and Works

Attachment:

2026 - Ward 2 Roads and Stormwater Capital Plan Map



WARD 2
2026 ROADS AND STORMWATER CAPITAL PLAN

ROAD CAPITAL PLAN

Major Road Improvements	Active Transportation Bridge Study/Design
Integrated Road Project	Active Transportation Bridge Study/Design
New Railway Grade Separation	Cycling Infrastructure
New Bridge/Culvert Retaining Wall Structures	Cycling Infrastructure Design
Environmental Assessment Study/Design	New Sidewalk Program
Environmental Assessment Study/Design	Noise Wall Program
Bus Rapid Transit (TPA/EA) Studies	Noise Wall Study/Design
Road Rehabilitation	Environmental Site Assessment Remediation
Bridge/Culvert Retaining Wall Hoop Reinforcement	Traffic Signal Infrastructure
Bridge/Culvert Retaining Wall Study/Design	Traffic Signal Replacement
Intersection Improvements	Erosion Pin Replacement
	Green Light Pole Replacement
	Pedestrian Crossover
	Traffic Calming

STORMWATER CAPITAL PLAN

Stormwater Facility Works	Watercourse Erosion Control
Stormwater Facility Study/Design	Watercourse Erosion Control Study/Design
Storm Sewer Works	LID Enhancements
Storm Sewer Study/Design	LID Enhancements Study/Design
Storm Sewer	

SCALE: 1:15000
0 100 200 300 400 500 Meters

MISSISSAUGA Produced by GIS Geomatics Solutions