

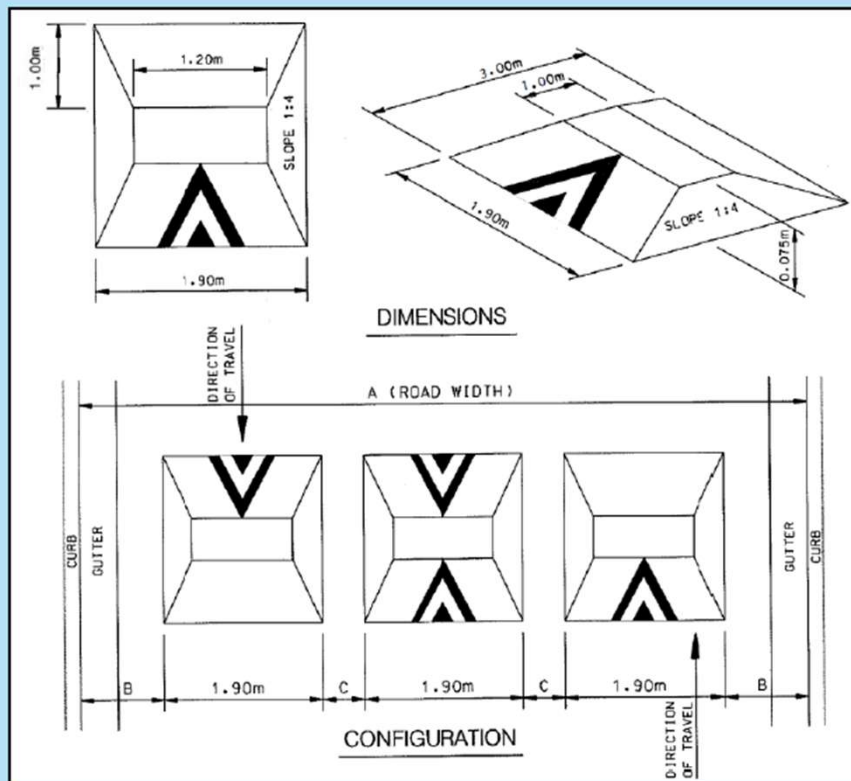
WARD 2 – TRAFFIC CALMING

Clarkson Road North

TRAFFIC CALMING DEVICES



SPEED CUSHION DESIGN

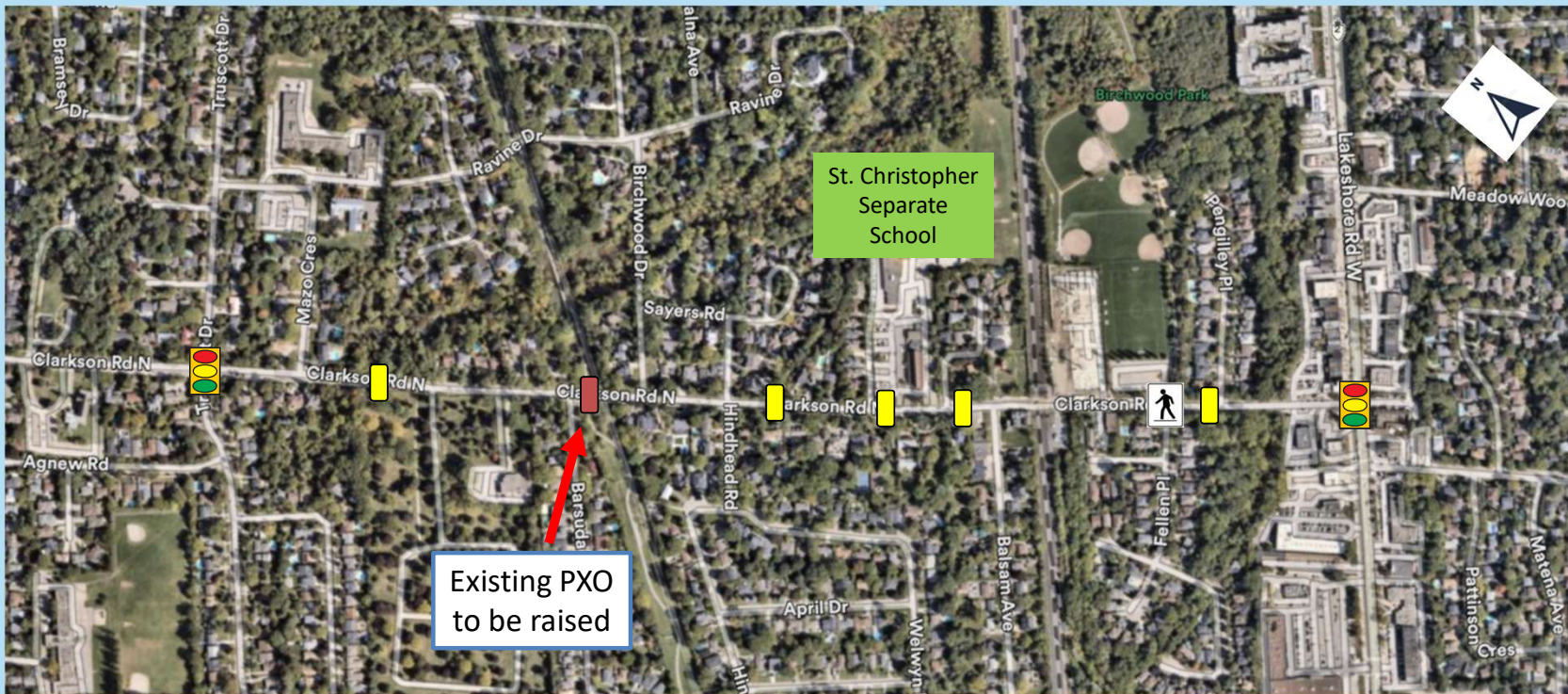


- Raised area on a roadway that does not cover the entire width of the road
- Designed to accommodate wide wheel base of emergency vehicles (easy passage)
- Designed to discourage drivers from travelling at excessive speeds
- A series of speed cushions is more effective than a single installation
- Use on neighbourhood roads

Raised Pedestrian Crossover (PXO)



Clarkson Road North



- Existing location of an All-Way Stop



- Existing signalized intersection



- Proposed Traffic Calming Device



- Raised Crosswalk & PXO



- Proposed PXO