

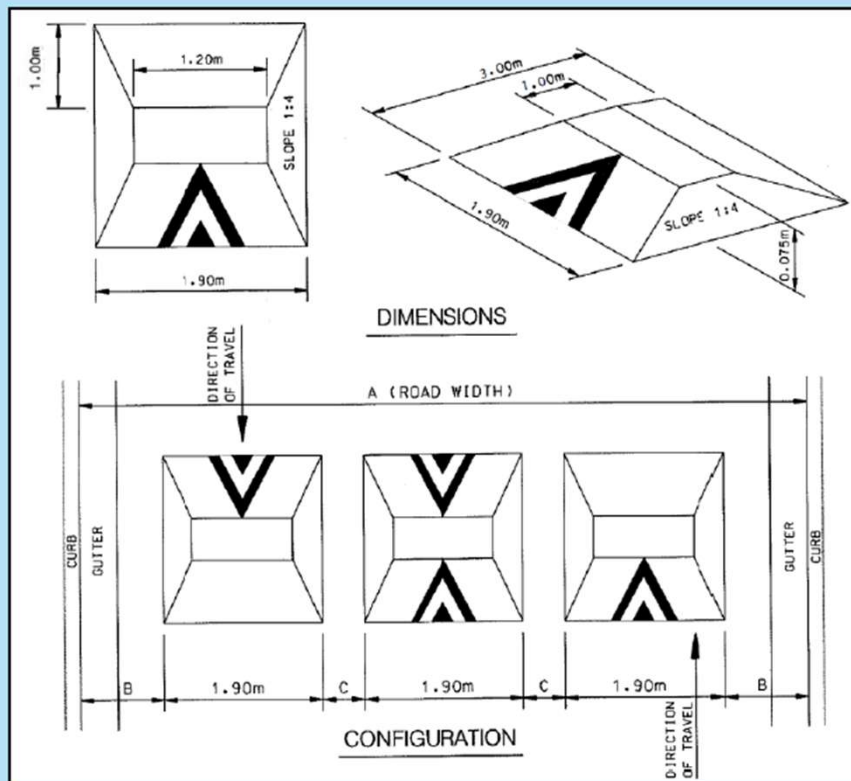
WARD 3 – TRAFFIC CALMING

Ponytrail Drive

TRAFFIC CALMING DEVICES



SPEED CUSHION DESIGN

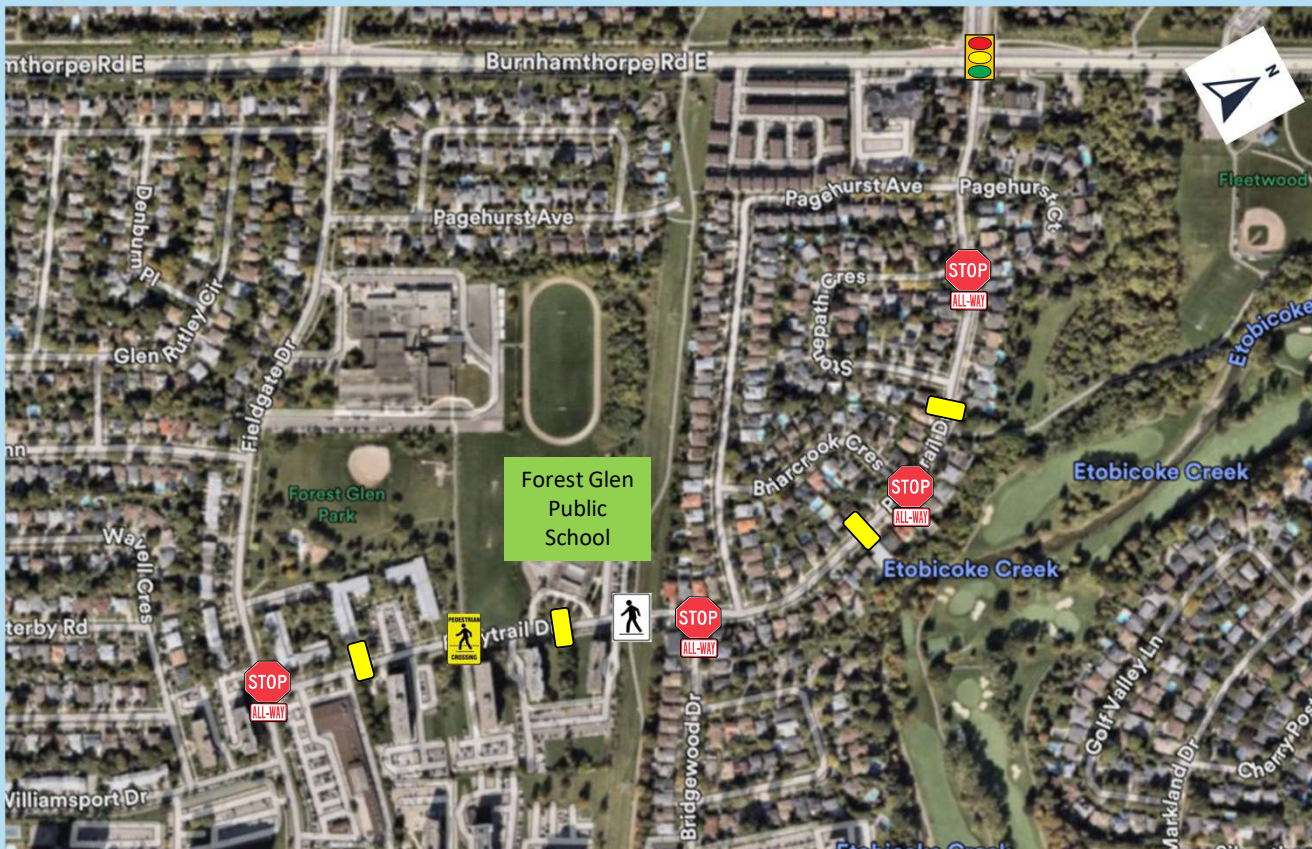







- Raised area on a roadway that does not cover the entire width of the road
- Designed to accommodate wide wheel base of emergency vehicles (easy passage)
- Designed to discourage drivers from travelling at excessive speeds
- A series of speed cushions is more effective than a single installation
- Use on neighbourhood roads

Pedestrian Crossover (PXO)



Ponytrail Drive



-  - Existing location of an All-Way Stop
-  - Existing signalized intersection
-  - Existing pedestrian crossover
-  - Proposed traffic calming device
-  - Proposed pedestrian crossover