

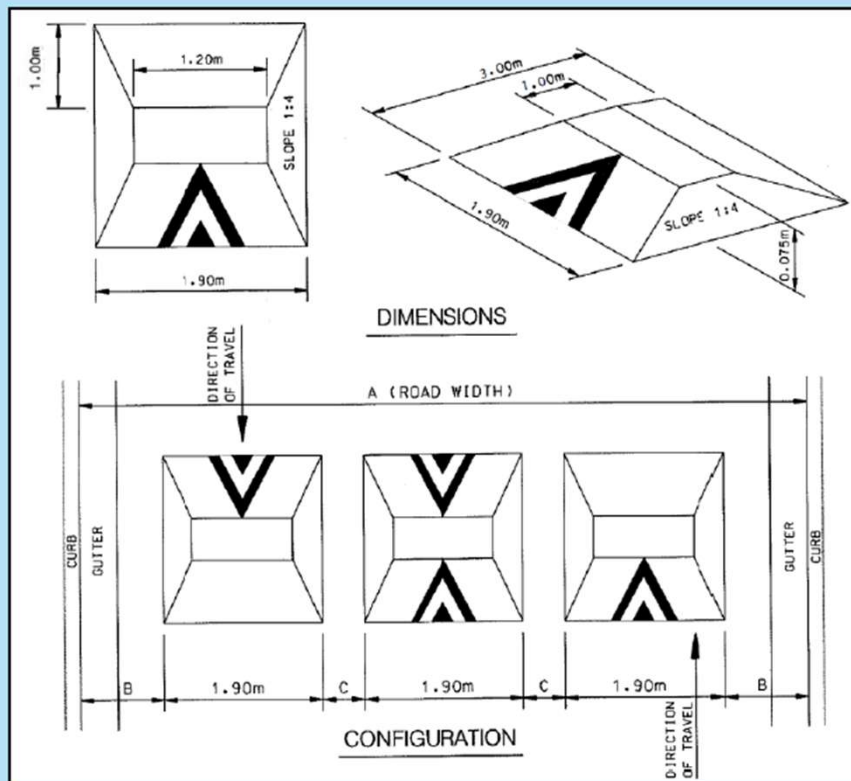
WARD 3 – TRAFFIC CALMING

Willowbank Trail

TRAFFIC CALMING DEVICES

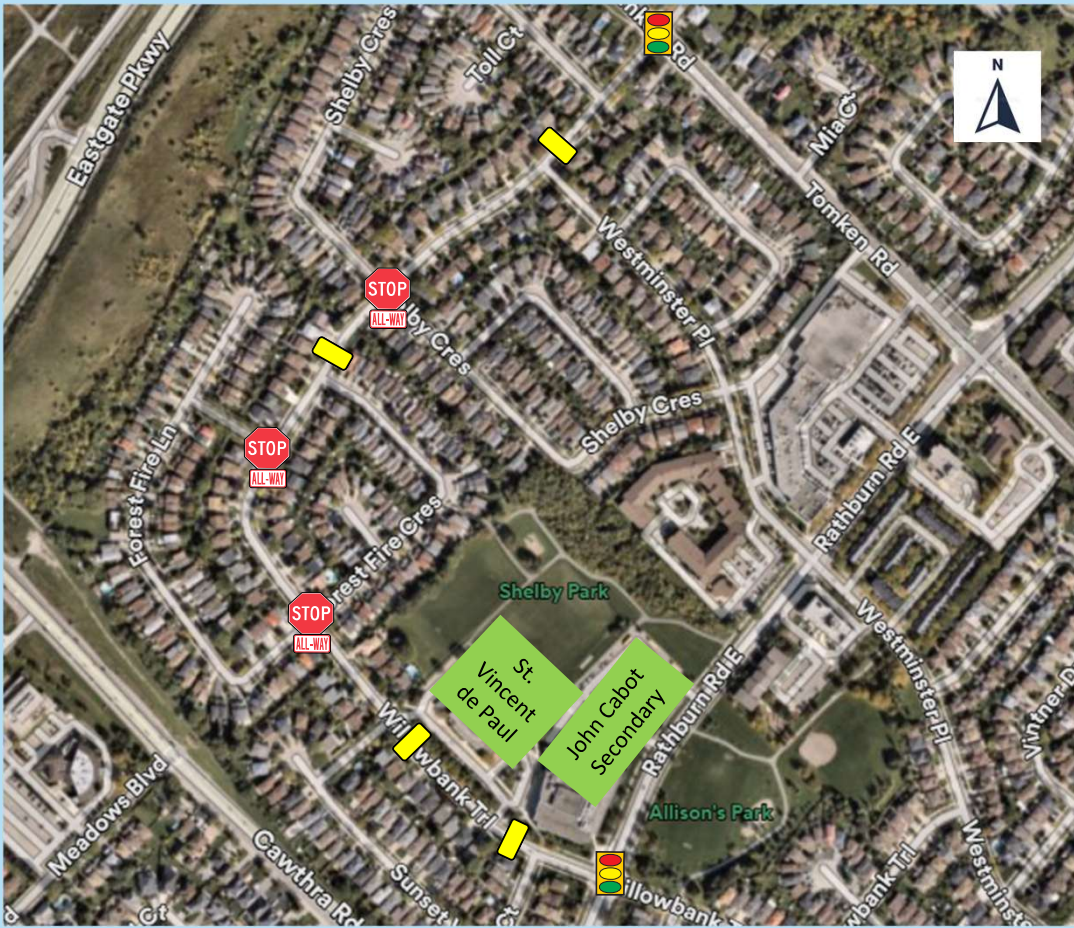





SPEED CUSHION DESIGN



- Raised area on a roadway that does not cover the entire width of the road
- Designed to accommodate wide wheel base of emergency vehicles (easy passage)
- Designed to discourage drivers from travelling at excessive speeds
- A series of speed cushions is more effective than a single installation
- Use on neighbourhood roads

Willowbank Trail



-  - Existing location of an All-Way Stop
-  - Existing signalized intersection
-  - Proposed Traffic Calming Device