

Chromebooks – External Lending Accessibility

Features

By: LIT

Thursday, July 29, 2021

Contents

Overview	3
Logging In	4
Zoom in or Magnify your Chromebook Screen	4
Docked magnifier.....	4
Full-screen magnifier	7
Use the built-in screen reader.....	10
Hear Text read aloud.....	12
Support	15
Library (LIT) LIT Support	15
External Resources	15

Overview

This document will guide you through the accessibility features that are present on the Chromebooks that are now available for external lending to customers.

The topics covered in this document include using the accessibility features:

- When Logging in
- Reading and accepting the Library's Terms of Use document
- External resources about the Chromebook's accessibility features

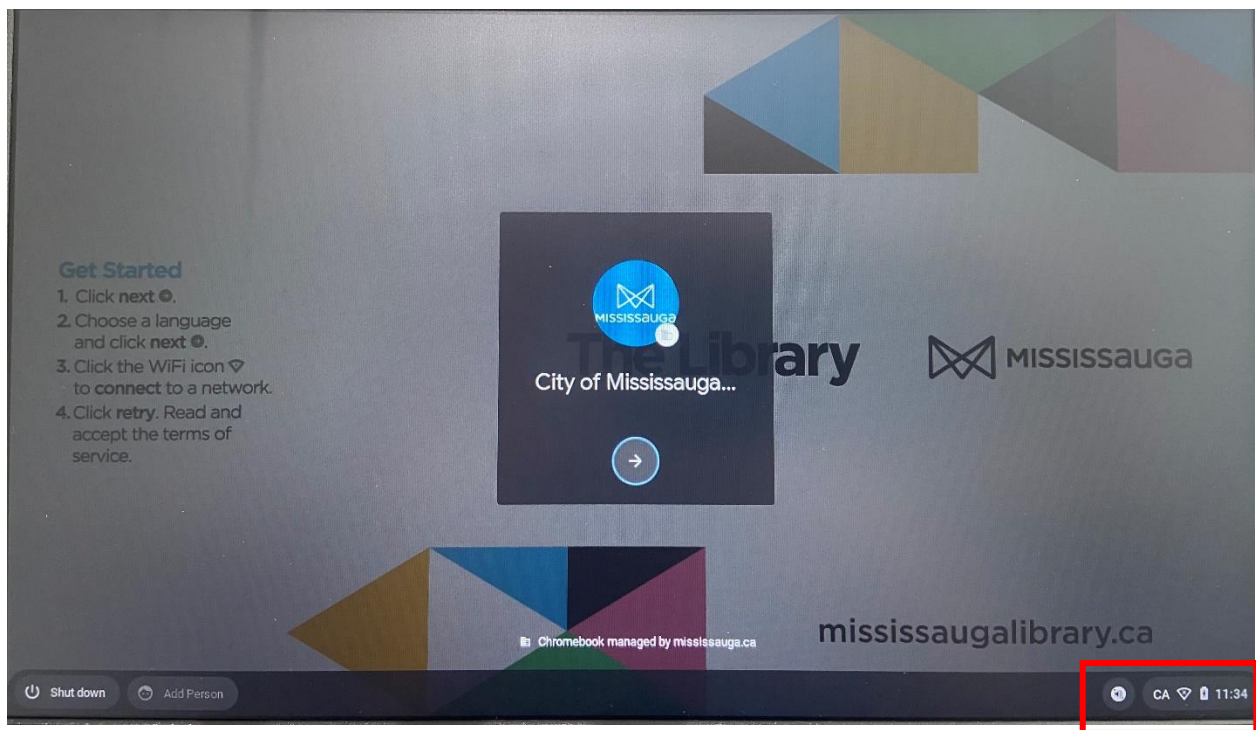
Logging In

Zoom in or Magnify your Chromebook Screen

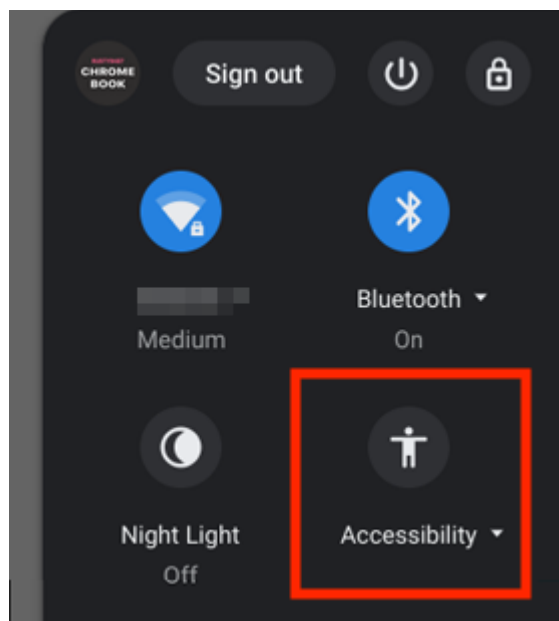
Docked magnifier

To use the Docked magnifier on the Chromebook when logging in, please follow these instructions.

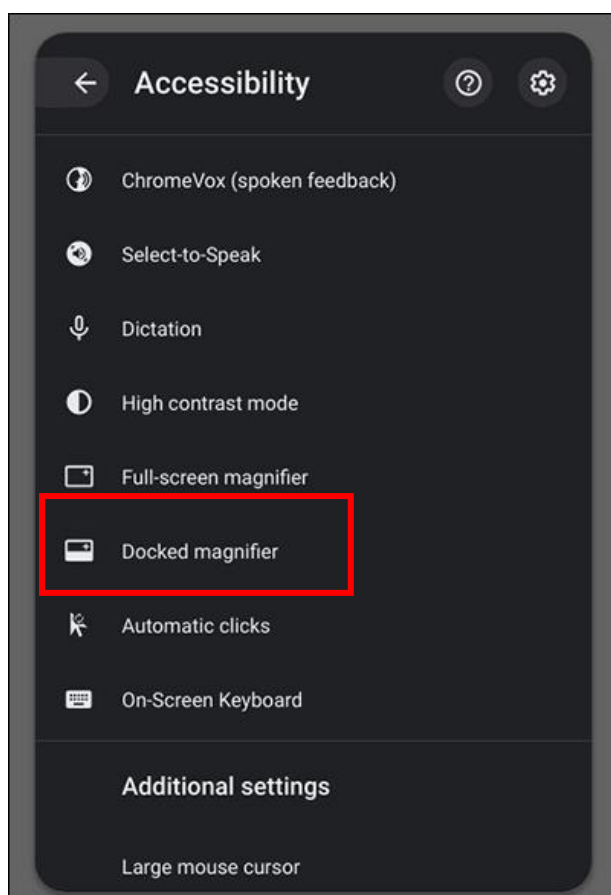
1. Turn on Chromebook by pressing the power button in the upper right hand corner of the keyboard
2. On the initial Log in page, click the **System** menu that is available in the bottom right corner of the screen



3. In the System menu, select the **Accessibility** button.

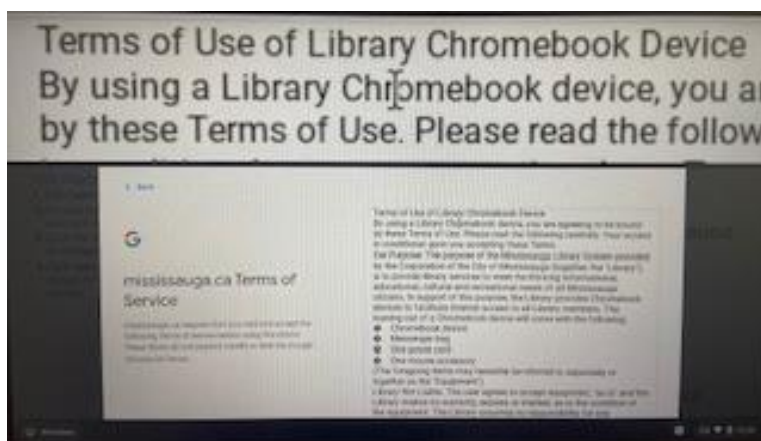
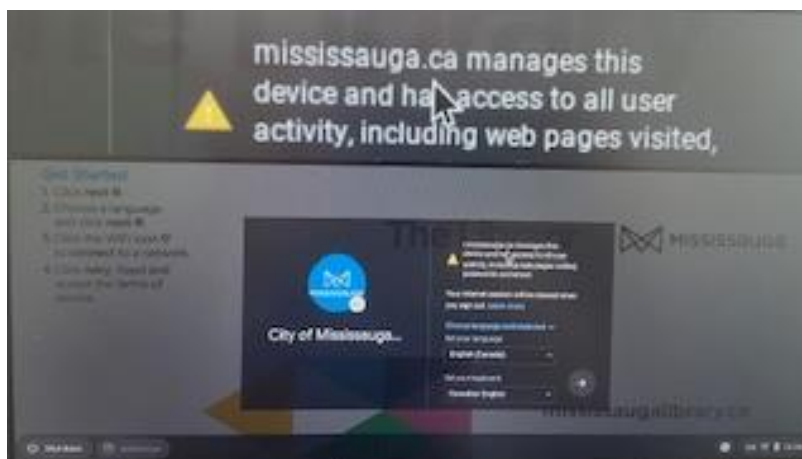
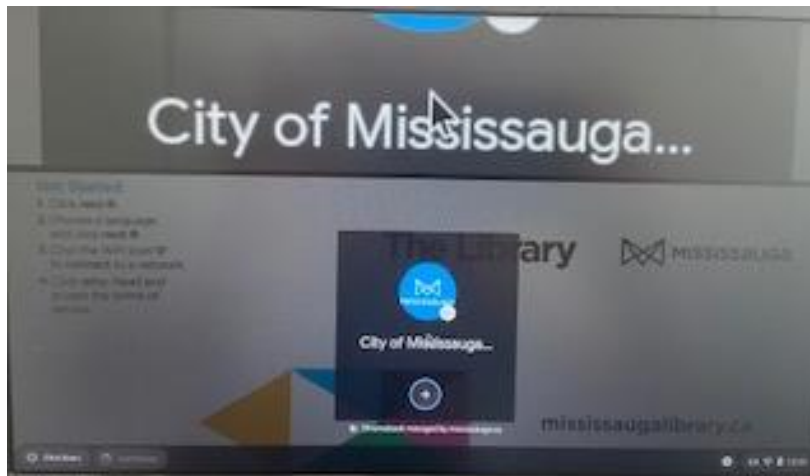


4. Select the **Docked magnifier** option



Chromebooks – External Lending

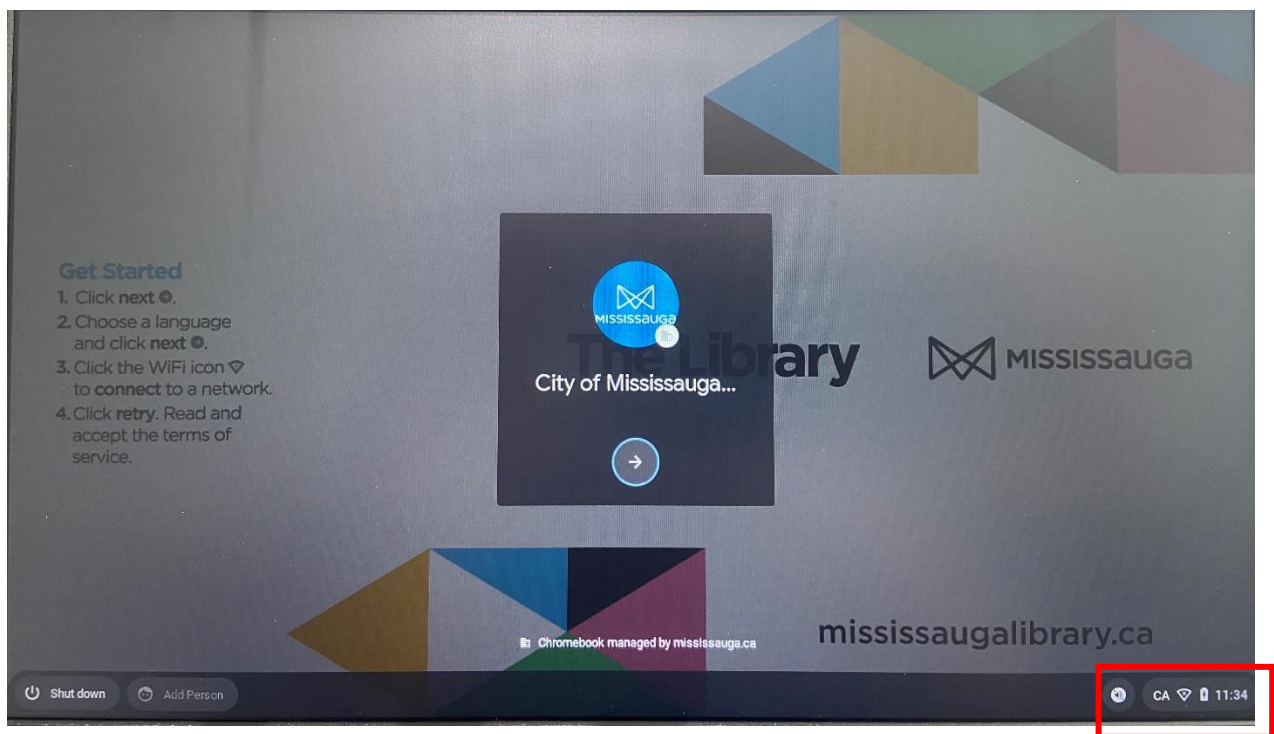
5. The user is now able to complete the Login process using the **Docked magnifier**



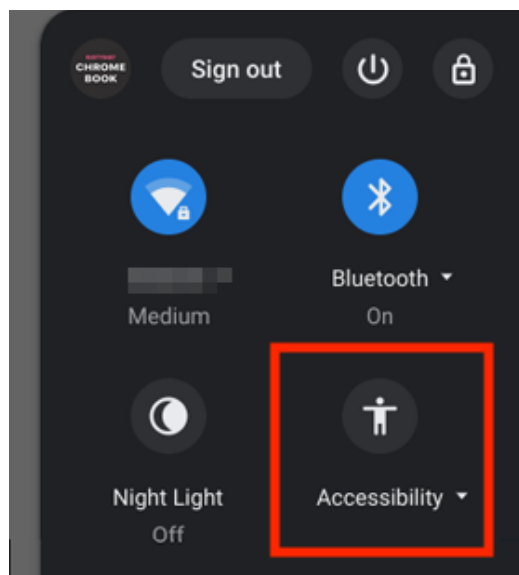
Full-screen magnifier

To use the Full-screen magnifier on the Chromebook when logging in, please follow these instructions.

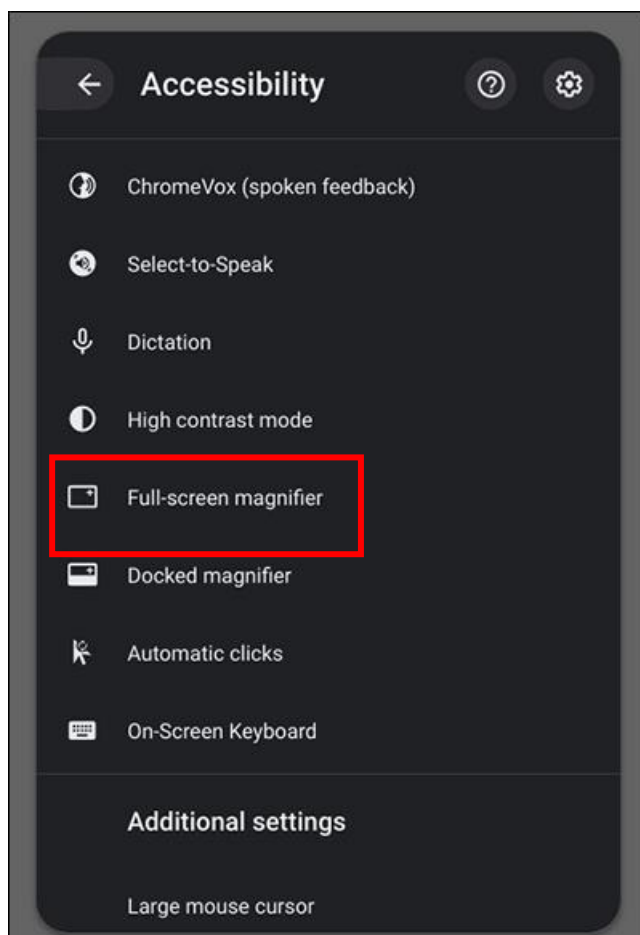
1. Turn on Chromebook by pressing the power button in the upper right hand corner of the keyboard
2. On the initial Log in page, click the **System** menu that is available in the bottom right corner of the screen



3. In the System menu, select the **Accessibility** button.



4. Select the Full-screen magnifier option

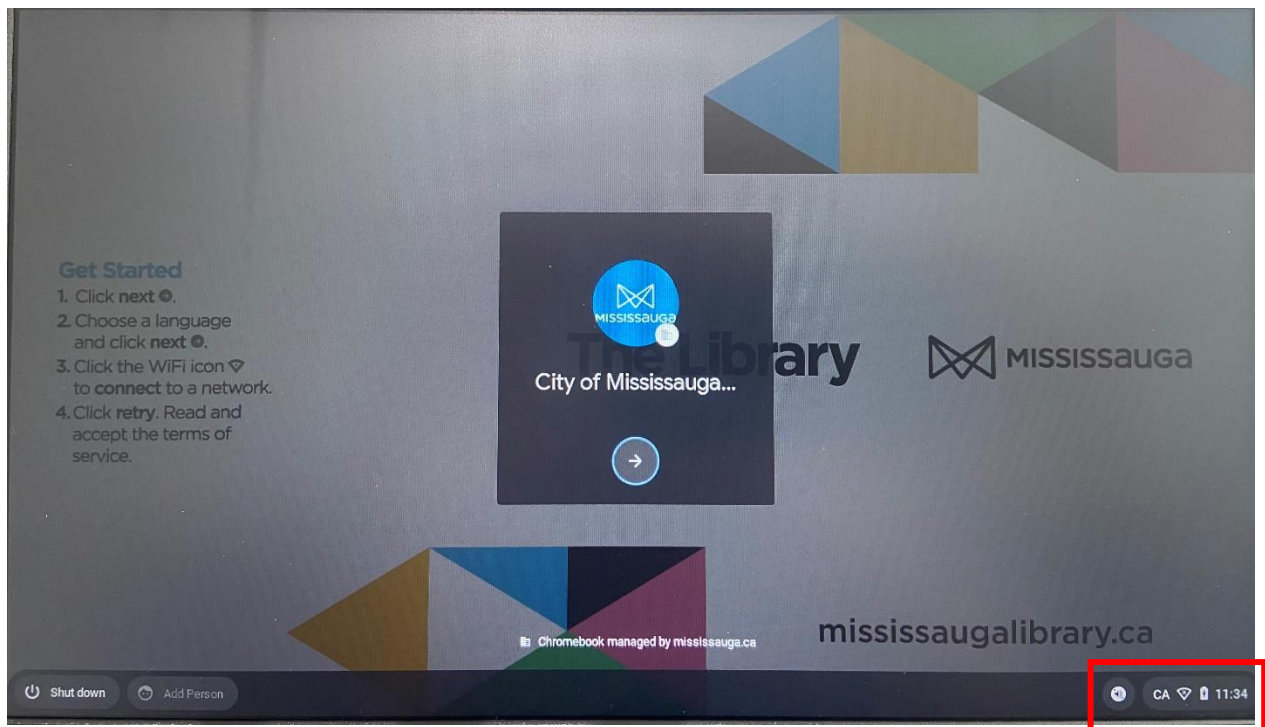


5. Repeat step five in the Logging in with the Docked Magnifier to log in to the Chromebook and Accept the Terms of Use document, using the Full-screen magnifier option

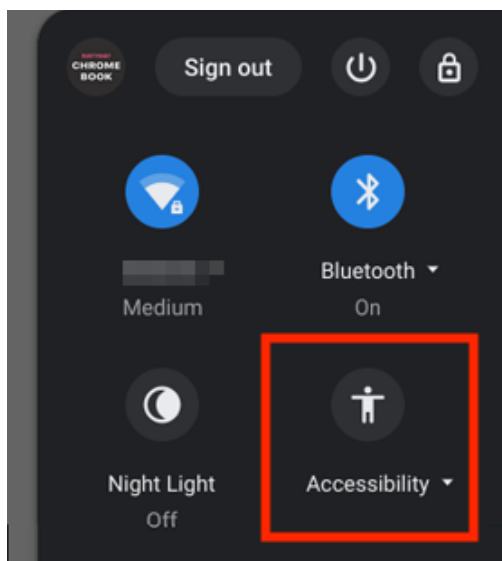
Use the built-in screen reader

To use the built-in screen reader (ChromeVox) on the Chromebook when logging in, please follow these instructions.

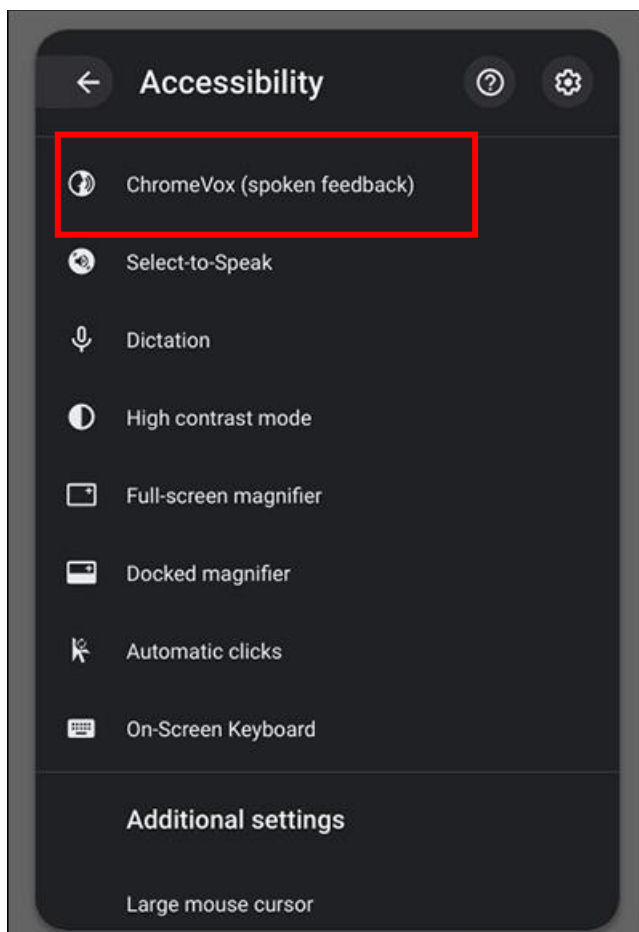
1. Turn on Chromebook by pressing the power button in the upper right hand corner of the keyboard
2. To turn on or off the screen reader from any page, press **Ctrl + Alt + Z**
3. You can also turn on the screen reader from the **Accessibility** menu that is available in the **System** menu
4. On the initial Log in page, click the **System menu** that is available in the bottom right corner of the screen



5. In the **System** menu, select the **Accessibility** button.



6. Select the ChromeVox (spoken feedback) option

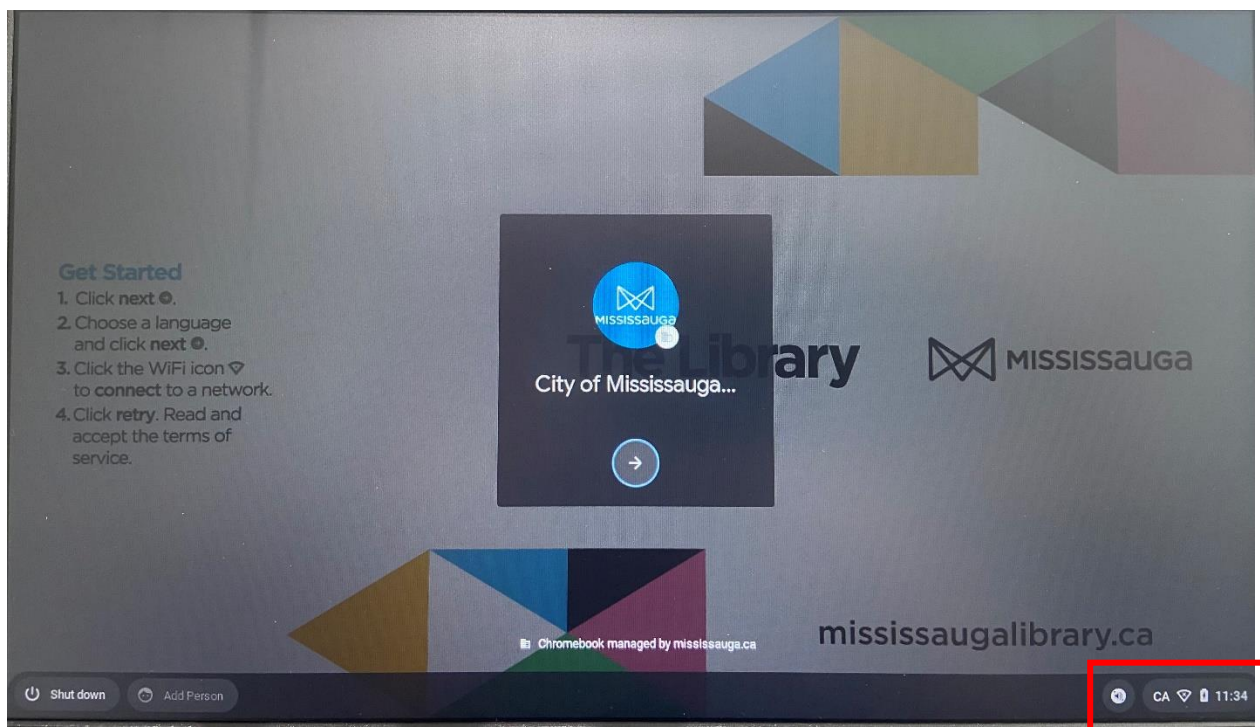


7. Continue with the regular Login process until the mississauga.ca Terms of Service page
8. On the mississauga.ca Terms of Service page, use the (🔍 + right arrow) key combination to have ChromeVox read the Terms of Use document

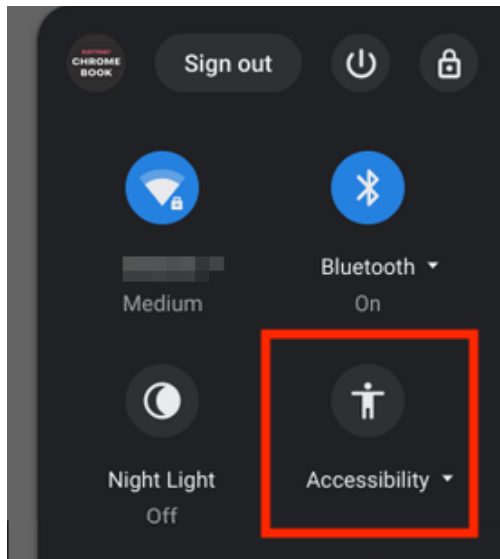
Hear Text read aloud

To use the **Select-to-Speak** option on the Chromebook to select what text the user would like to hear when logging in, please follow these instructions.

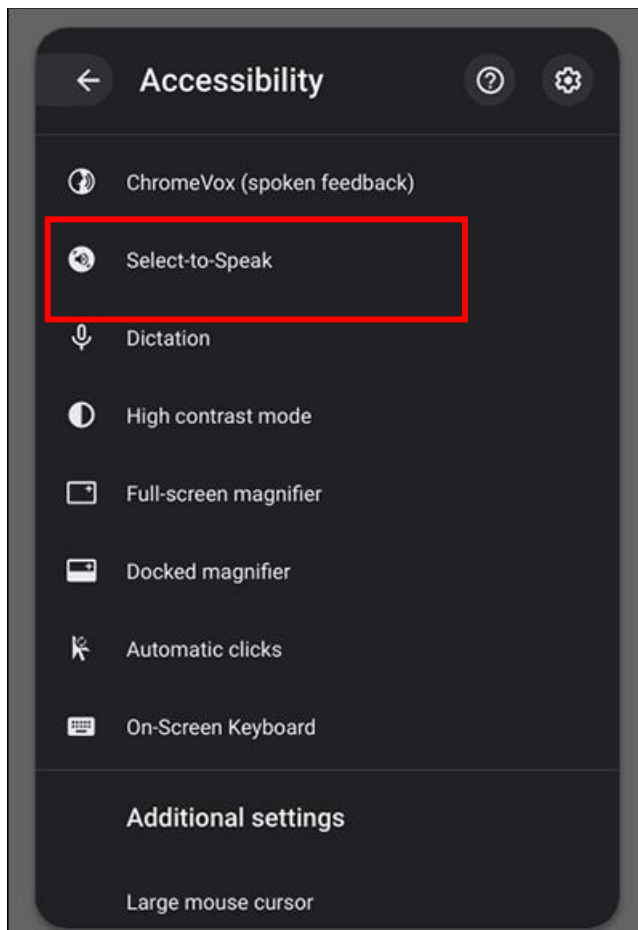
1. Turn on Chromebook by pressing the power button in the upper right hand corner of the keyboard
2. On the initial Log in page, click the **System** menu that is available in the bottom right corner of the screen







3. In the **System** menu, select the **Accessibility** button.



4. Select the **Select-to-Speak** option

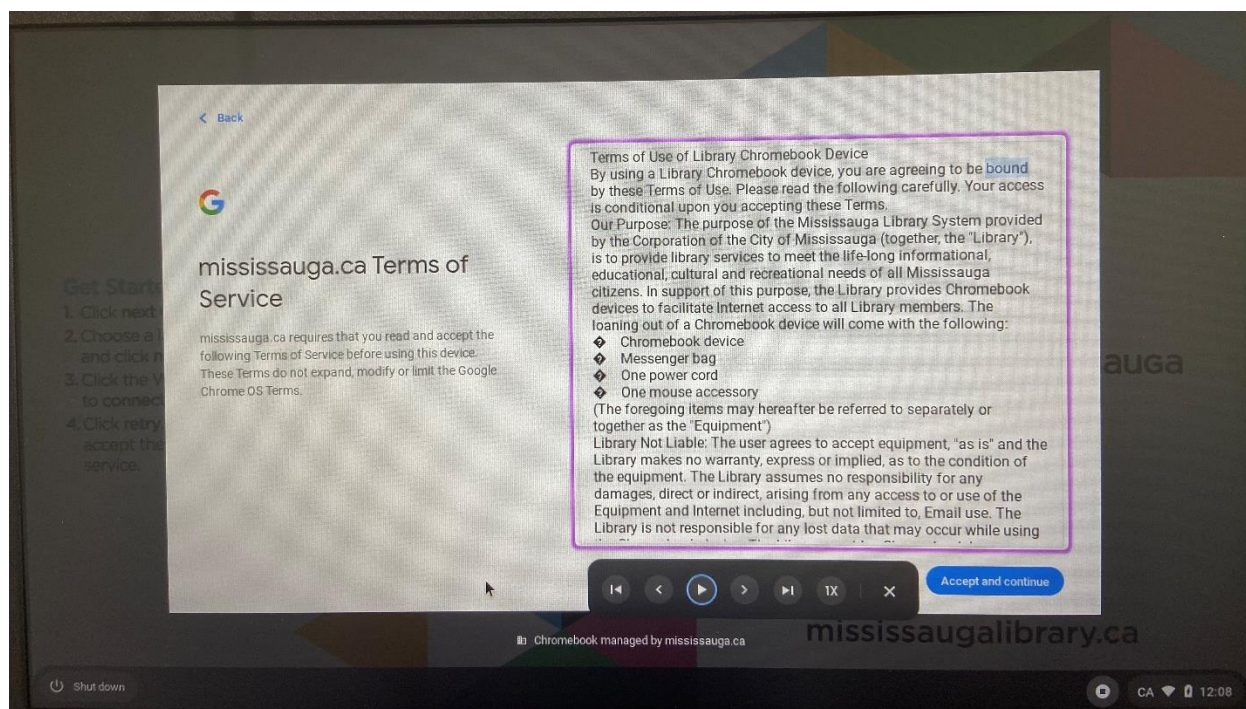


5. To select what text you'd like to hear:

- Press and hold the Search key  and select a line of text.
- Press and hold the Search key  and drag the pointer over an area of the screen.
- Highlight the text and press the Search key  + s.
- At the bottom right, near the time, select Select-to-speak .

Then select a line of text or drag the pointer over an area of the screen.

6. Continue with the regular Login process



Support

Library (LIT) LIT Support

Email:

Library.LIT@Mississauga.ca

External Resources

[Chrome Help Accessibility Features](#) (Google site)

[Chromebook Accessibility Video Series](#) (Google YouTube Channel)